





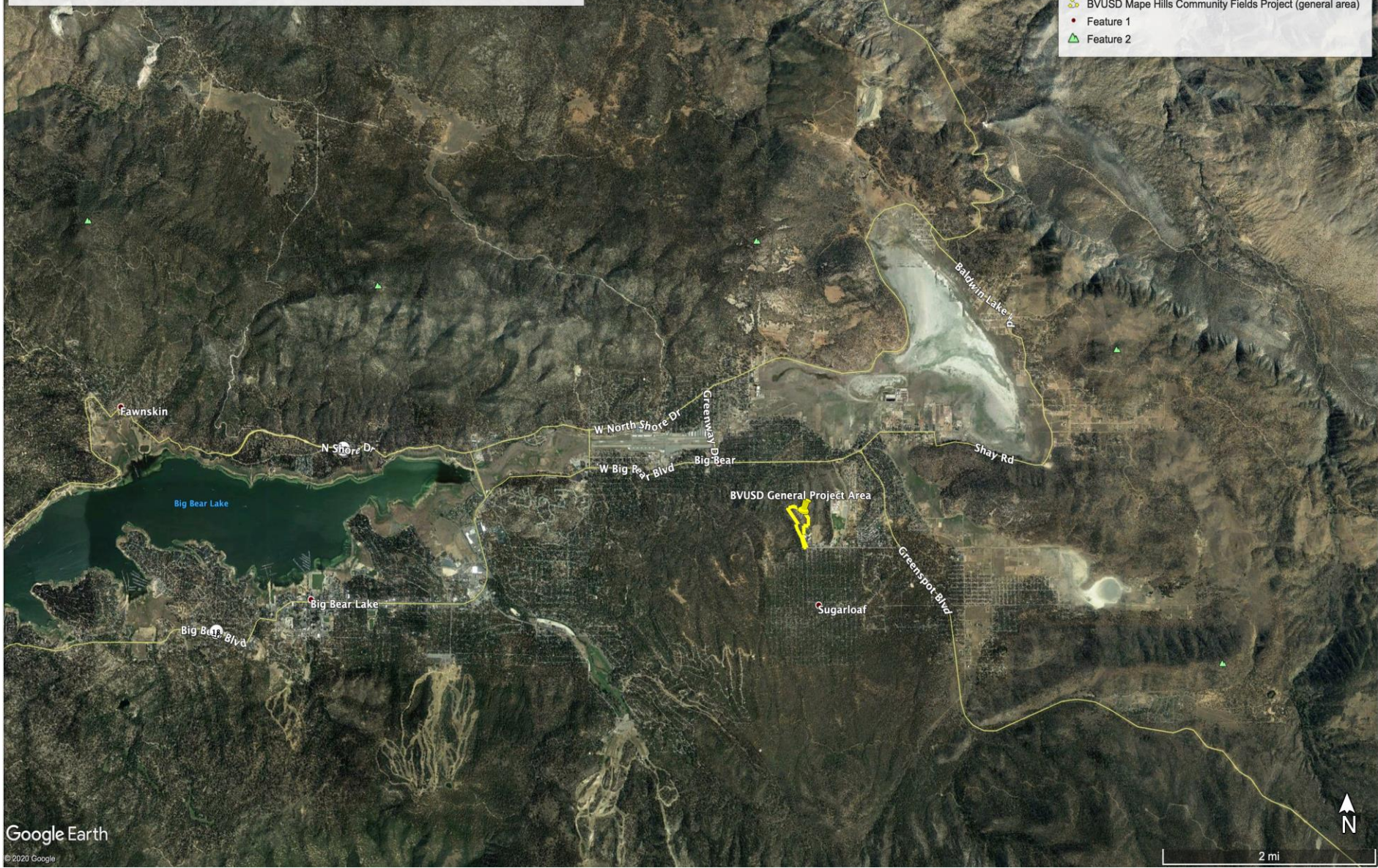
FIGURES

Bear Valley Unified School District Maple Hill Community Fields Project

Regional Map

Legend

-  BVUSD General Project Area
-  BVUSD Maple Hills Community Fields Project (general area)
-  Feature 1
-  Feature 2



Google Earth
© 2020 Google

FIGURE 1

Bear Valley Unified School District Maple Hill Community Fields Project
Site Map

- Legend**
- 44500 Baldwin Ln
 - BVUSD General Project Area
 - BVUSD Mape Hills Community Fields Project (general area)

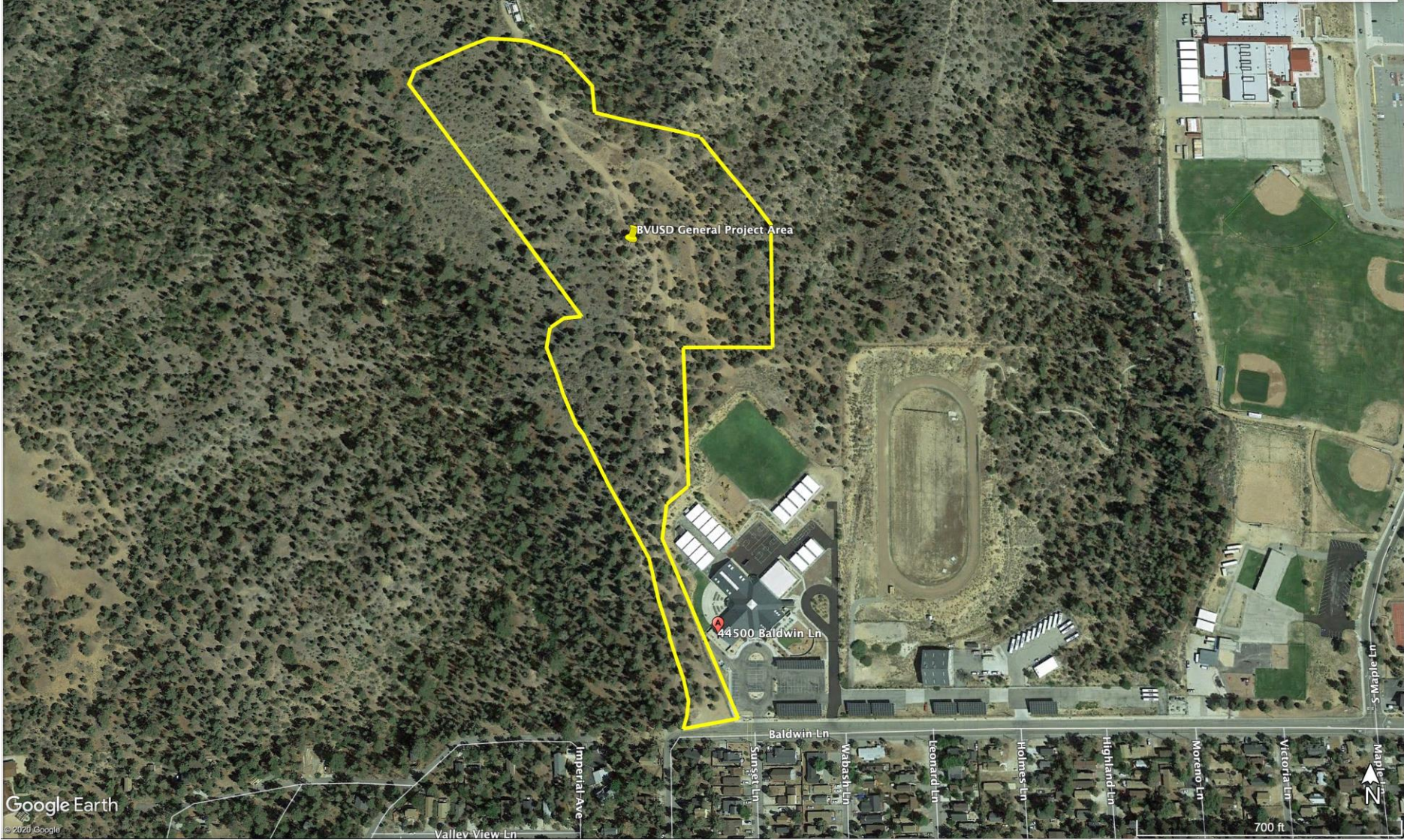


FIGURE 2

School Trails OVERVIEW

2/10/2019

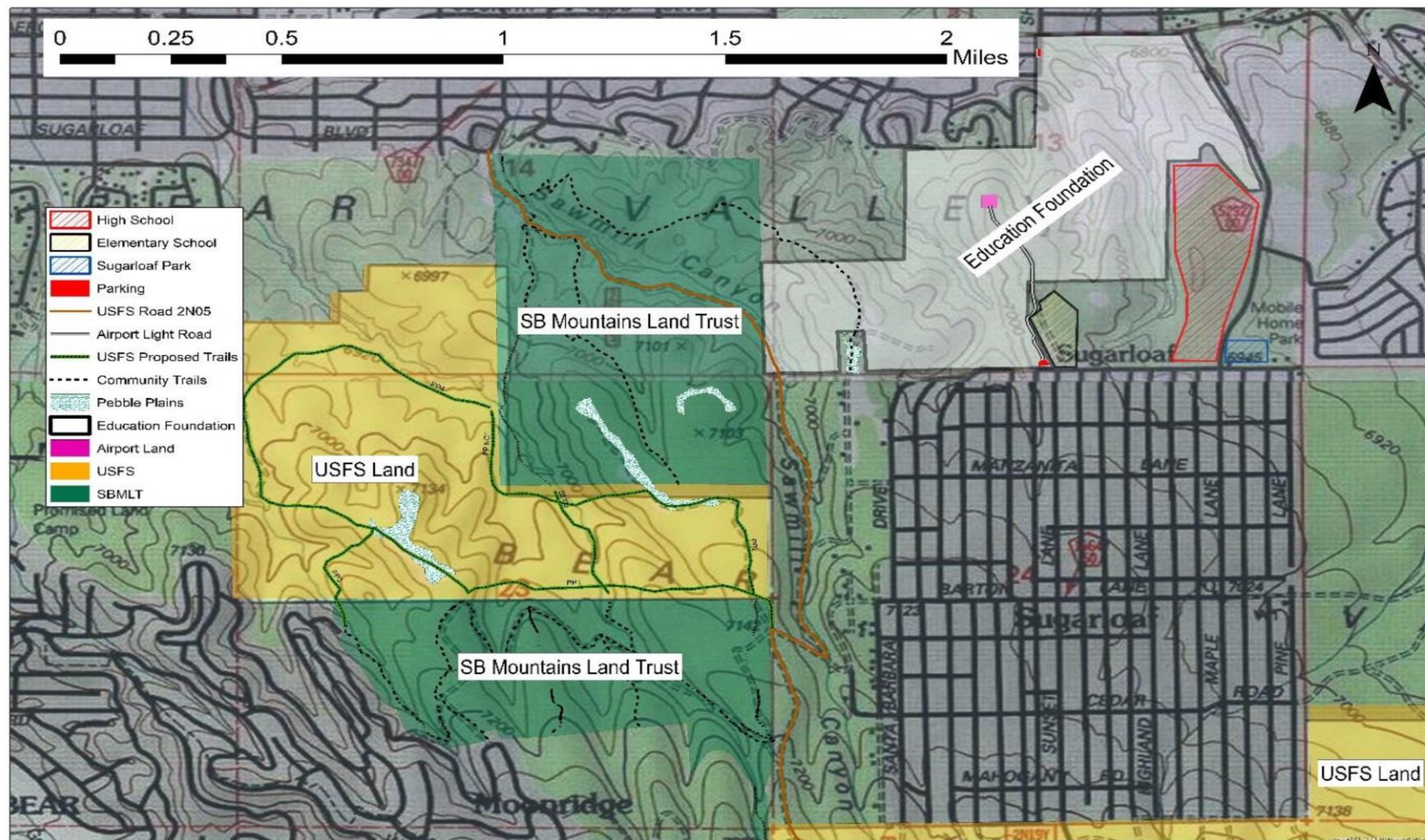
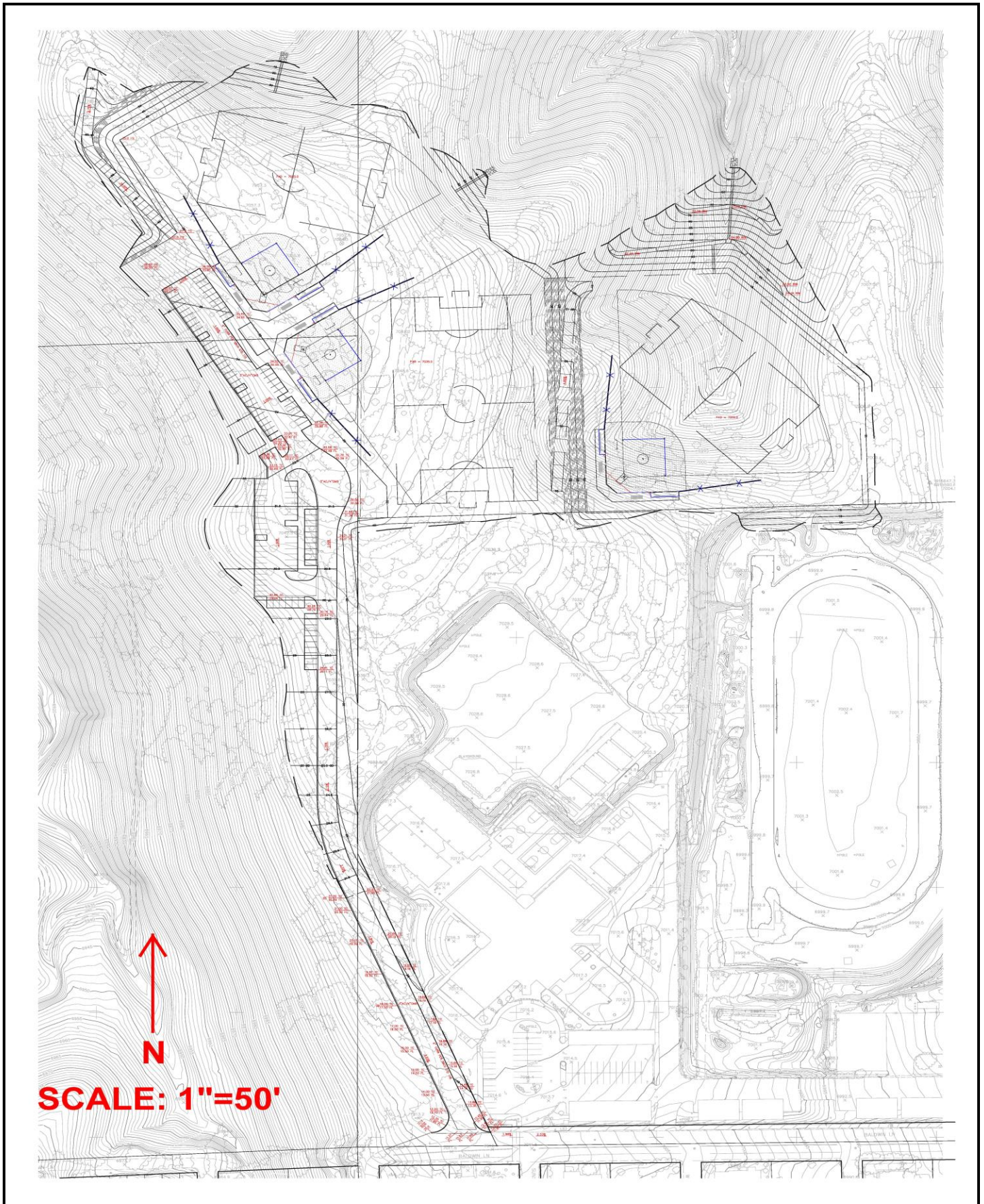


FIGURE 3



SOURCE:

FIGURE 4



FIGURE I-1

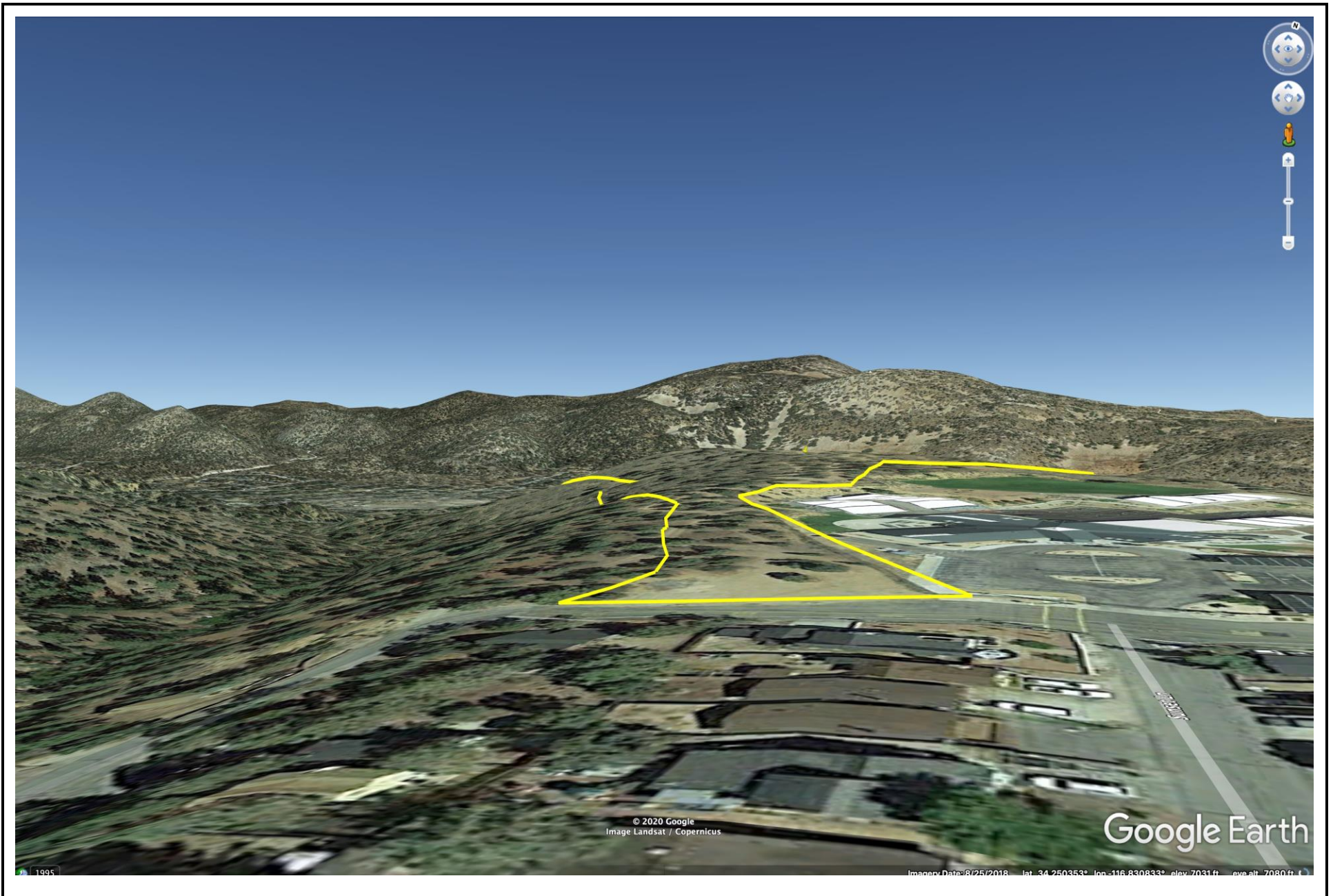


FIGURE I-2

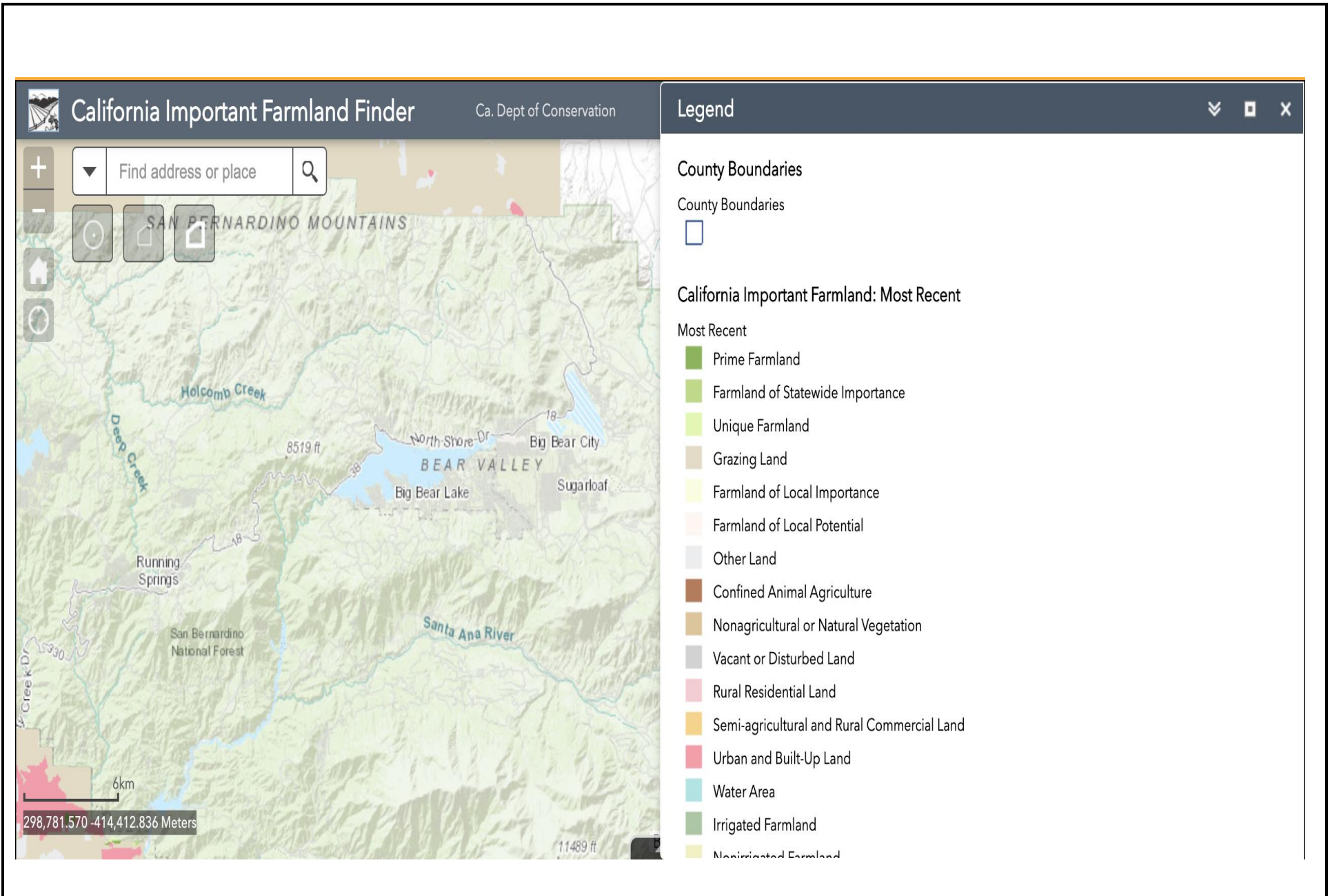


FIGURE II-1

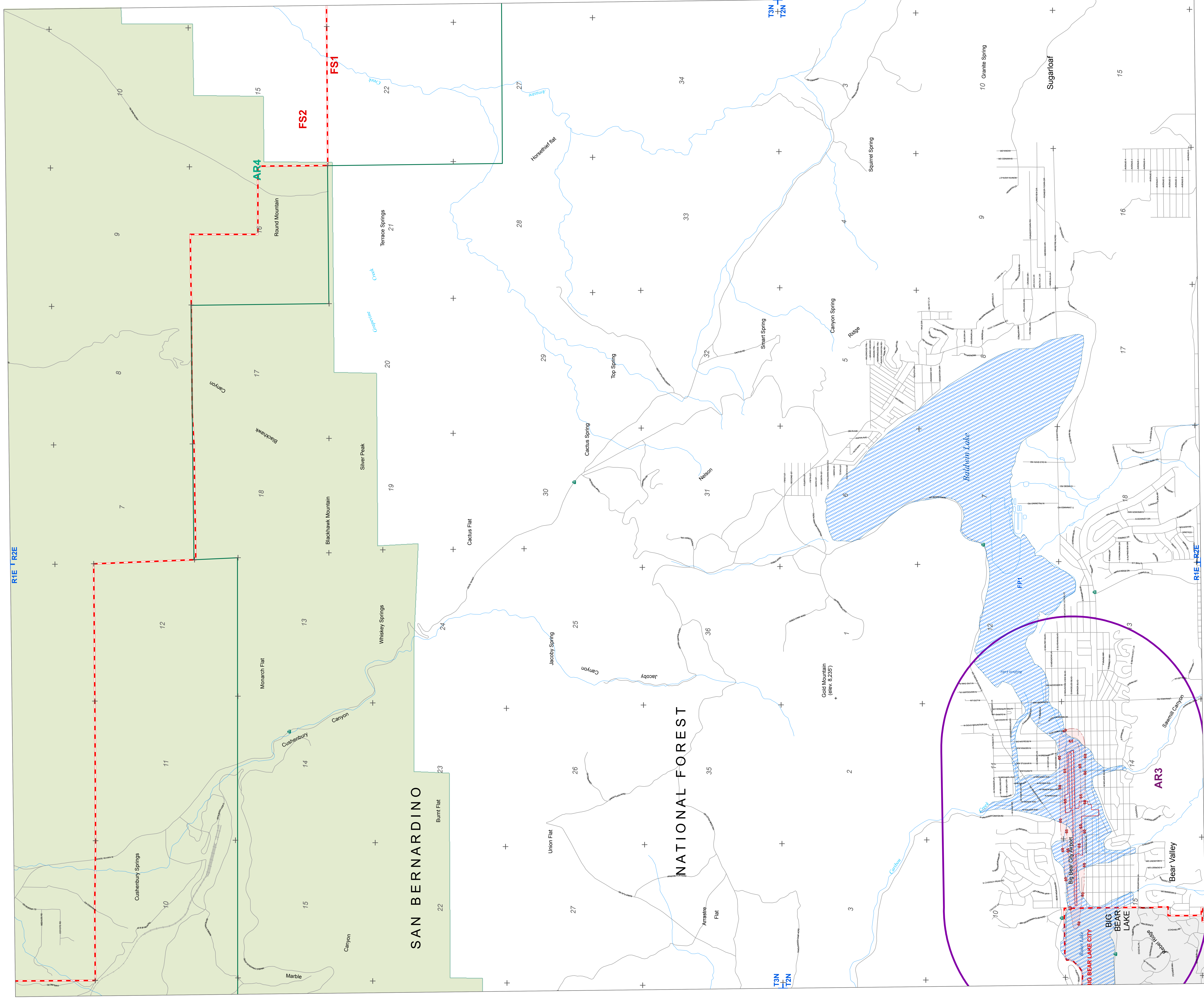
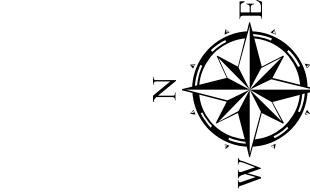
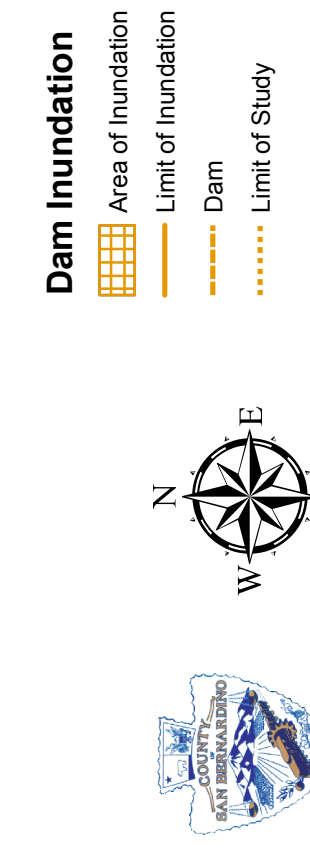


FIGURE VII-1

San Bernardino County Land Use Plan GENERAL PLAN Hazard Overlays



- Dam Inundation**
 - Area of inundation
 - Line of inundation
 - Dam
 - Limit of Study

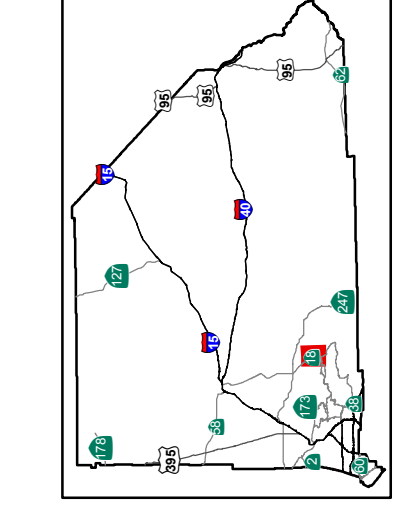
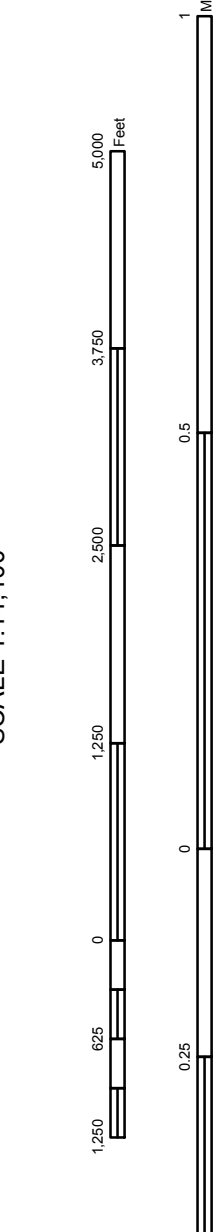
Map data compiled on 7/2/2015 using 1:25,000 scale USGS quadrangle data for the area of study. Map data compiled on 1/10/2000 scale USGS quadrangle data for the area of study. Map data compiled on 1/10/2000 scale USGS quadrangle data for the area of study. Positional accuracy of map data is at best plus or minus 750 feet or minus 500 feet.
- Flood Plain Safety (FP) Overlay District**
 - FP1 (Zone A - Inside 100 Year Flood Plain)
 - FP2 (Zone X - Inside 500 Year Flood Plain)
 - FP3 (Local Flood Data)

Map data compiled on 7/2/2015 using 1:25,000 scale USGS quadrangle data for the area of study. Map data compiled on 1/10/2000 scale USGS quadrangle data for the area of study. Map data compiled on 1/10/2000 scale USGS quadrangle data for the area of study. Positional accuracy of map data is at best plus or minus 150 feet or minus 100 feet.
- Noise Hazard (NH) Overlay District**
 - Noise Contour in LDN
 - Runway Location

Map data compiled on 7/2/2015 using 1:25,000 scale USGS quadrangle data for the area of study. Map data compiled on 1/10/2000 scale USGS quadrangle data for the area of study. Map data compiled on 1/10/2000 scale USGS quadrangle data for the area of study. Positional accuracy of map data is at best plus or minus 750 feet or minus 500 feet.
- Fire Safety (FS) Overlay District**
 - Fire Safety Boundary
 - FS1 Fire Safety Area 1
 - FS2 Fire Safety Area 2

Map data compiled on 7/2/2015 using 1:25,000 scale USGS quadrangle data for the area of study. Map data compiled on 1/10/2000 scale USGS quadrangle data for the area of study. Map data compiled on 1/10/2000 scale USGS quadrangle data for the area of study. Positional accuracy of map data is at best plus or minus 750 feet or minus 500 feet.
- Airport Safety Review**
 - AR3 (Airport Safety Review Area 3)
 - AR4 (Airport Safety Review Area 4)

Map data compiled on 7/2/2015 using 1:25,000 scale USGS quadrangle data for the area of study. Map data compiled on 1/10/2000 scale USGS quadrangle data for the area of study. Map data compiled on 1/10/2000 scale USGS quadrangle data for the area of study. Positional accuracy of map data is at best plus or minus 750 feet or minus 500 feet.



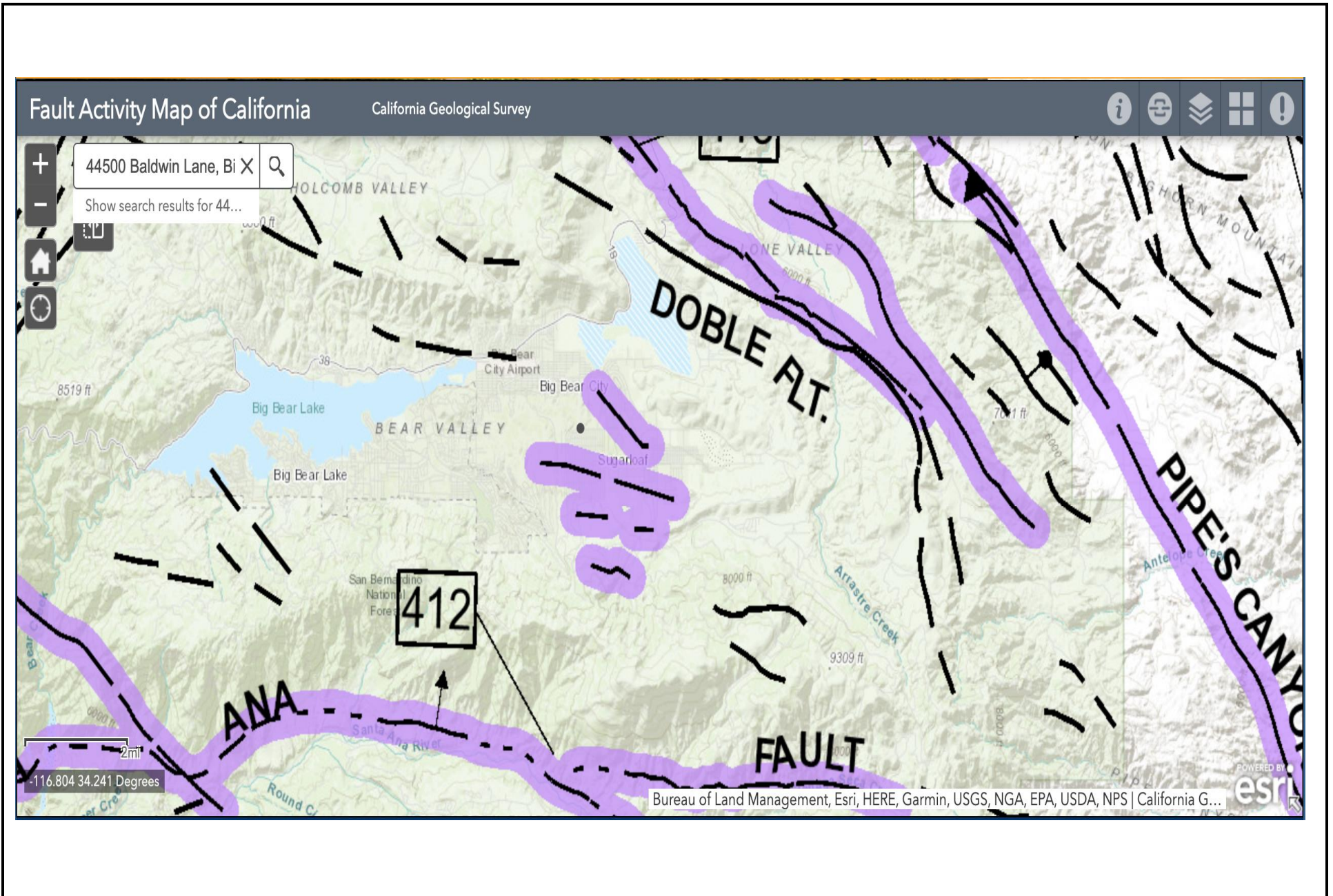


FIGURE VII-2

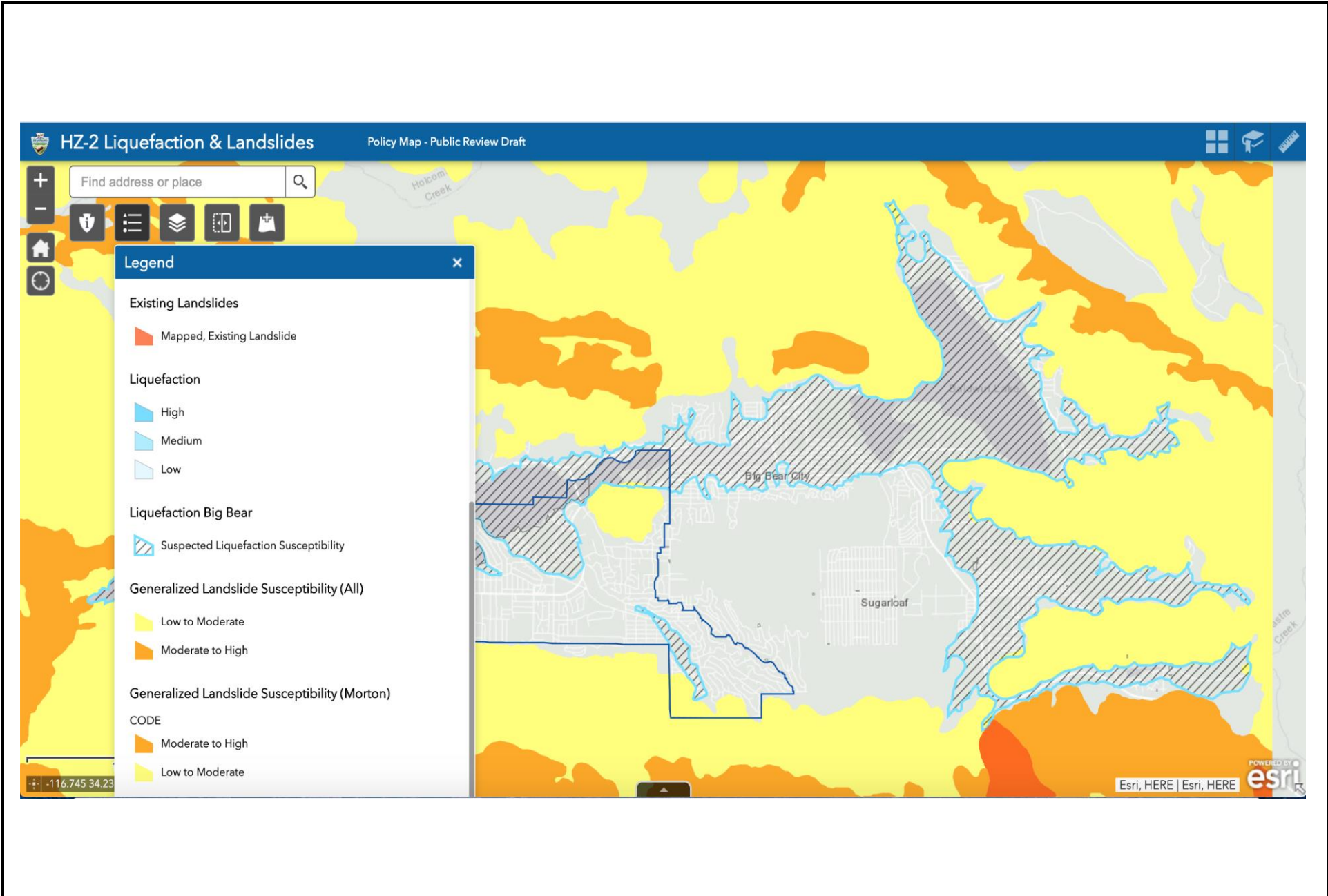
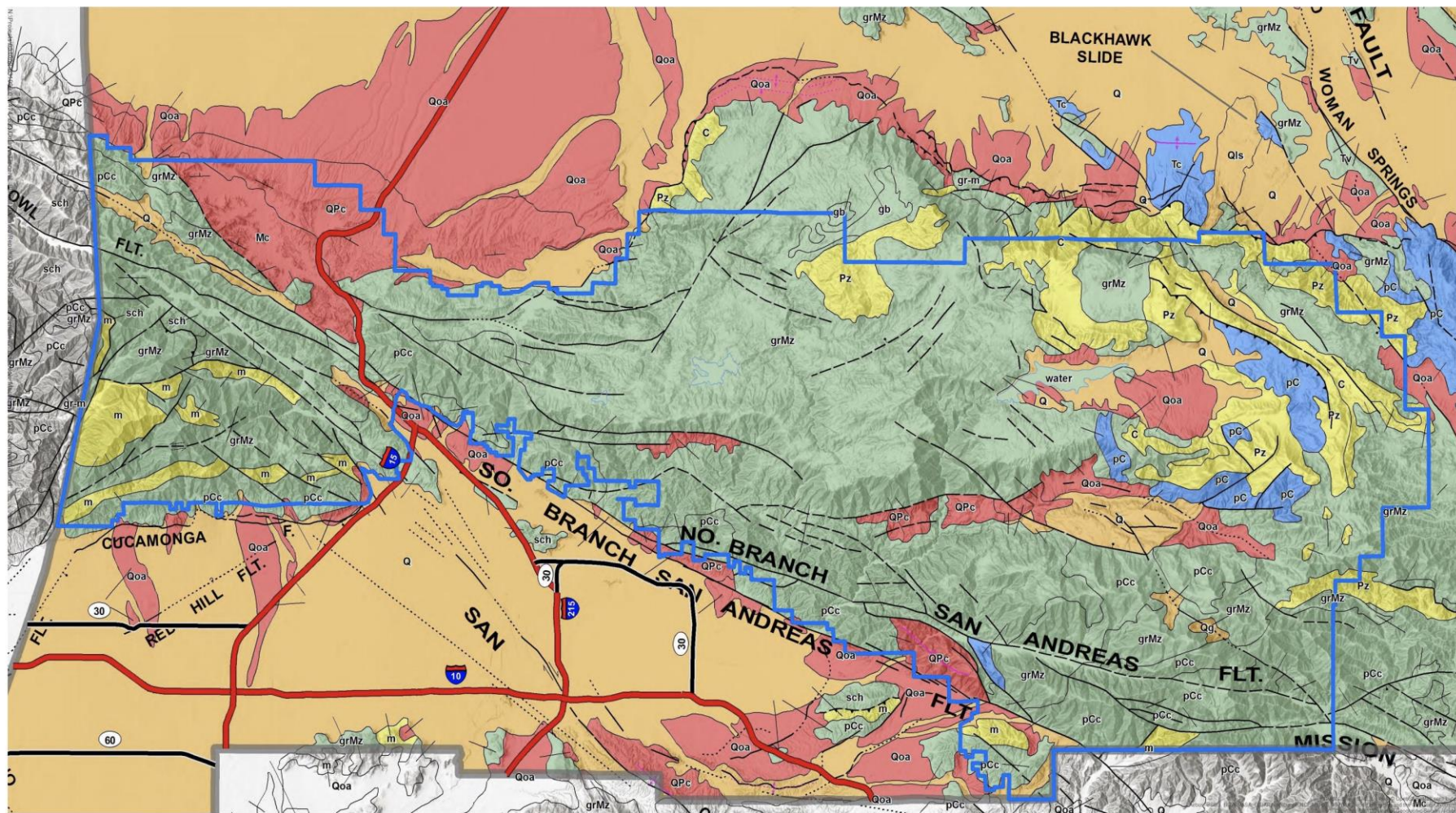


FIGURE VII-3



Legend	
Mountains Region	bedding
Varies	— contact, certain
None	— fault, approx. located
High	— fault, certain
Low-to-High fault, concealed
Low	-.-.- fault, concealed, queried
— scratch boundary	— normal fault, certain
— water boundary	— normal fault, approx. located
— thrust fault, certain	— normal fault, concealed
— thrust fault, approx. located	— Interstate
— dextral fault, certain	— State Highway
— sinistral fault, approx. located	
— thrust fault, certain (2)	



0 1 2 3 4 Miles Date: 10/24/2018 Created by PlaceWorks | Source: SWCA Environmental Consultants, 2018

5 Environmental Analysis
Fig. 5.5-2 Paleontological Sensitivity - Mountain Region

DRAFT **COUNTYWIDE PLAN**
Environmental Impact Report

SOURCE: San Bernardino County, Countywide Plan EIR (Draft)

FIGURE VII-4

Tom Dodson & Associates
Environmental Consultants

Paleontological Sensitivity Map

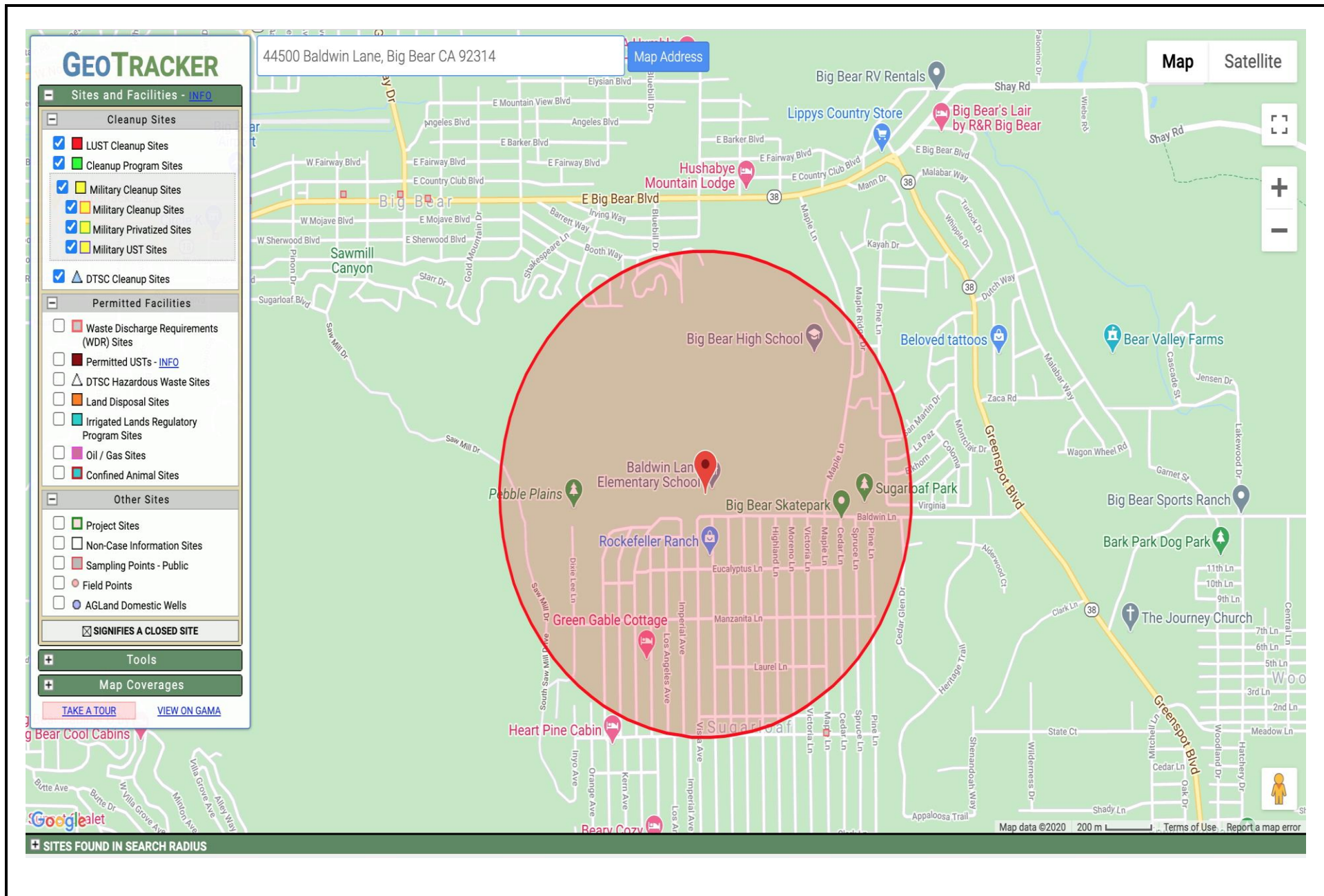
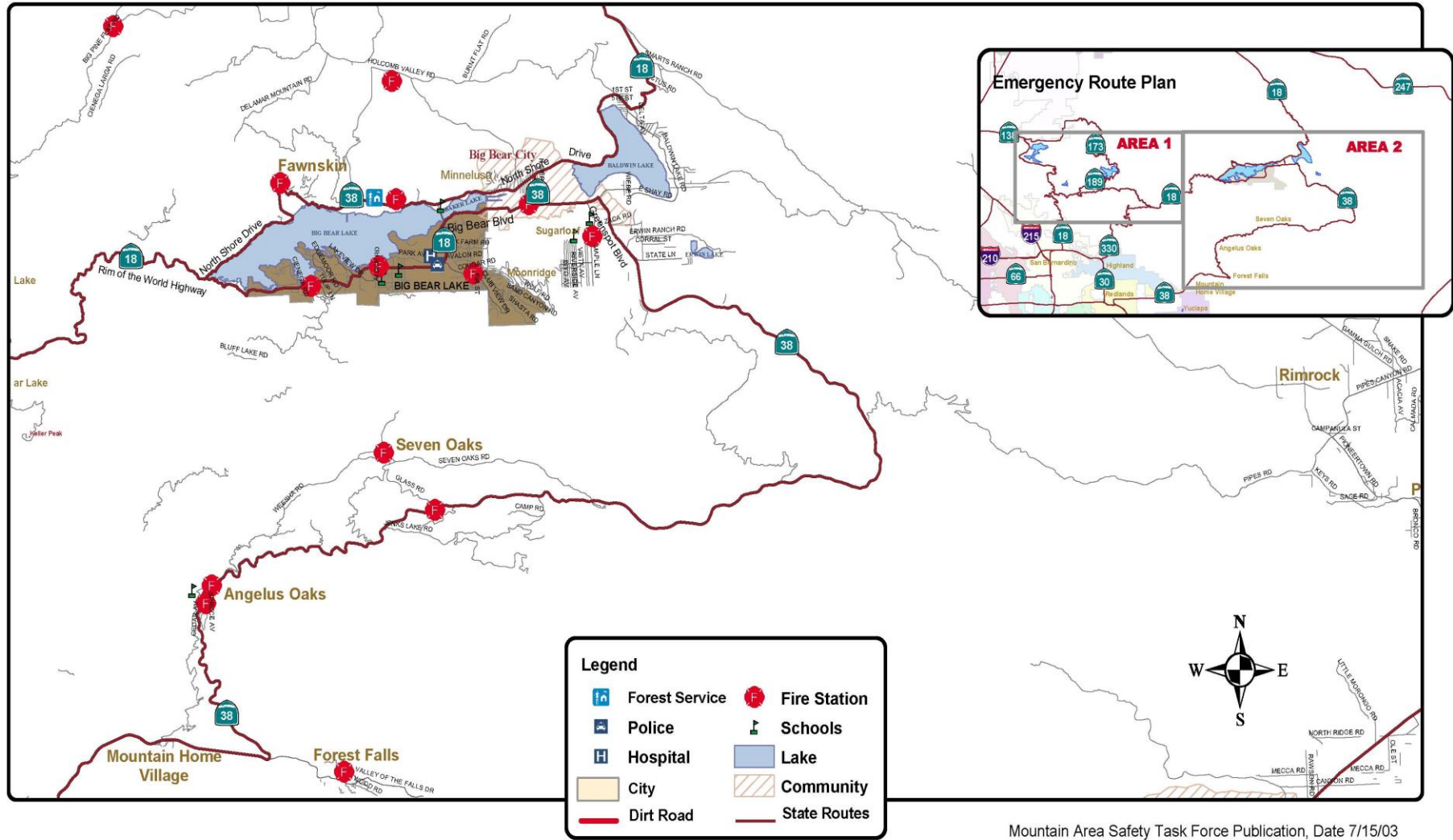


FIGURE IX-1



MOUNTAIN AREA EMERGENCY ROUTES

AREA 2



Legend

	Forest Service		Fire Station
	Police		Schools
	Hospital		Lake
	City		Community
	Dirt Road		State Routes



Mountain Area Safety Task Force Publication, Date 7/15/03

SOURCE: Mountain Area Safety Task Force Publication, 7/15/03

FIGURE IX-2

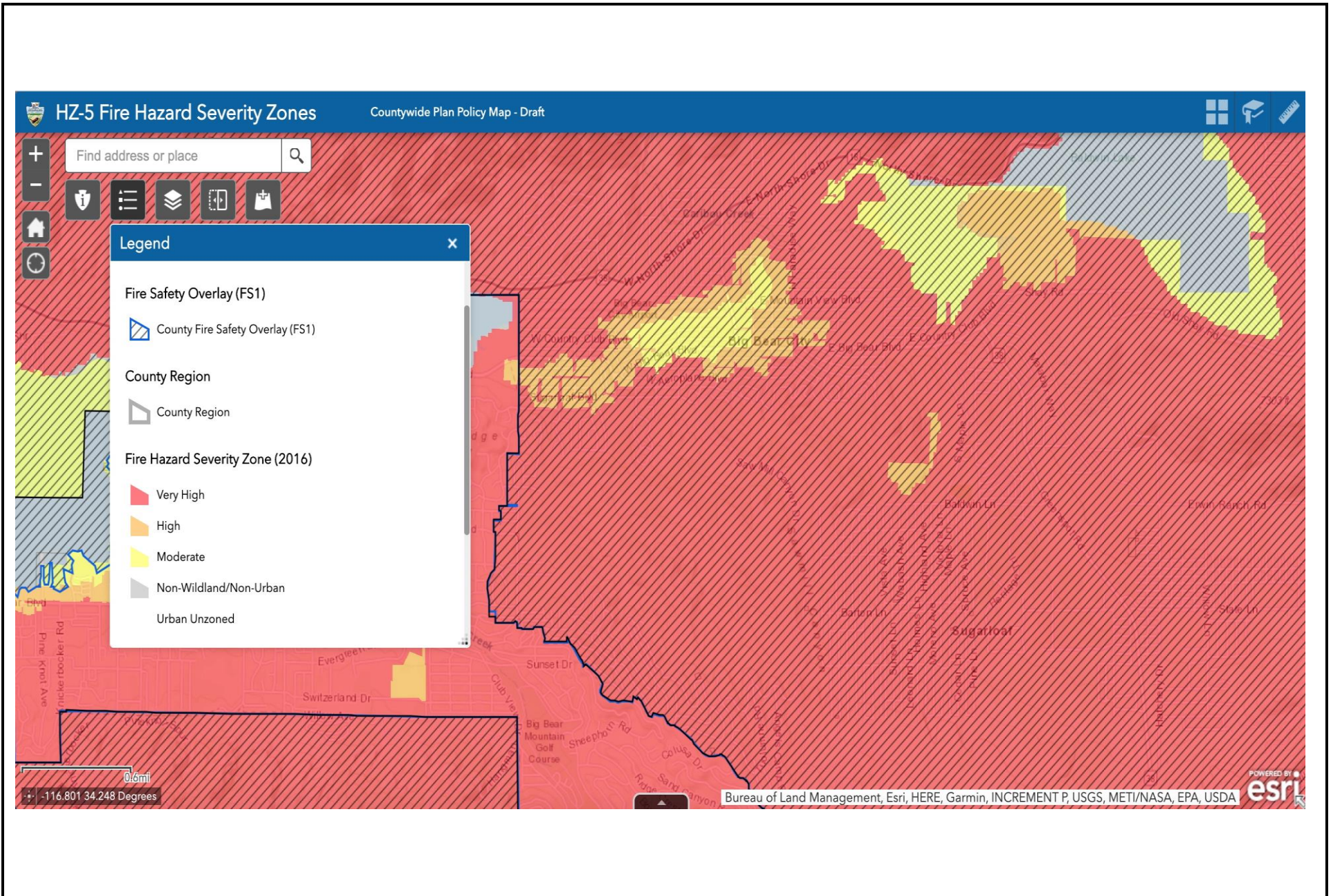


FIGURE IX-3

MAPLE HILL FIELDS COMPLEX

Bear Valley Unified School District Education Foundation

SAN BERNARDINO COUNTY

EXISTING HYDROLOGY

HYDROLOGIC DATA

SCS SOILS GROUP: C
 INTENSITY-DURATION SLOPE: 0.70
 2-YR/1-HR RAINFALL (AMC II): 0.693 in/hr
 10-YR/1-HR RAINFALL (AMC II): 1.20 in/hr
 100-YR/1-HR RAINFALL (AMC III): 2.20 in/hr



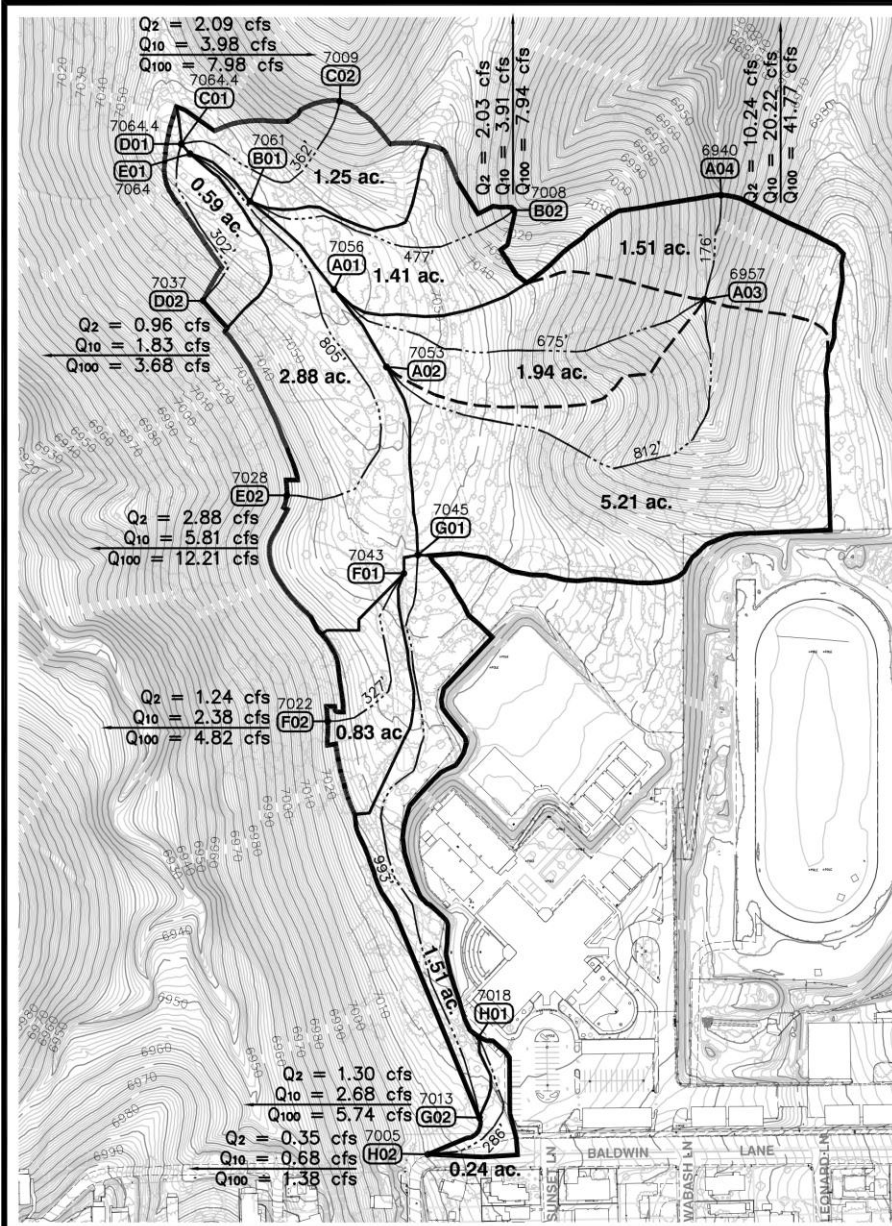
HICKS & HARTWICK, Inc.
 CIVIL ENGINEERS - LAND SURVEYORS

37 East Olive Avenue
 REDLANDS, CALIFORNIA 92373
 909.793.2257

Prepared: FEBRUARY 2021



SCALE: 1" = 200'



10193 Hydrology 2021-02.dwg : Existing - Feb 15, 2021 3:48pm (c) Hicks & Hartwick, Inc.

FIGURE X-1

MAPLE HILL FIELDS COMPLEX

Bear Valley Unified School District Education Foundation

SAN BERNARDINO COUNTY PROPOSED HYDROLOGY

HYDROLOGIC DATA
 SCS SOILS GROUP: C
 INTENSITY-DURATION SLOPE: 0.70
 2-YR/1-HR RAINFALL (AMC II): 0.693 in/hr
 10-YR/1-HR RAINFALL (AMC II): 1.20 in/hr
 100-YR/1-HR RAINFALL (AMC III): 2.20 in/hr



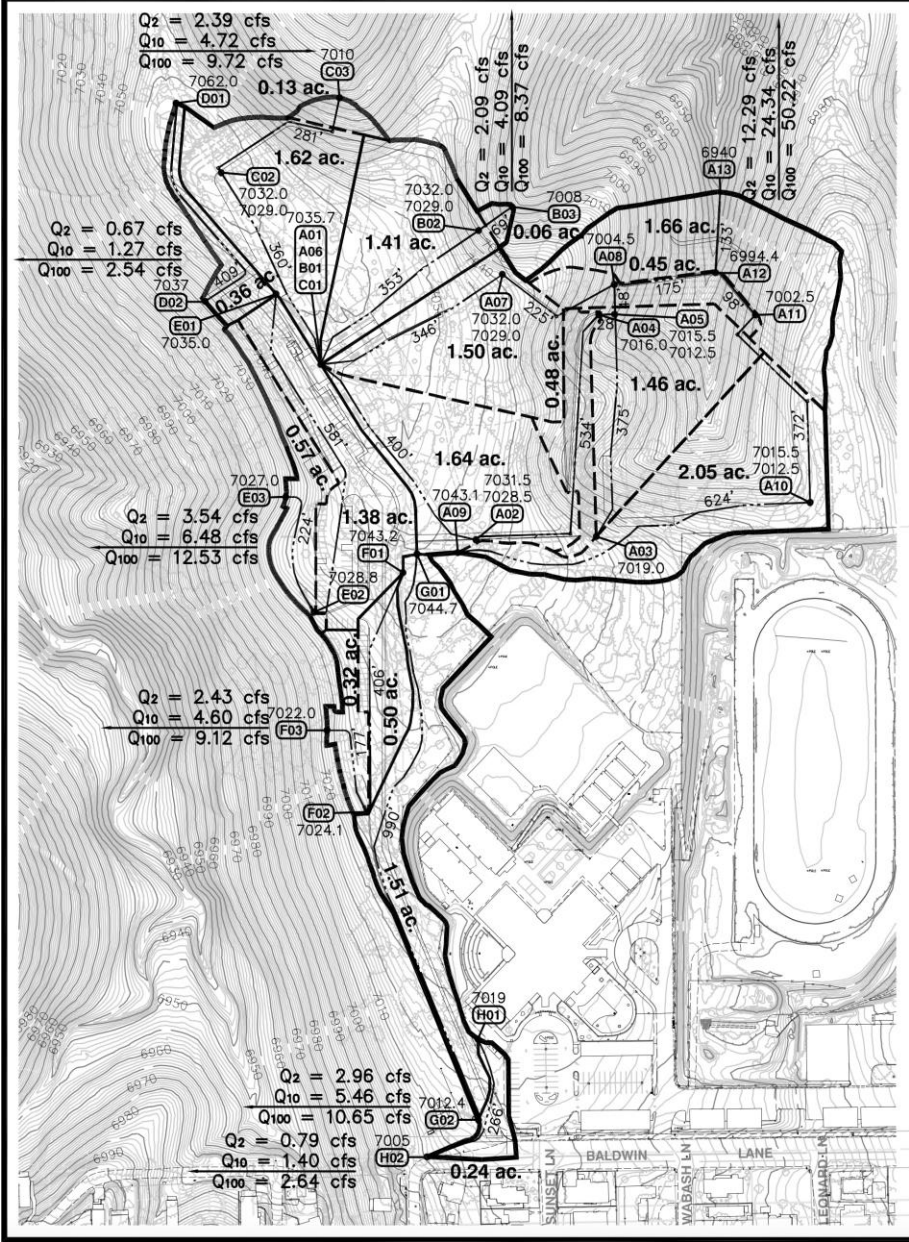
HICKS & HARTWICK, Inc.
 CIVIL ENGINEERS - LAND SURVEYORS

37 East Olive Avenue
 REDLANDS, CALIFORNIA 92373
 909.793.2257

Prepared: FEBRUARY 2021



SCALE: 1" = 200'



10193 Hydrology 2021-02.dwg : Proposed 3:58pm - Feb 15, 2021 (c) Hicks & Hartwick, Inc.

FIGURE X-2



PIN	Approximate location based on user input and does not represent an authoritative property location	SPECIAL FLOOD HAZARD AREAS	Without Base Flood Elevation (BFE) Zone A, V, A99	With BFE or Depth	Regulatory Floodway Zone AE, AO, AH, VE, AR	OTHER AREAS OF FLOOD HAZARD	0.2% Annual Chance Flood Hazard, Areas of 1% annual chance flood with average depth less than one foot or with drainage areas of less than one square mile Zone X	Future Conditions 1% Annual Chance Flood Hazard Zone X	Area with Reduced Flood Risk due to Levee. See Notes, Zone X	Area with Flood Risk due to Levee Zone D	OTHER FEATURES	20.2 Cross Sections with 1% Annual Chance Water Surface Elevation	17.5 Coastal Transect	Base Flood Elevation Line (BFE)	Limit of Study	Jurisdiction Boundary	Coastal Transect Baseline	Profile Baseline	Hydrographic Feature	GENERAL STRUCTURES	Channel, Culvert, or Storm Sewer	Levee, Dike, or Floodwall
MAP PANELS	Selected FloodMap Boundary	Digital Data Available	No Digital Data Available	Unmapped	Area of Minimal Flood Hazard Zone X	Effective LOMRs	Area of Undetermined Flood Hazard Zone D	Otherwise Protected Area	Coastal Barrier Resource System Area													

FIGURE X-3

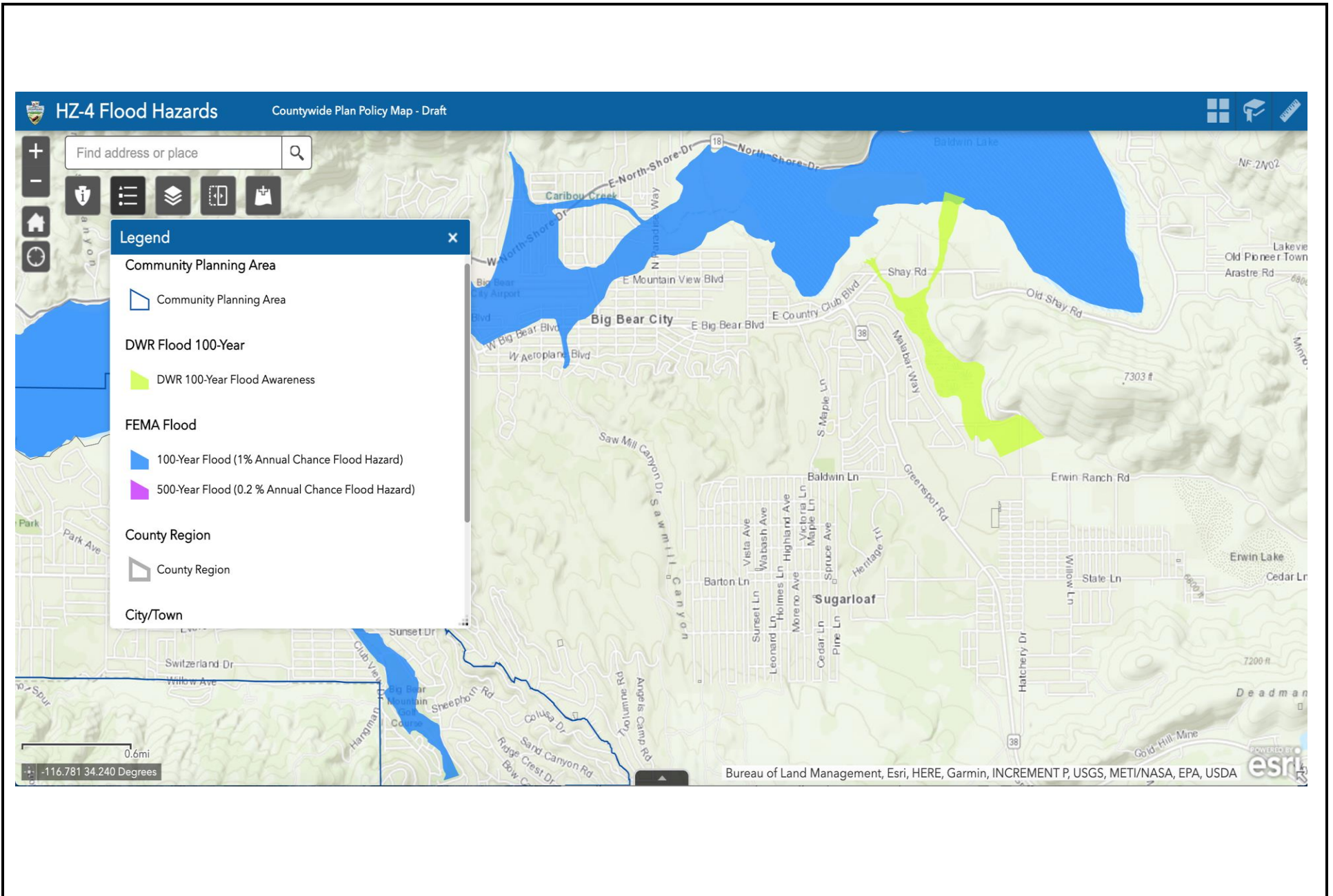
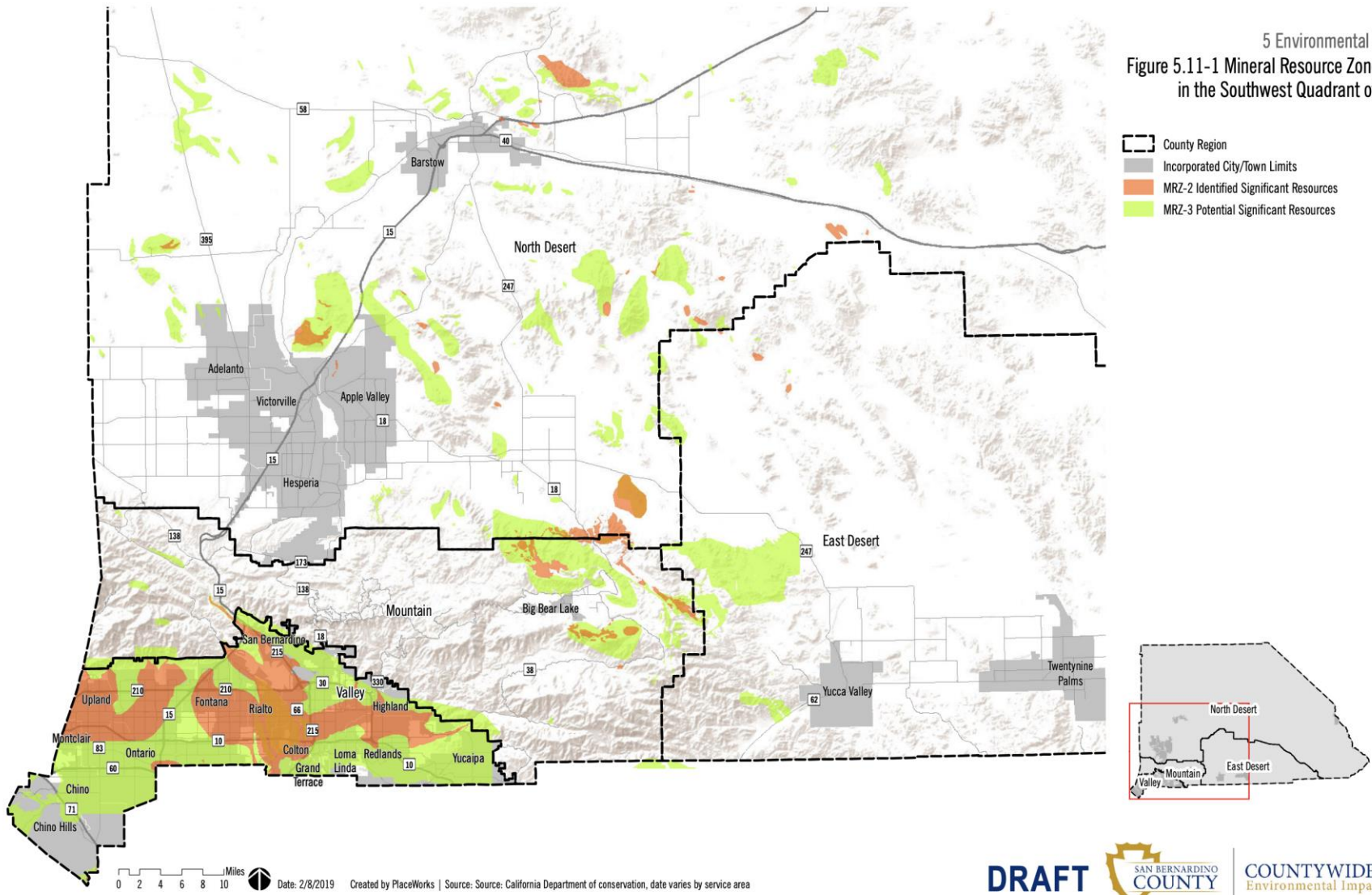


FIGURE X-4

5 Environmental Analysis

Figure 5.11-1 Mineral Resource Zones 2 & 3 in the Southwest Quadrant of County

-  County Region
-  Incorporated City/Town Limits
-  MRZ-2 Identified Significant Resources
-  MRZ-3 Potential Significant Resources



SOURCE: San Bernardino County, Countywide Plan EIR (Draft)

FIGURE XII-1

Tom Dodson & Associates
Environmental Consultants

Mineral Resources

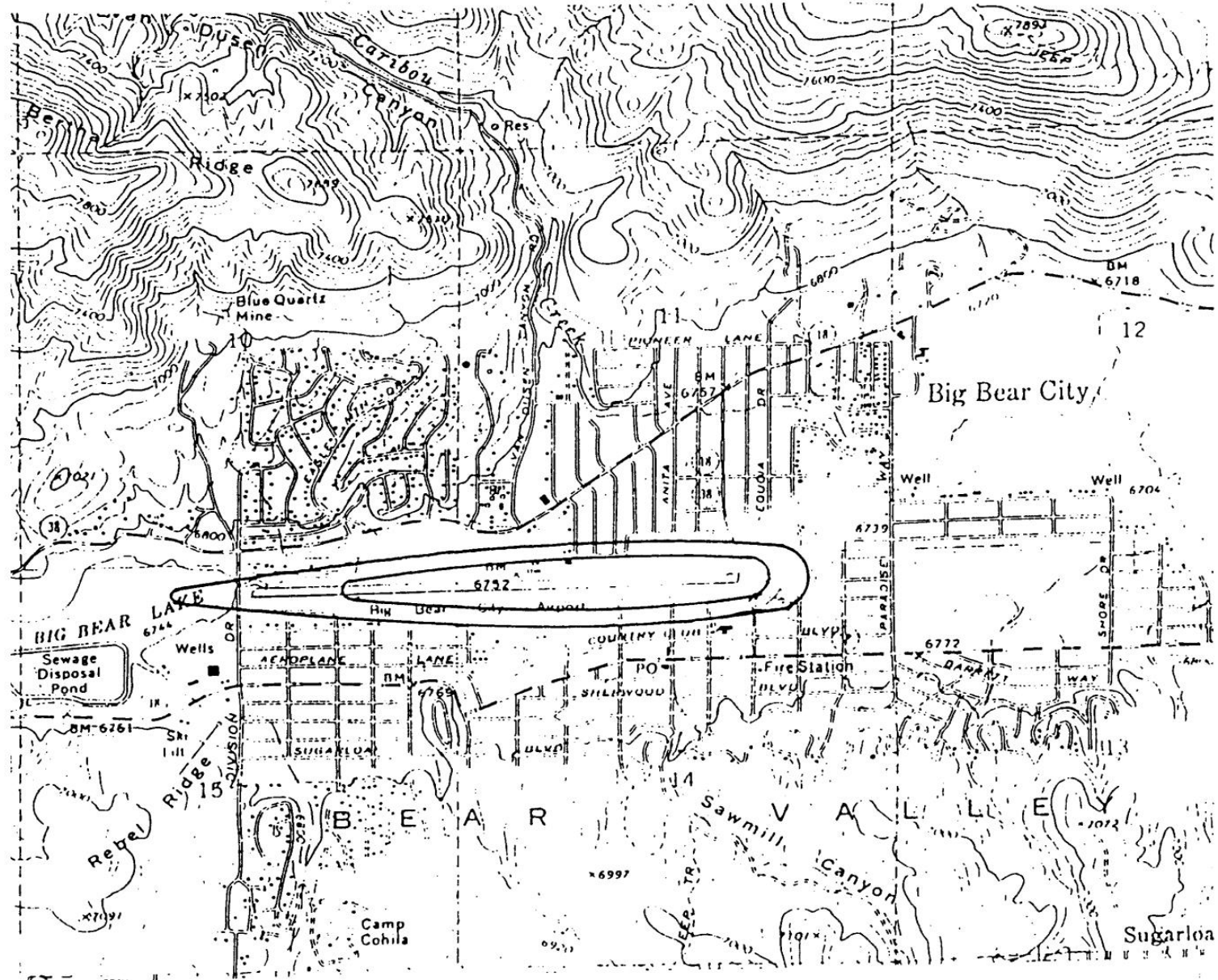


FIGURE XIII-1