



Land Use Services Department

# AB 98 Phase II: Truck Routes in Unincorporated San Bernardino County

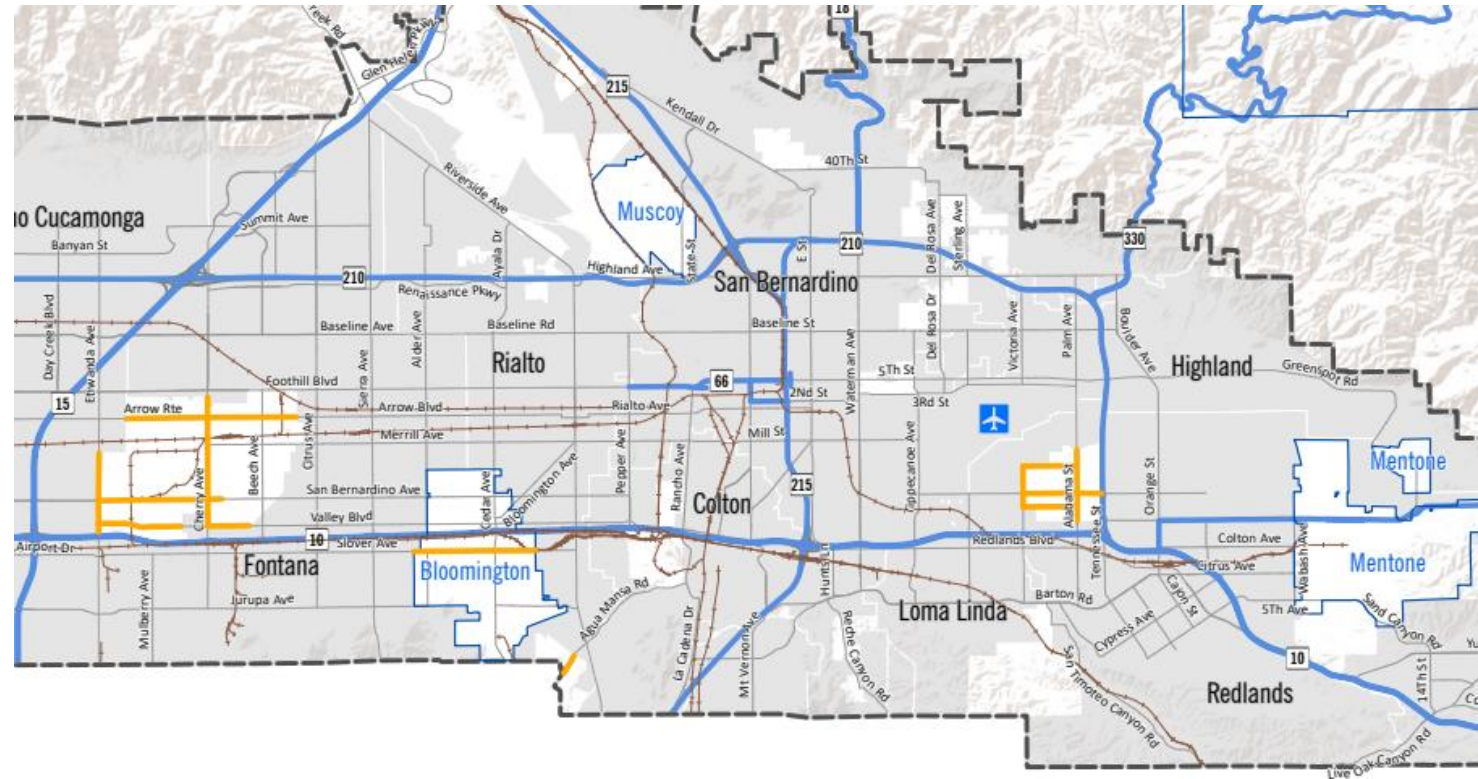


## State law (Assembly Bill 98)

- Signed on September 29, 2024, it sets requirements for designated truck routes to improve goods movement and reduce impacts on sensitive receptors.

## County requirements

- Adopt truck routes into the Transportation and Mobility Element of the Countywide Plan by January 1, 2026.
- Design routes to maximize use of major highways and minimize truck travel near sensitive receptors.
- Provide GIS route maps, signage, and opportunities for public input.
- County adopted routes on December 16, 2025.



## Key Focus Areas

- Finalize signage program incorporating community feedback
- Expand public awareness and education about truck routes
- Continue gathering community feedback to guide implementation
- As needed refine designated truck routes based on updated analysis and community input

## Milestones & Expected Outcomes

- Sign installation
- Weight-restricted roads and supporting infrastructure based on feedback
- Increase community and industry understanding regarding truck routes
- Continue coordination with regional and statewide partners

## State

- CHP to improve enforcement of truck routes
- Caltrans for truck route consistency and data sharing

## Regional/ Local

- SBCTA to support regional planning
- Local agencies to refine truck routes as needed

## **CHP is responsible for enforcing:**

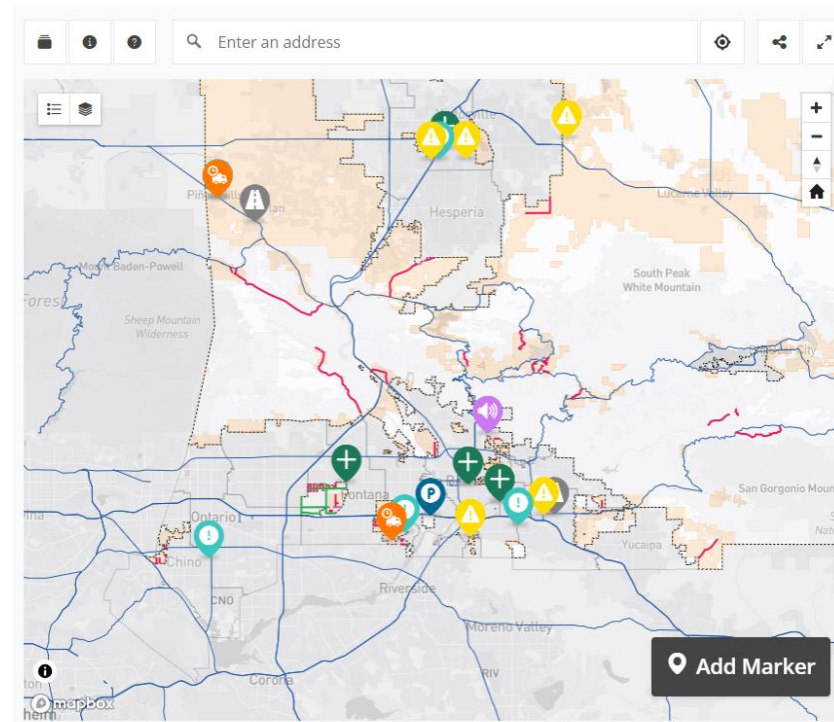
- Designated truck routes
- Weight-restricted roads
- Illegal parking or idling on public roadways

## **To report a violation, contact:**

- California Highway Patrol (CHP) 909-383-4247

**Federal law allows heavy duty trucks to travel along local roads when necessary to serve businesses and obtain food/rest/repairs by the safest and most practical route regardless of State or County truck route designations (23 CFR 658.19(a))**

- Launch interactive **Social Pinpoint Map**
- Host **community meeting** to review input from the map and initial outreach
- **Develop educational materials** to support awareness for both the community and industry




## Map Overview

The dotted boundaries identify unincorporated San Bernardino County. Within this area, the map displays sensitive receptors (shaded areas in beige), federal and state designated truck routes (freeways in blue), truck routes designated by San Bernardino County (roadways in green), and current (roadways in red) and proposed truck prohibitions (roadways in purple).

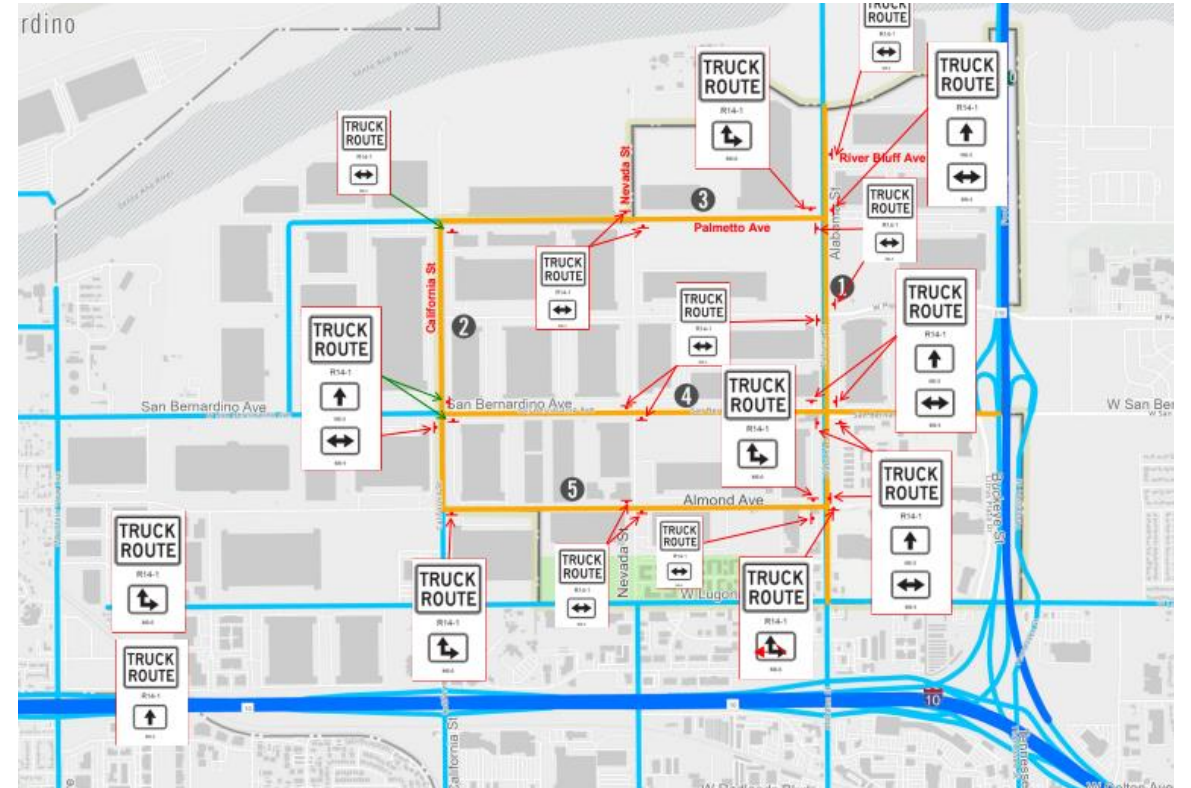
Note that truck routes determined by incorporated cities/towns are not displayed for two reasons: 1. the focus for this outreach is on unincorporated areas, and 2. an accurate comprehensive map of incorporated truck routes is not available.

## Tips for Getting Started

**How to place a comment:** Start by searching your address and clicking "Add Marker". Click the  icon in the top left of the map for more detailed step-by-step instructions on how to create a comment.

**Comment category details:** Click the  icon in the top left of the map to learn about the different comment categories and what each one represents.

- Draft plans available for Bloomington, Fontana SOI, Redlands East Valley Area.
  - Deadline for comment is June 3, 2026
  - View plans at [lus.sbcounty.gov/truckroutes](https://lus.sbcounty.gov/truckroutes)
- Signage Installation and Timing
- Idling/ Idling Restrictions
- Consideration of time-of-day restrictions and physical roadway design changes



Example of draft sign plan.

## Truck Restrictions

- Limit vehicle access to light-duty vehicles (Classes 1-3) that weigh less than 16,000 pounds
- Exemption for public services like schools and trash pickup
- Roads identified for new truck restrictions in Implementation Plan include:
  - San Bernardino Avenue (from Live Oak Avenue to Elm Avenue) in unincorporated Fontana
  - Santa Ana Avenue (from roughly 600 feet east of Cedar Avenue to the Rialto city boundary) in Bloomington

## Annual Evaluation

- Restricted roads will be reviewed annually by DPW based on public input.

- Code Enforcement actively addressing illegal truck parking
- Funding to expand current efforts that identify, notice, enforce, and litigate illegal truck storage as needed

- **Launch [Social Pinpoint Map](#)** to collect community and industry feedback (first review June 3rd)
- **Finalize and install truck route signage** across designated routes (final comments by June 3rd)
- **Follow-up meeting** with community members and industry partners



Scan the QR code to go to  
[fp.mysocialpinpoint.com/sbc-ab-98-truck-routes](https://fp.mysocialpinpoint.com/sbc-ab-98-truck-routes)

## **Unincorporated San Bernardino County AB 98 Project Contacts**

### **Truck Signage, Restrictions, Infrastructure**

Anthony Pham, Engineering Manager  
909-387-8187

[Anthony.Pham@dpw.sbcounty.gov](mailto:Anthony.Pham@dpw.sbcounty.gov)

### **Community Outreach Events**

#### **General Comments/ Questions**

Lauren Miracle, Planner  
909-387-4180

[Lauren.Miracle@lus.sbcounty.gov](mailto:Lauren.Miracle@lus.sbcounty.gov)

Vincent Acuna, Planning Manager

[Vincent.acuna@lus.sbcounty.gov](mailto:Vincent.acuna@lus.sbcounty.gov)

## **Report a Violation**

### **Truck Route & Illegal Street Parking/Idling**

California Highway Patrol (CHP)

San Bernardino: 909-383-4247

Fontana: 909-428-5400

Rancho Cucamonga: 909-980-3994

### **Illegal Truck Parking on Private Property**

Code Enforcement: 909-884-4056

[CodeEnforcementDivision@lus.sbcounty.gov](mailto:CodeEnforcementDivision@lus.sbcounty.gov)

### **Websites**

[lus.sbcounty.gov/truckroutes](http://lus.sbcounty.gov/truckroutes)

[fp.mysocialpinpoint.com/sbc-ab-98-truck-routes](http://fp.mysocialpinpoint.com/sbc-ab-98-truck-routes)