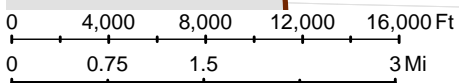
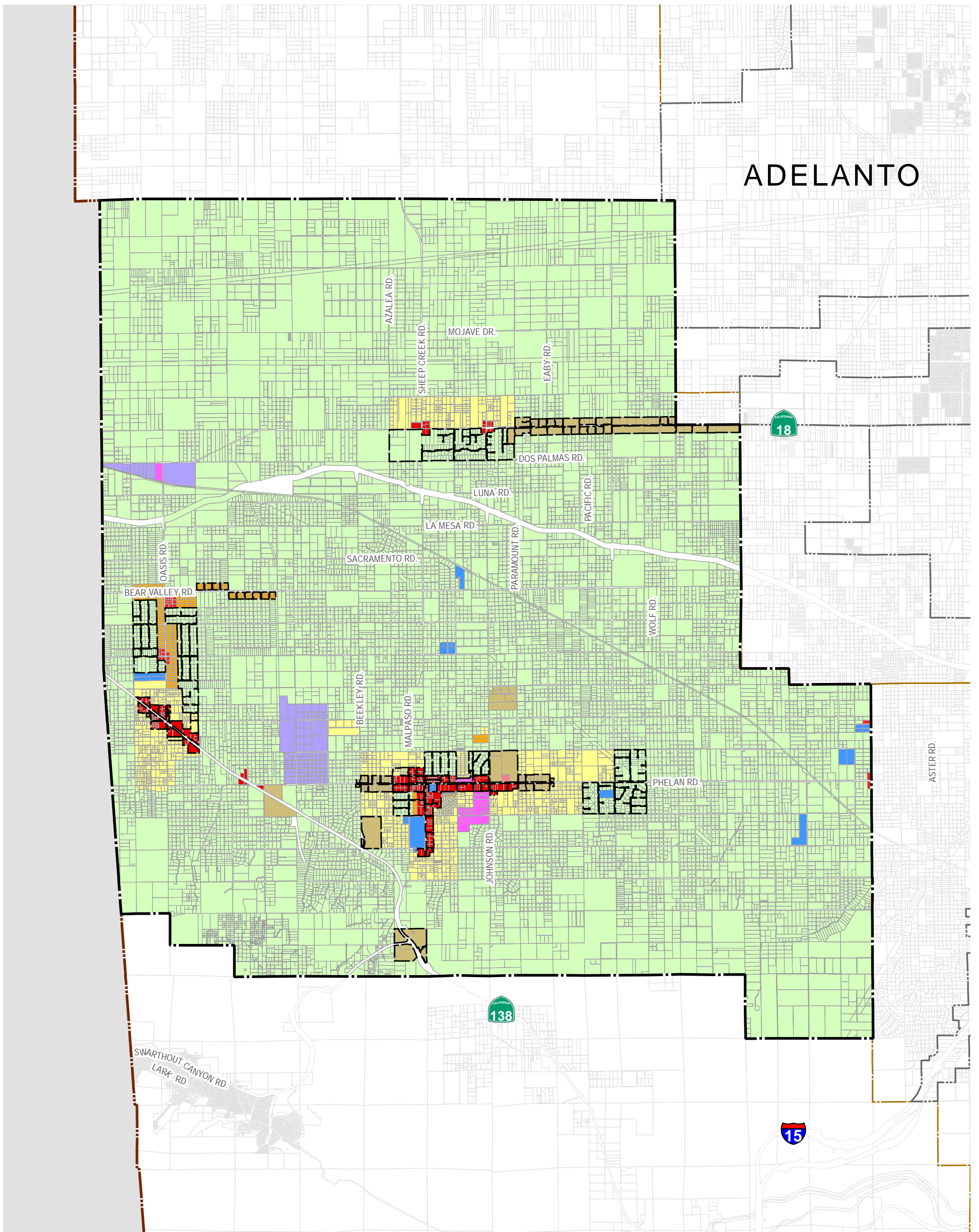


ADELANTO

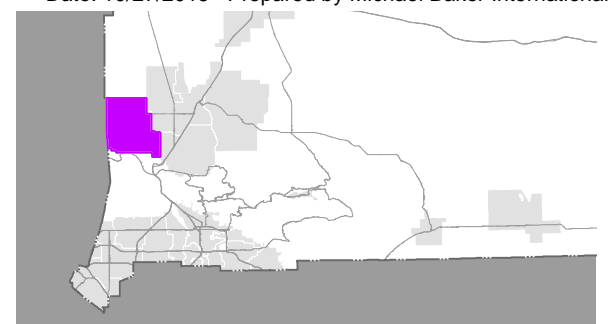


Date: 10/27/2016 Prepared by Michael Baker International

Land Use Categories

- | | |
|--------------------------------------------------------------------|---------------------------------------------------------------------|
| ■ RL, Rural Living | ■ IC, Community Industrial |
| ■ RS, Single Residential | ■ IR, Regional Industrial |
| ■ RM, Multiple Residential | ■ IN, Institutional |
| ■ CR, Rural Commercial | ■ AG, Agriculture |
| ■ CO, Office Commercial | ■ FW, Floodway |
| ■ CN, Neighborhood Commercial | ■ OS, Open Space |
| ■ CG, General Commercial | ■ RC, Resource Conservation |
| ■ CS, Service Commercial | ■ SD, Special Development |
| ■ CH, Highway Commercial | ■ SP, Specific Plan |

- | |
|------------------------------------------------------------------------------------------------------------------------------------------|
| Areas of Change |
| Phelan / Pinon Hills Community Boundary |
| County Boundary |
| City/Town Limits |
| City/Town SOIs |



0 10 20 Mi

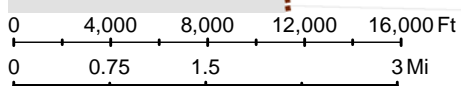
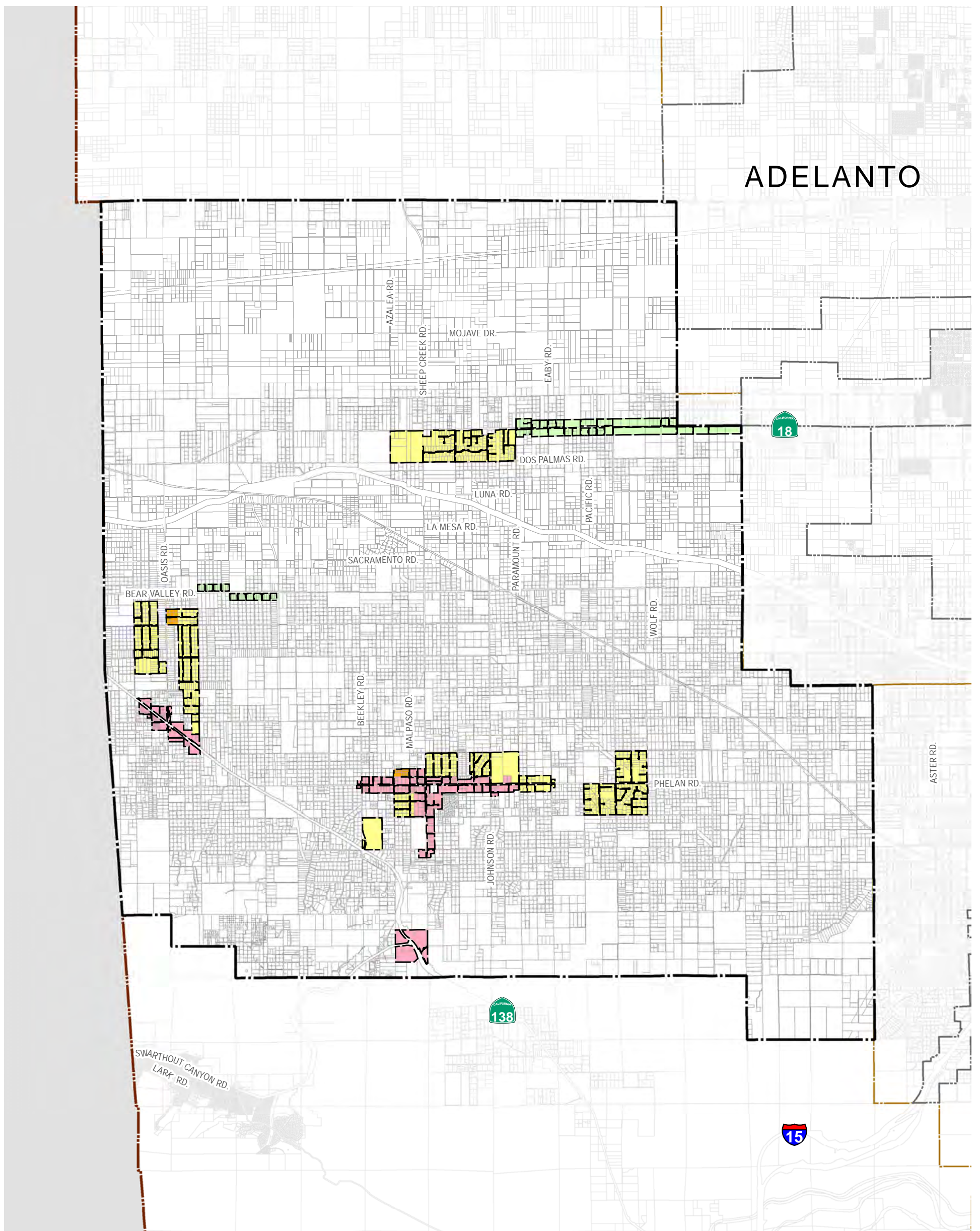
WORKING DRAFT for 11/03/16 Planning Commission workshop discussion

CURRENT LAND USE CATEGORIES Phelan / Pinon Hills Community Plan



COUNTYWIDE PLAN
Phelan / Pinon Hills Community Plan

ADELANTO

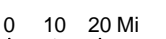
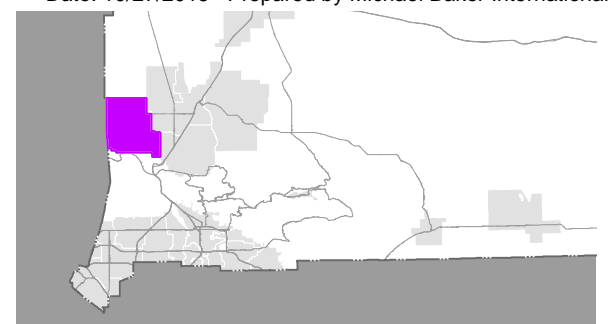


Land Use Categories

- | | |
|--------------------------------------------------------------------|---------------------------------------------------------------------|
| ■ RL, Rural Living | ■ IC, Community Industrial |
| ■ RS, Single Residential | ■ IR, Regional Industrial |
| ■ RM, Multiple Residential | ■ IN, Institutional |
| ■ CR, Rural Commercial | ■ AG, Agriculture |
| ■ CO, Office Commercial | ■ FW, Floodway |
| ■ CN, Neighborhood Commercial | ■ OS, Open Space |
| ■ CG, General Commercial | ■ RC, Resource Conservation |
| ■ CS, Service Commercial | ■ SD, Special Development |
| ■ CH, Highway Commercial | ■ SP, Specific Plan |

- | |
|------------------------------------------------------------------------------------------------------------------------------------------|
| Areas of Change |
| Phelan / Pinon Hills Community Boundary |
| County Boundary |
| City/Town Limits |
| City/Town SOIs |

Date: 10/27/2016 Prepared by Michael Baker International



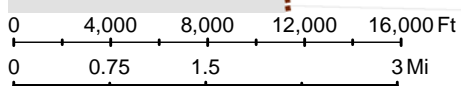
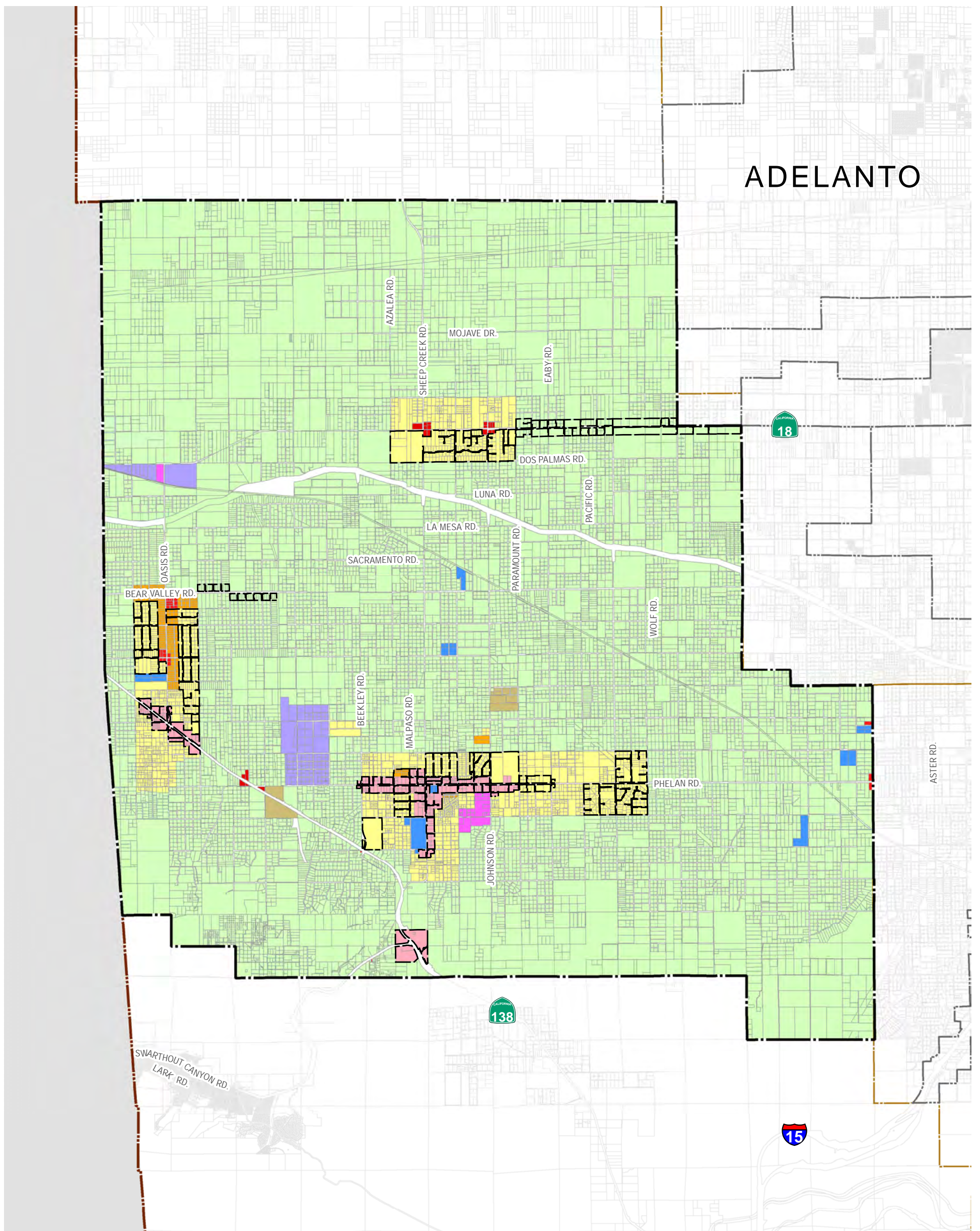
WORKING DRAFT for 11/03/16 Planning Commission workshop discussion

LAND USE CATEGORIES AREAS OF CHANGE Phelan / Pinon Hills Community Plan



COUNTYWIDE PLAN
Phelan / Pinon Hills Community Plan

ADELANTO

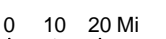
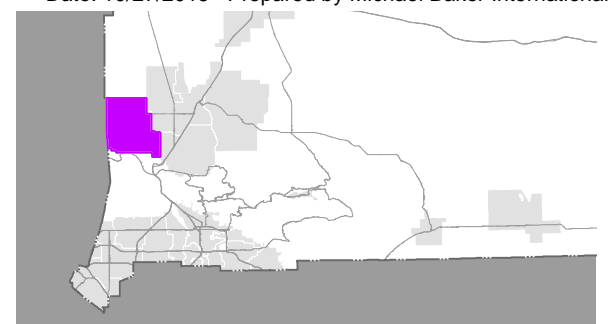


Land Use Categories

- | | |
|----------------------------------------------------------------|---------------------------------------------------------------------|
| ■ RL, Rural Living | ■ IC, Community Industrial |
| ■ RS, Single Residential | ■ IR, Regional Industrial |
| ■ RM, Multiple Residential | ■ IN, Institutional |
| ■ CR, Rural Commercial | ■ AG, |
| ■ CO, Office Commercial | ■ FW, Floodway |
| ■ CN, Neighborhood Commercial | ■ OS, Open Space |
| ■ CG, General Commercial | ■ RC, Resource Conservation |
| ■ CS, Service Commercial | ■ SD, Special Development |
| ■ CH, Highway Commercial | ■ SP, Specific Plan |

- | |
|------------------------------------------------------------------------------------------------------------------------------------------|
| Areas of Change |
| Phelan / Pinon Hills Community Boundary |
| County Boundary |
| City/Town Limits |
| City/Town SOIs |

Date: 10/27/2016 Prepared by Michael Baker International



WORKING DRAFT for 11/03/16 Planning Commission workshop discussion

PROPOSED LAND USE CATEGORIES Phelan / Pinon Hills Community Plan



COUNTYWIDE PLAN
Phelan / Pinon Hills Community Plan