



Community Development and Housing Agency
Community Development and Housing

San Bernardino County Consolidated Plan and Analysis of Impediments Project Overview

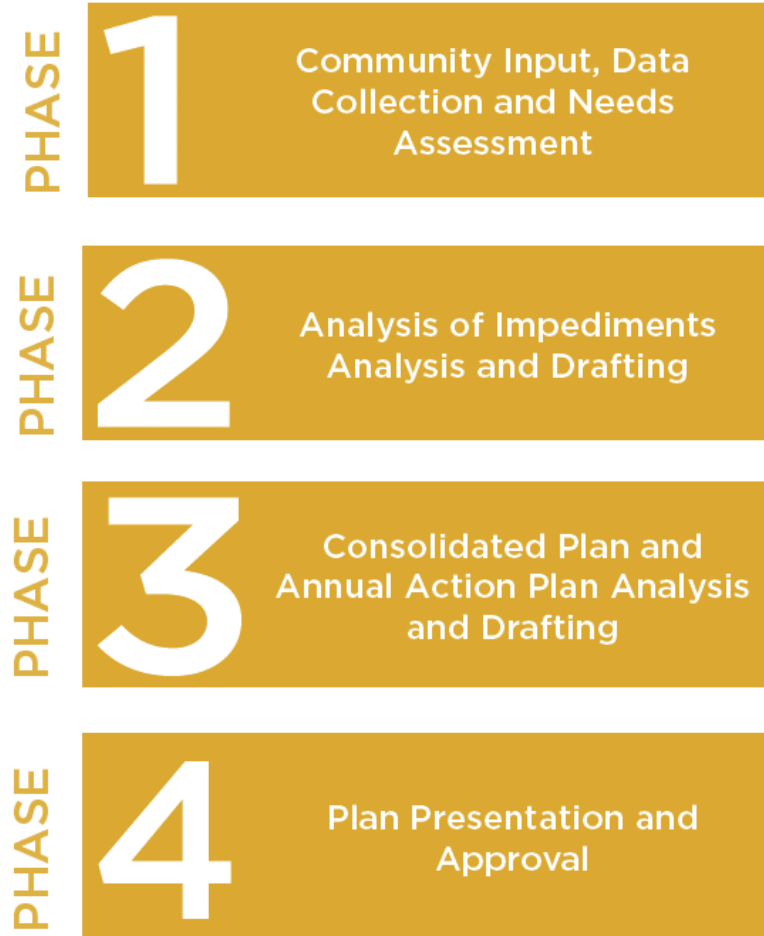
July 2019

- Identifies and prioritizes community development and housing needs
- Serves as funding application for:
 - Community Development Block Grant (CDBG)
 - HOME Investment Partnerships Act (HOME)
 - Emergency Solutions Grant (ESG)
- Develops a strategy to target federal grant money to areas with greatest needs

The **County of San Bernardino** and the following Cooperating Cities:

- Adelanto
- Barstow
- Big Bear Lake
- Chino Hills[†]
- Colton
- Grand Terrace
- Highland
- Loma Linda
- Montclair
- Needles
- Rancho Cucamonga[†]
- Redlands
- Twentynine Palms
- Yucaipa
- Town of Yucca Valley
- Unincorporated areas of San Bernardino County

[†] Chino Hills and Rancho Cucamonga participate only in the County's HOME Consortium; they administer their own CDBG programs.



- Develop communities through:
 - Decent housing
 - Suitable living environment
 - Expanded economic opportunity
- Result in:
 - Benefit to people with low or moderate incomes
 - Prevent or eliminate slum or blight
 - Meet an urgent need



- Wide variety, including:
 - Infrastructure Improvements
 - Public facilities & services
 - Economic development activities
 - Planning and administration
 - Other activities



Services

- Public safety
- Childcare / Youth services
- Health or dental needs
- Senior services
- Transportation services

Facilities Infrastructure

- Streets & sidewalks
- Water & sewer
- Parks & playgrounds
- Recreation facilities
- Homeless shelters
- Senior Centers

HOME FUNDING OBJECTIVES

- Provide flexibility to allow communities to determine priority needs
- Encourage collaboration with community-based nonprofits



- Ensure long term affordability of housing
- Target assistance to households with less than 80% of area median income

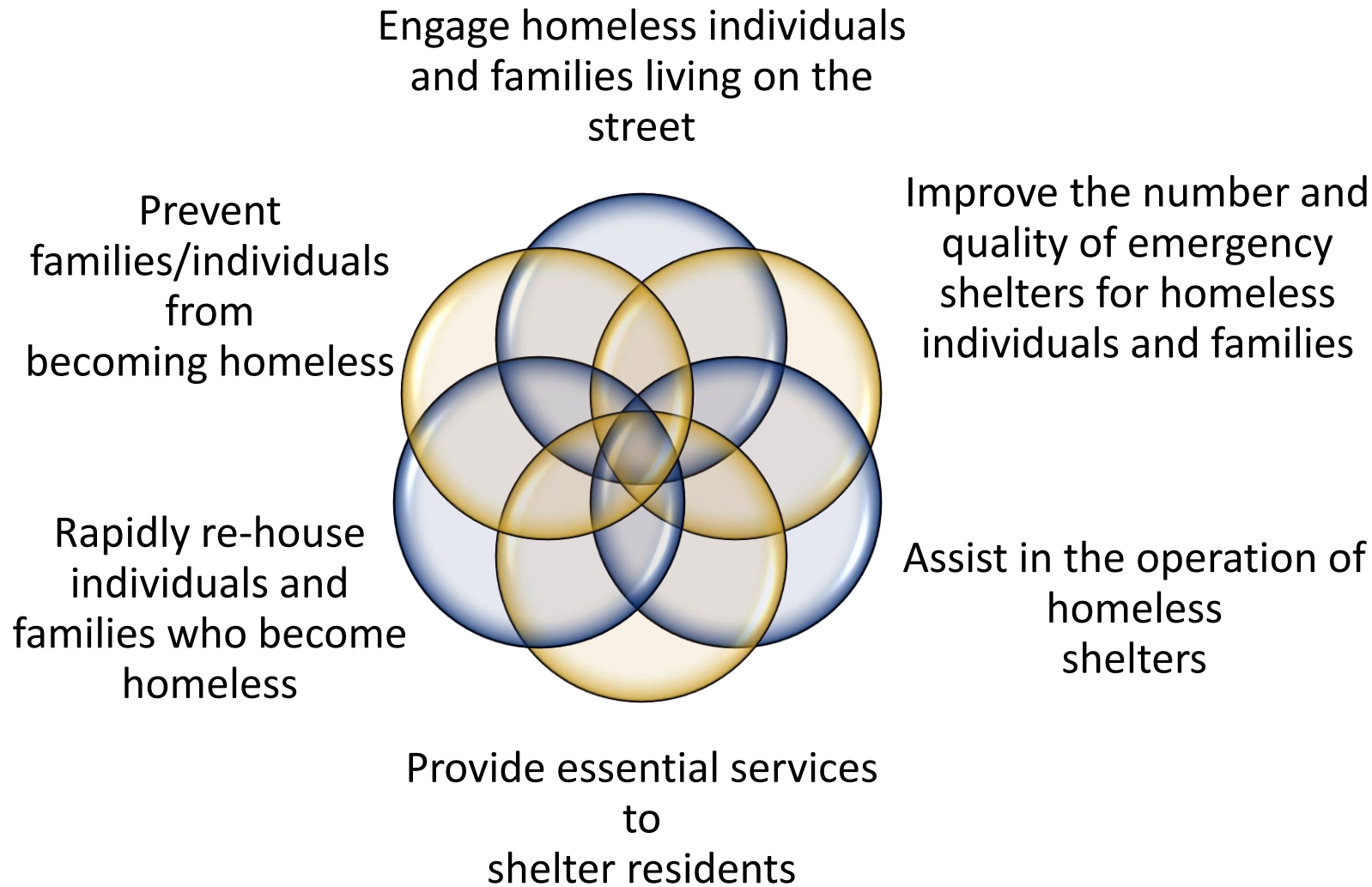
Multi-Family Housing Units

Acquisition

Rehabilitation

New Construction





Categories:

Essential Services

Emergency Shelter

Homeless
Prevention

Rapid Re-Housing

Street Outreach

HMIS



ESG Supportive Services

Employment
Training

Financial Literacy

Counseling

Child Care

Transportation
Vouchers

TAKE THE SURVEY

www.sbcountyplans.com/survey

LEARN MORE

National & Local Resources:

www.sbcountyplans.com/learn-more

CONTACT US

Email: info@mosaiccommunityplanning.com

Phone: 404-831-1395



Community Development and Housing Agency
Community Development and Housing

Analysis of Impediments to Fair Housing Choice Project Overview

Mosaic

July 2019

“Taking meaningful actions, in addition to combating discrimination, that overcome patterns of segregation and foster inclusive communities free from barriers that restrict access to opportunity based on protected characteristics”

-HUD AFFH Final Rule



DIVERSE NEIGHBORHOODS PROMOTE UNDERSTANDING AND RESPECT...



AND BEST OF ALL, FRIENDSHIP.

Neighborhood diversity promotes a greater sense of engagement, teaches that stereotypes are wrong and better prepares our children for the global community. When you welcome diversity, you encourage fair housing for all and help to stop housing discrimination.

Learn more about how fair housing promotes diversity at:
www.HUD.gov/fairhousing



A public service message from the U.S. Department of Housing and Urban Development in partnership with the National Fair Housing Alliance. The federal Fair Housing Act prohibits discrimination because of race, color, religion, national origin, sex, family status or disability. For more information, visit www.hud.gov/fairhousing.



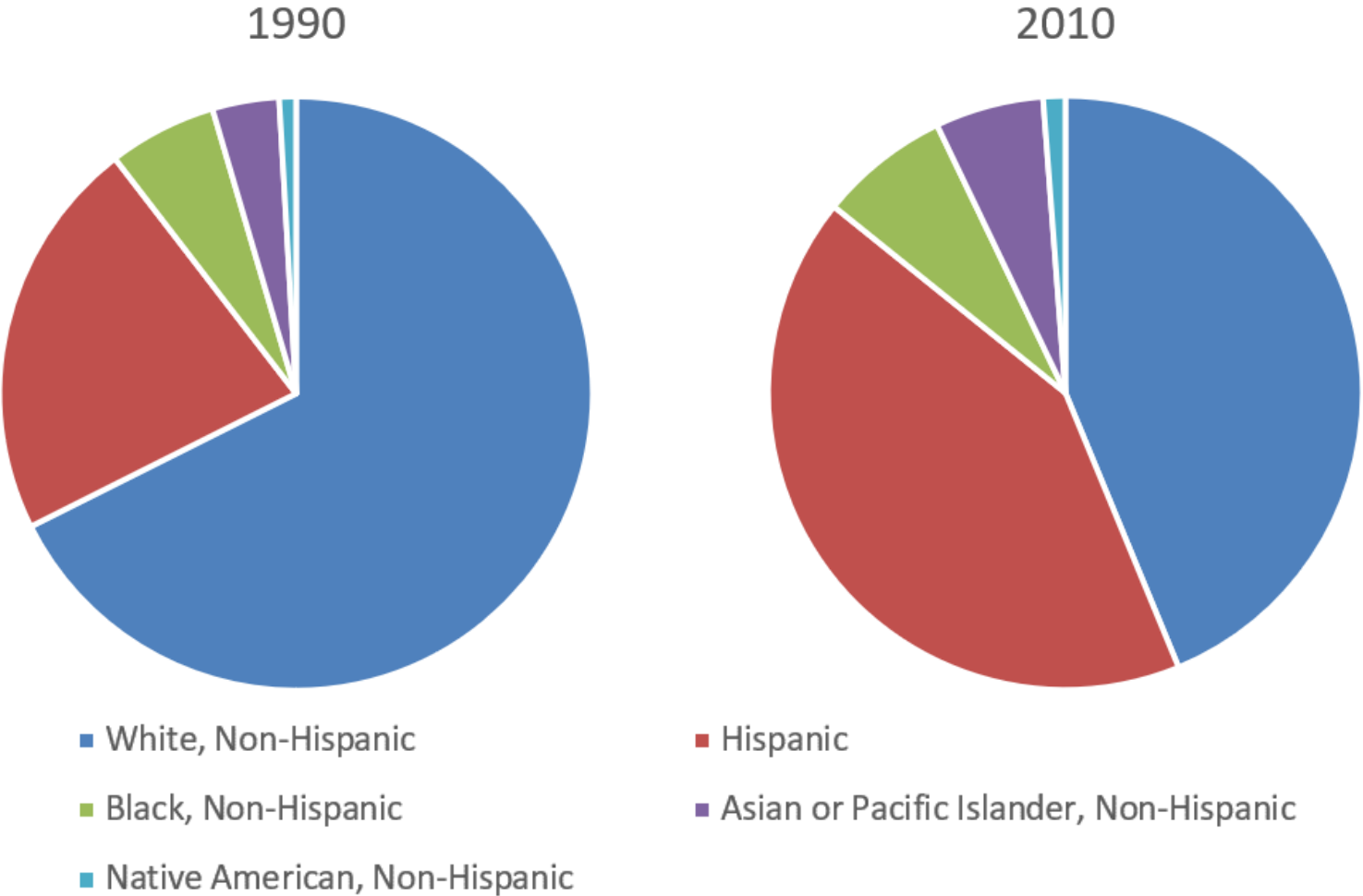
The **County of San Bernardino** and the following Cooperating Cities:

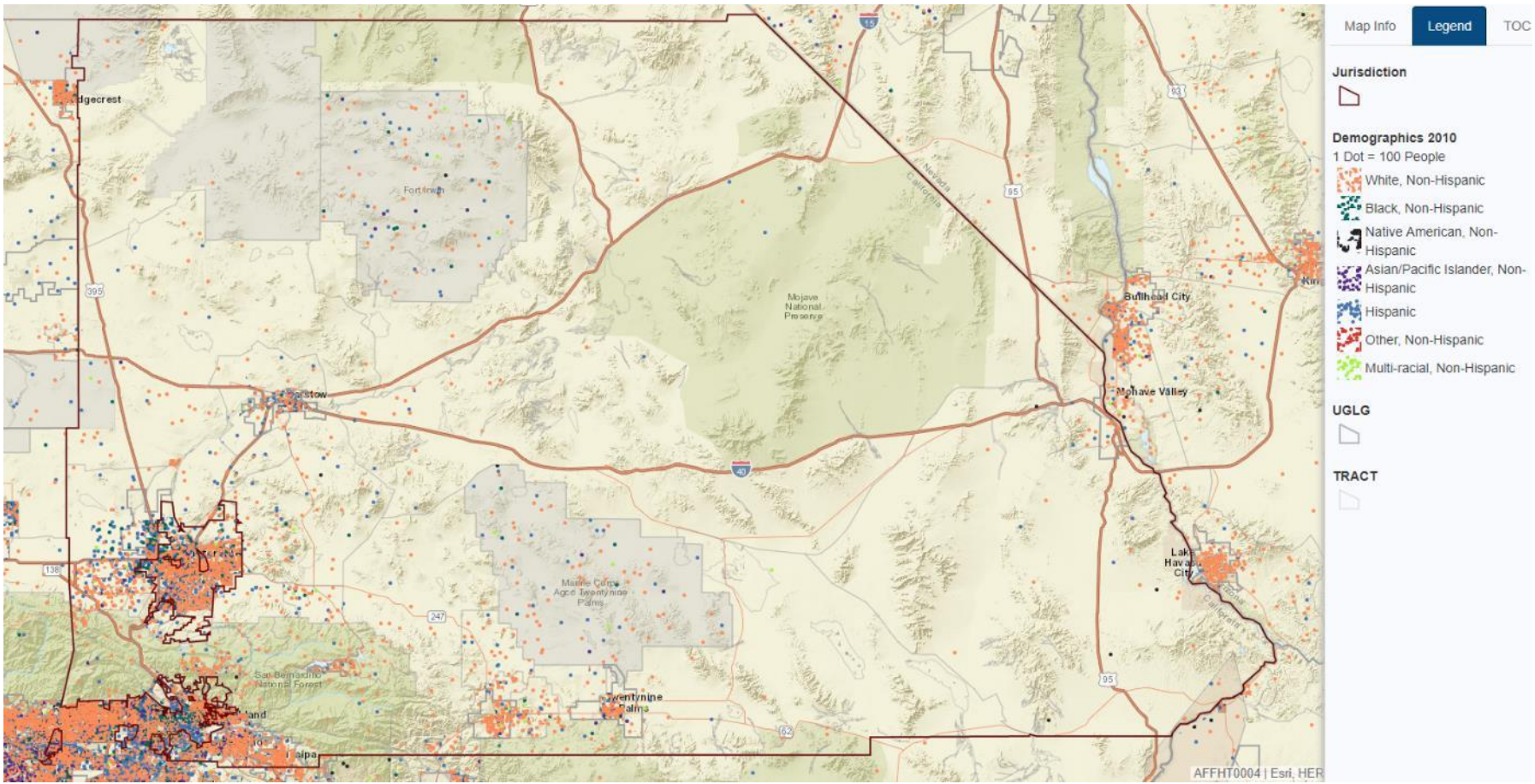
- Adelanto
- Highland
- Twentynine Palms
- Barstow
- Loma Linda
- Yucaipa
- Big Bear Lake
- Montclair
- Town of Yucca Valley
- Chino Hills[†]
- Needles
- Unincorporated areas of San Bernardino County
- Colton
- Rancho Cucamonga[†]
- Grand Terrace
- Redlands

[†] Chino Hills and Rancho Cucamonga participate only in the County's HOME Consortium; they administer their own CDBG programs.

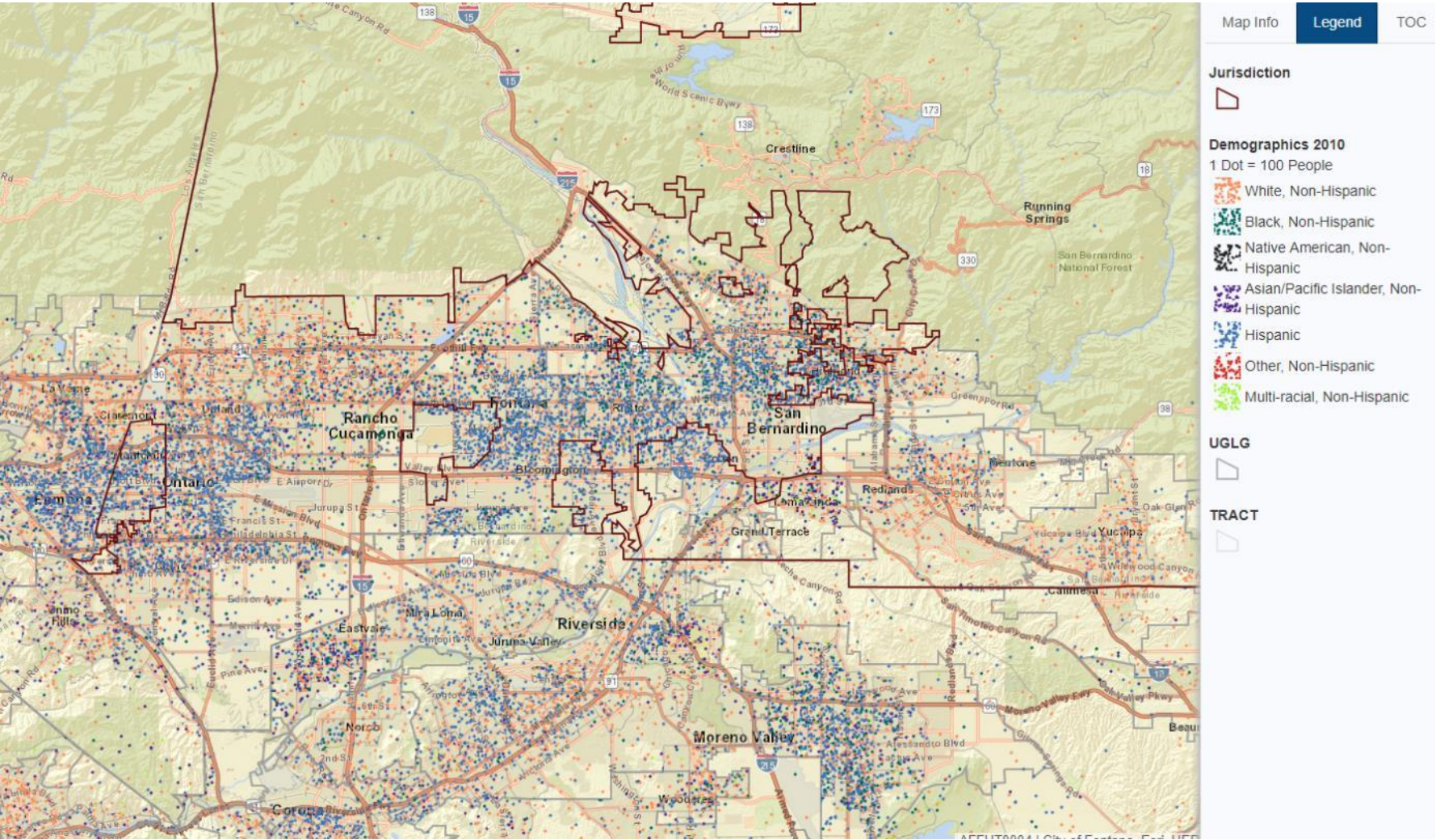
- Analysis of the local fair housing landscape
- Four specific fair housing issues:
 - Integration and segregation
 - Areas of poverty
 - Access to opportunity
 - Housing need
- Fair housing priorities and goals



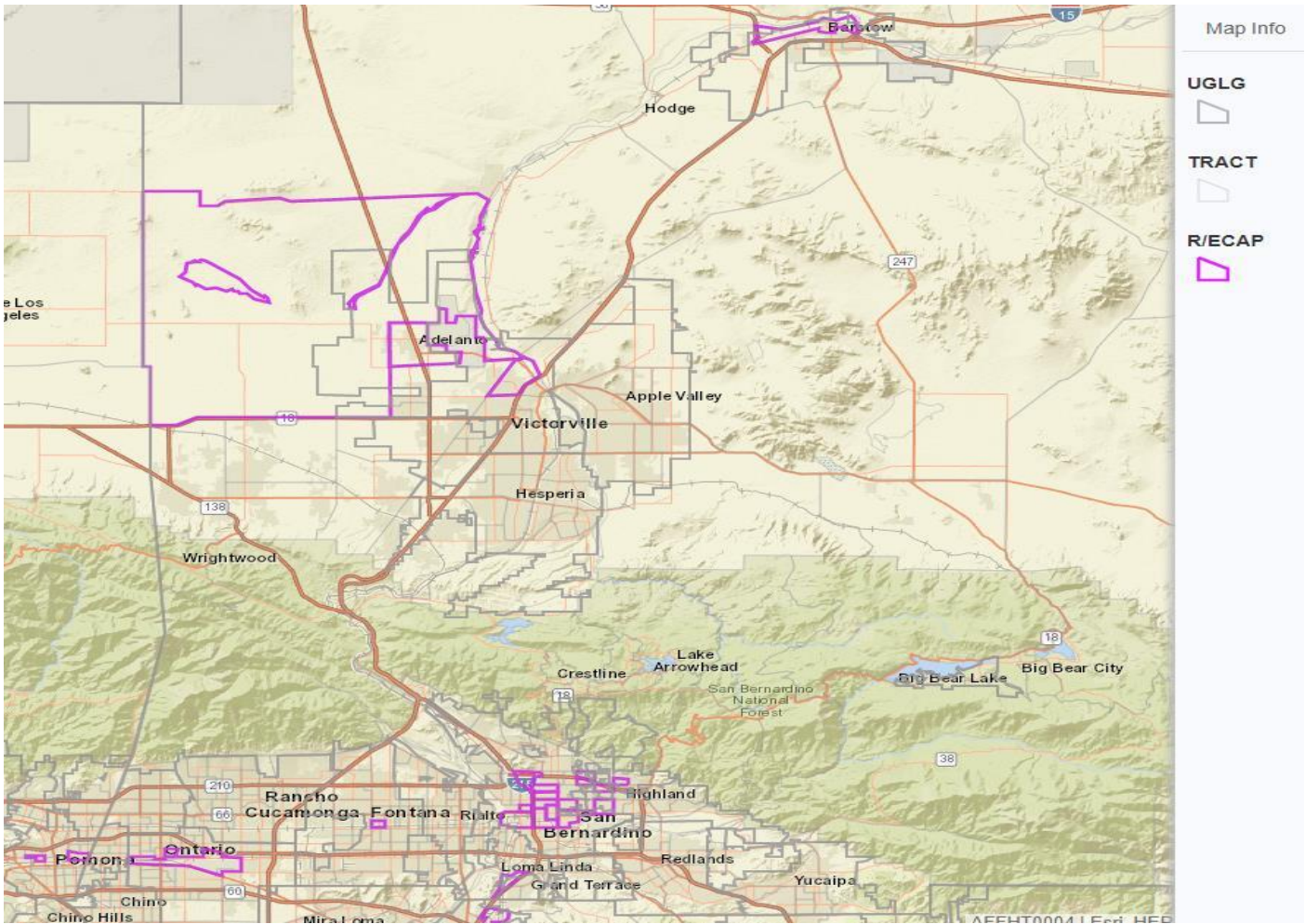




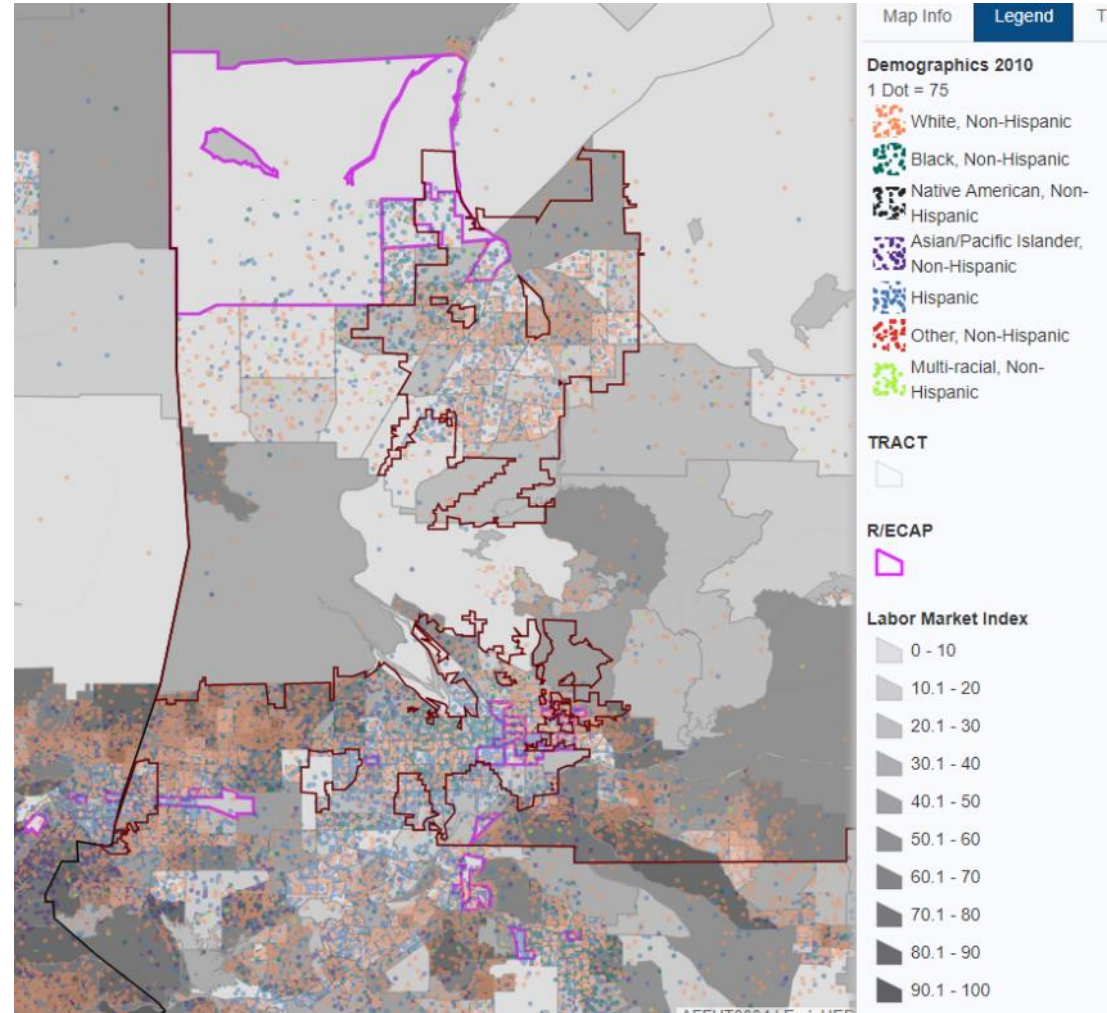
RACIAL & ETHNIC DIVERSITY



RACIALLY & ETHNICALLY CONCENTRATED AREAS OF POVERTY



- Education
- Jobs & labor market engagement
- Transit trips & transportation cost
- Poverty
- Environmental health
- Others?



Disproportionate Housing Needs	San Bernardino County	Riverside/ San Bernardino/ Ontario Region
Race/Ethnicity		
White, Non-Hispanic	37.4%	40.4%
Black, Non-Hispanic	57.3%	58.3%
Hispanic	56.1%	58.9%
Asian or Pacific Islander, Non-Hispanic	43.5%	49.0%
Native American, Non-Hispanic	43.9%	49.0%
Total	45.0%	49.2%
Household Type and Size		
Family households, <5 People	39.3%	43.5%
Family households, 5+ People	62.6%	64.6%
Non-family households	45.8%	50.0%



Gather **community input** through community workshops, individual interviews, and surveys (July-August)

Analyze data and community input to identify **fair housing barriers**. Prepare recommendations to address barriers. (August-September)

Present **draft report** for public review and comment (January-February).

Prepare **final report** for local approval (March).

TAKE THE SURVEY

www.sbcountyplans.com/survey

LEARN MORE

HUD's Interactive Maps & Data: <https://egis.hud.gov/affht/>
National & Local Resources: www.sbcountyplans.com/learn-more

CONTACT US

Email: info@mosaiccommunityplanning.com

Phone: 404-831-1395

SHARE WITH OTHERS