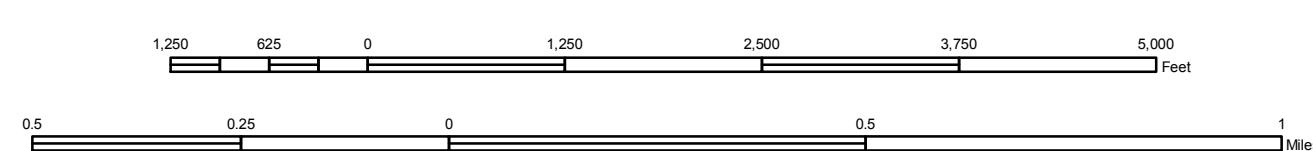


See FH07 C

See FH01 C

San Bernardino County Land Use Plan
GENERAL PLAN
 Geologic Hazard Overlays

SCALE 1:14,400



Generalized Landslide Susceptibility

- Low to moderate
- Moderate to high
- Mapped, Existing Landslide
- Rockfall/Debris-Flow Hazard Area (Forest Falls Only)

Map data originally compiled on 1:48,000 scale mosaic aerial maps photoreduced from 7-1/2 minute USGS quadrangle maps by D.M. Morton, U.S. Geological Survey, 1974 and by S.S. Tan, State Division of Mines and Geology, 1980.

Positional accuracy of map data is at best plus or minus 150 feet.

Zone of Suspected Liquefaction Susceptibility

- Zone of Susceptibility

The Zone of Suspected Liquefaction Susceptibility layer compiled by the San Bernardino County Geologist, 2008.

Positional accuracy of map data is at best plus or minus 200 feet.

Generalized Liquefaction Susceptibility

- Low
- Medium
- High

Map data originally compiled on 1:48,000 scale mosaic aerial maps photoreduced from 7-1/2 minute USGS quadrangle maps by E. Mann and S.E. Carlson, 1986.

Positional accuracy of map data is at best plus or minus 150 feet.

Earthquake Fault Zones

- Earthquake Fault Zone Boundary
- County Designated Fault Zones

Map data compiled on 7-1/2 and 15-minute USGS quadrangle maps by the State of California, Division of Mines and Geology, 1987.

Positional accuracy of map data is at best plus or minus 150 feet.

NOTICE: Effective January 1, 1994, the name "Special Studies Zones" has been changed to "Earthquake Fault Zones" and Chap. 7.3, Div. 2 of the Public Resources Code has been renamed the "Acquired-Private Earthquake Fault Zoning Act".

Cities

