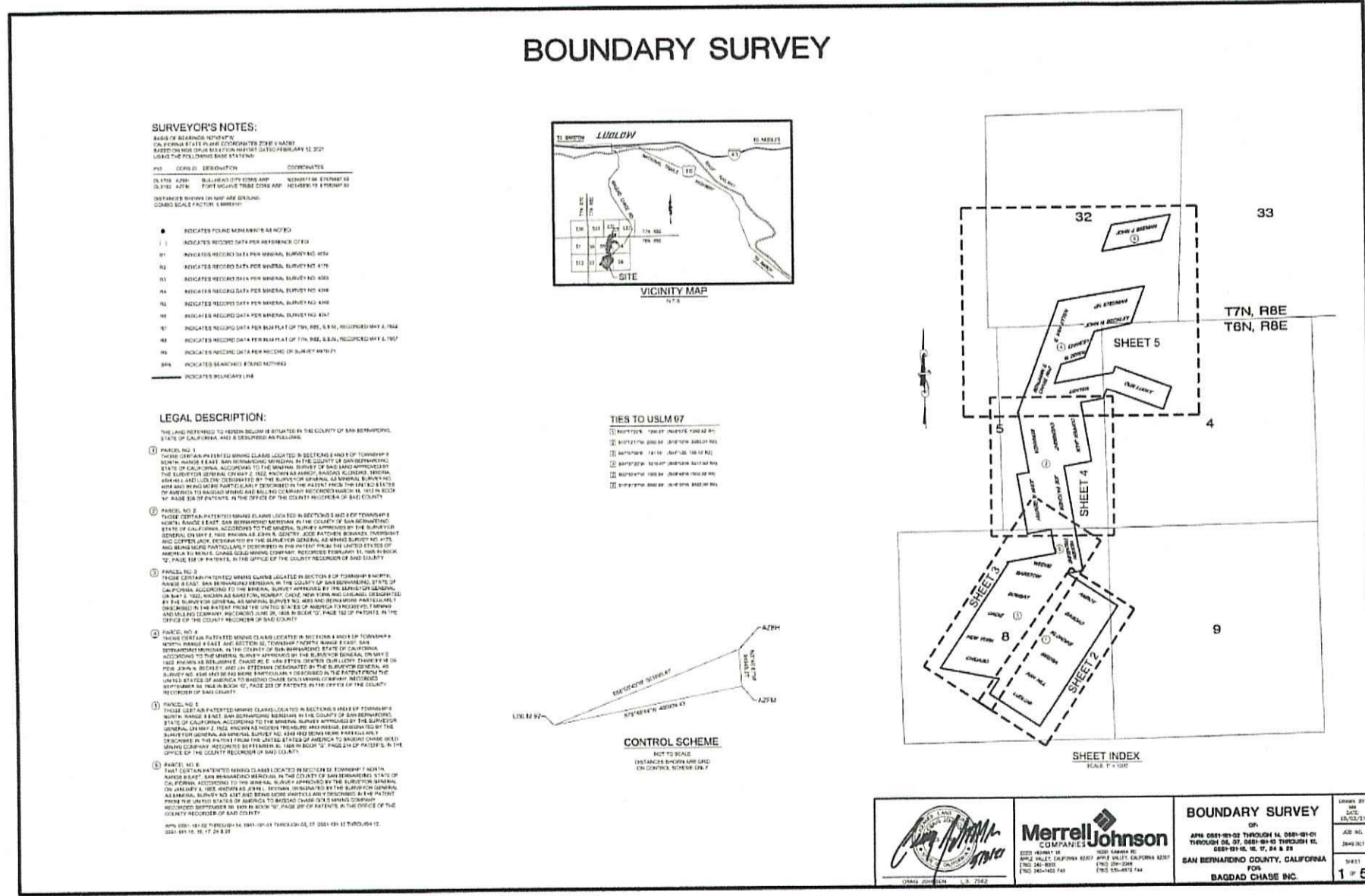


- LEGEND**
- EXISTING TOPOGRAPHY
 - POST MINE TOPOGRAPHY
 - OOPS (OUT OF PIT SPOILS)
 - PHASE 01 PIT SHELL
 - PHASE 02 PIT SHELL
 - PHASE 03 PIT SHELL
 - PHASE 04 PIT SHELL
 - CROSS SECTION INFORMATION

LILBURN CORPORATION
1923 Business Center Drive San Bernardino, CA 92408
909.890.1818 Fax: 909.890.1807

John S. McKeown
John S. McKeown, C.E.G. 2396
Senior Geologist

Subject Matter Expert: Brian J. Williams, P.E., P.G.



CRAIG JOHNSON
L.S. 7562
FOR BOUNDARY AND TOPOGRAPHY

Craig Johnson
8/20/21

BRAD S. MERRELL
R.C.E. 49423

Brad S. Merrell
8-20-2021

MerrellJohnson COMPANIES

22221 HIGHWAY 18
APPLE VALLEY, CALIFORNIA 92307
(760) 240-8000
(760) 240-1400 FAX

16291 KAMANA RD
APPLE VALLEY, CALIFORNIA 92307
(760) 256-2068
(760) 530-6672 FAX

Cross Section and Details
BAGDAD CHASE MINE
 RECLAMATION PLAN No. #####
 SAN BERNARDINO COUNTY, CALIFORNIA



SHEET INDEX

1. TITLE
2. RECLAMATION PLAN
3. MINE PLAN
4. RECLAMATION DESIGN
5. PFT SECTIONS AND PHASING
Date: August 12, 2021
Version: State Draft (V5)

SHEET: 4 of 4