

## **APPENDIX C**

### **Referenced Figures**

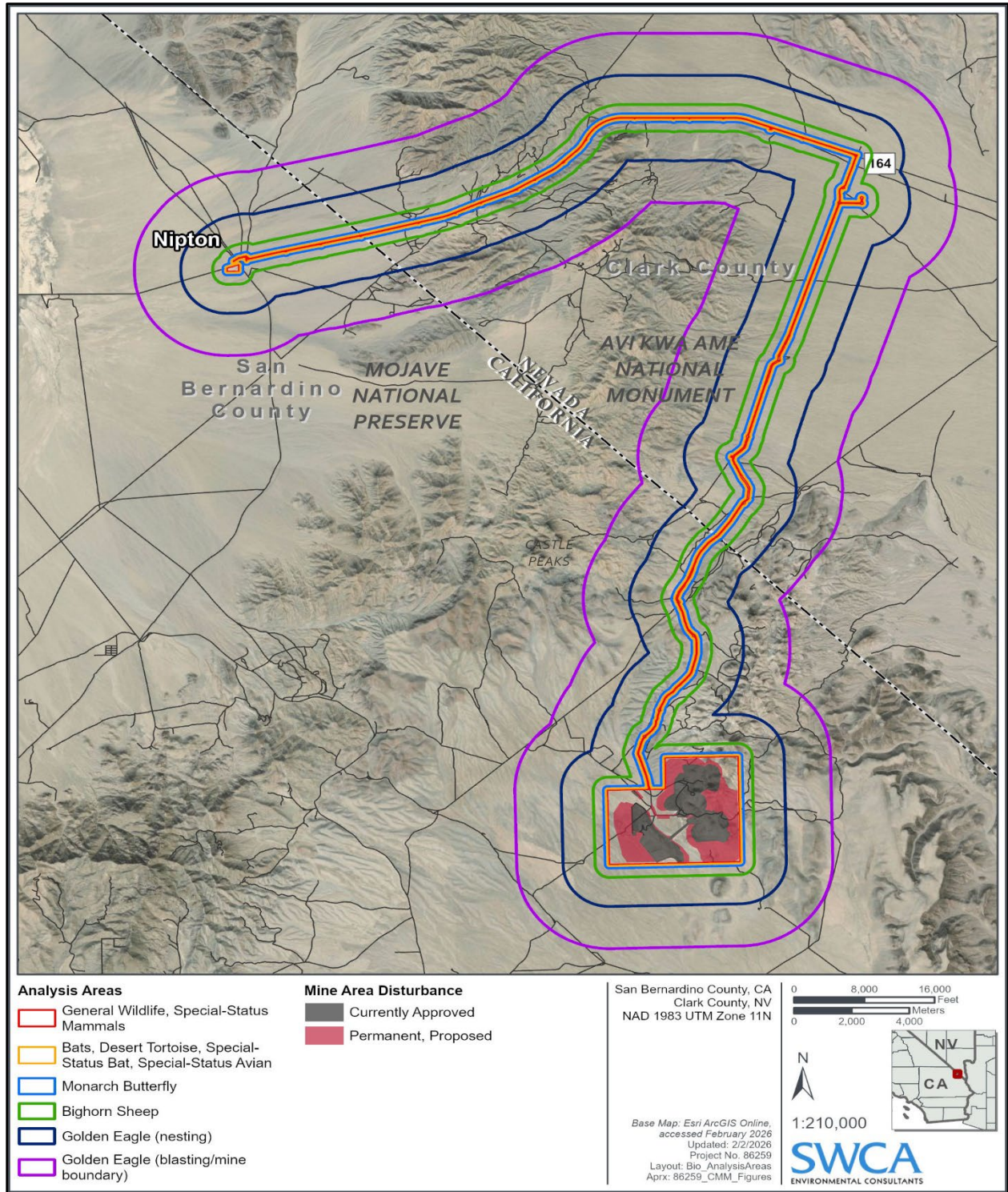


Figure C.3.6-1. Special Status Wildlife Species in the Biological Resources Analysis Area

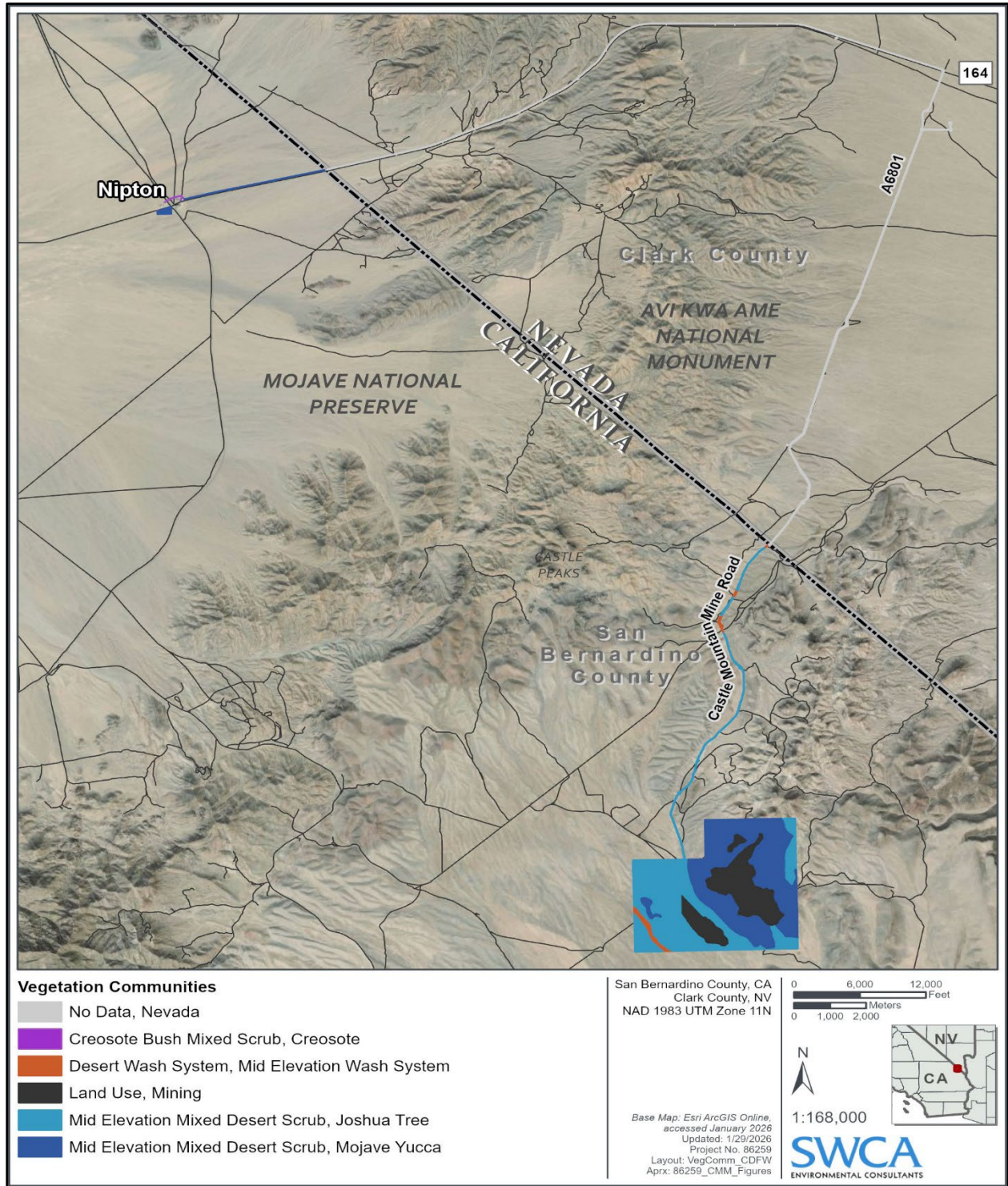


Figure C.3.6-2. Vegetation Communities in the Biological Resources Analysis Area

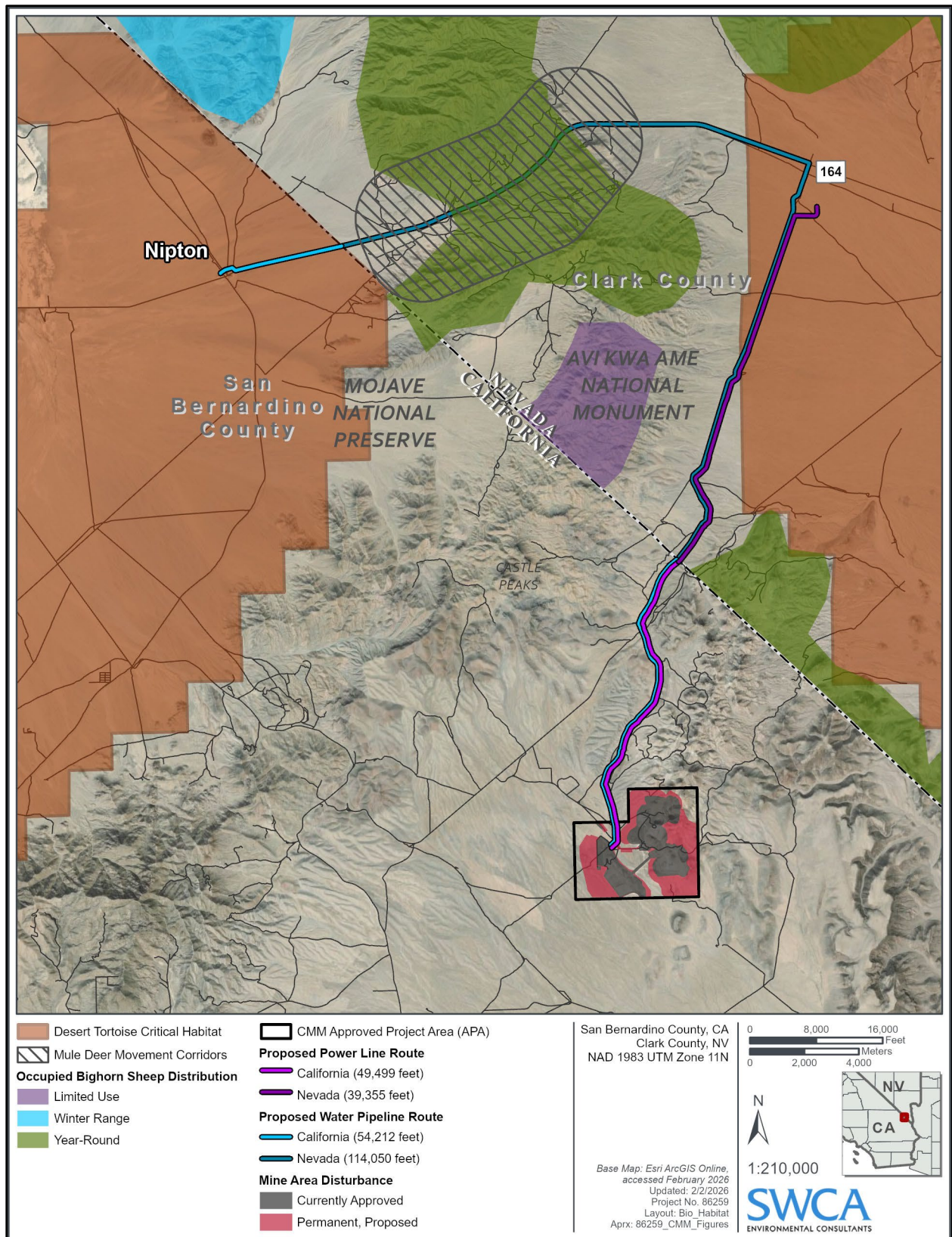


Figure C.3.6-3. Special-Status Wildlife Species Analysis Area

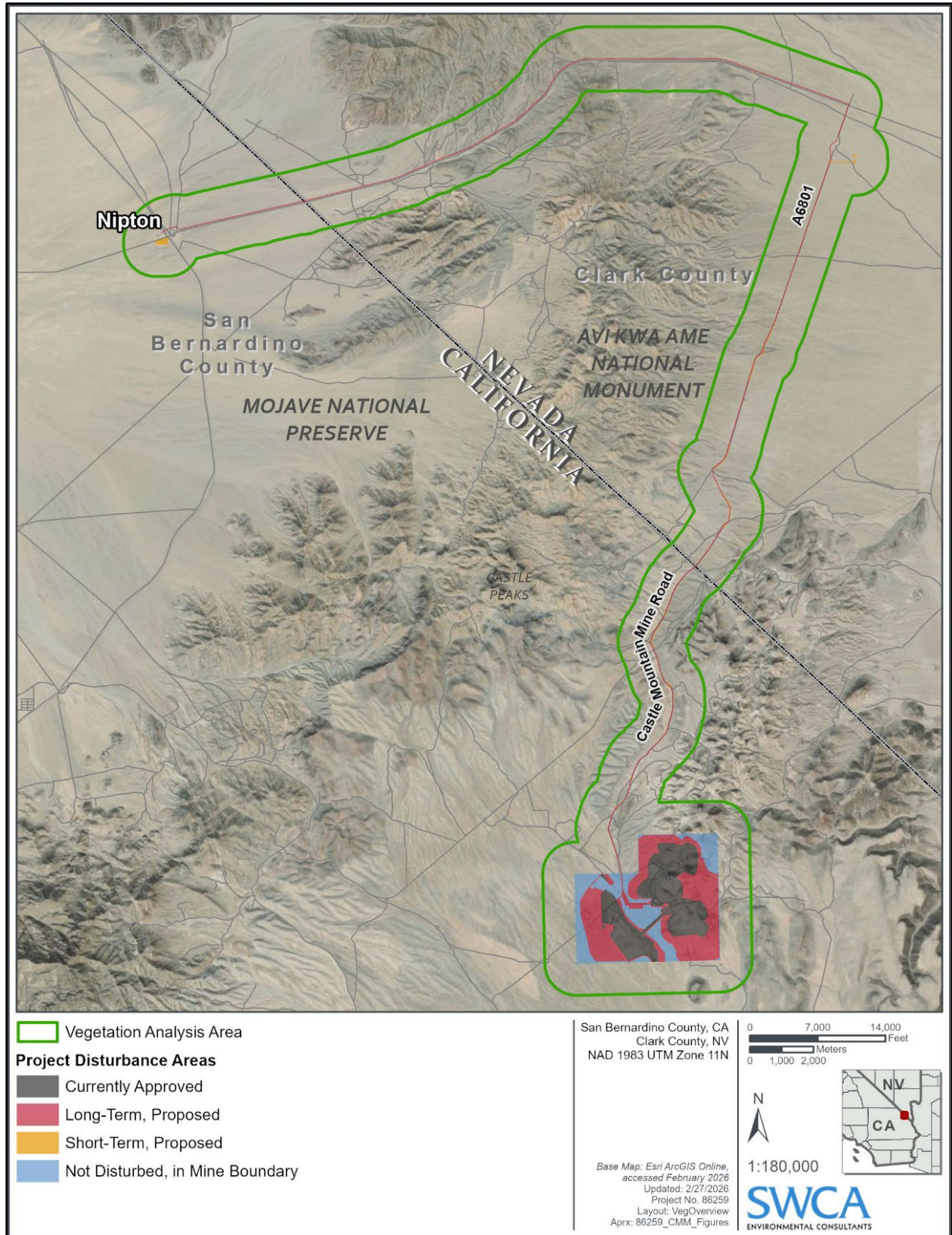


Figure C.3.6-4. Special Status Species Habitat Assessment Analysis Area

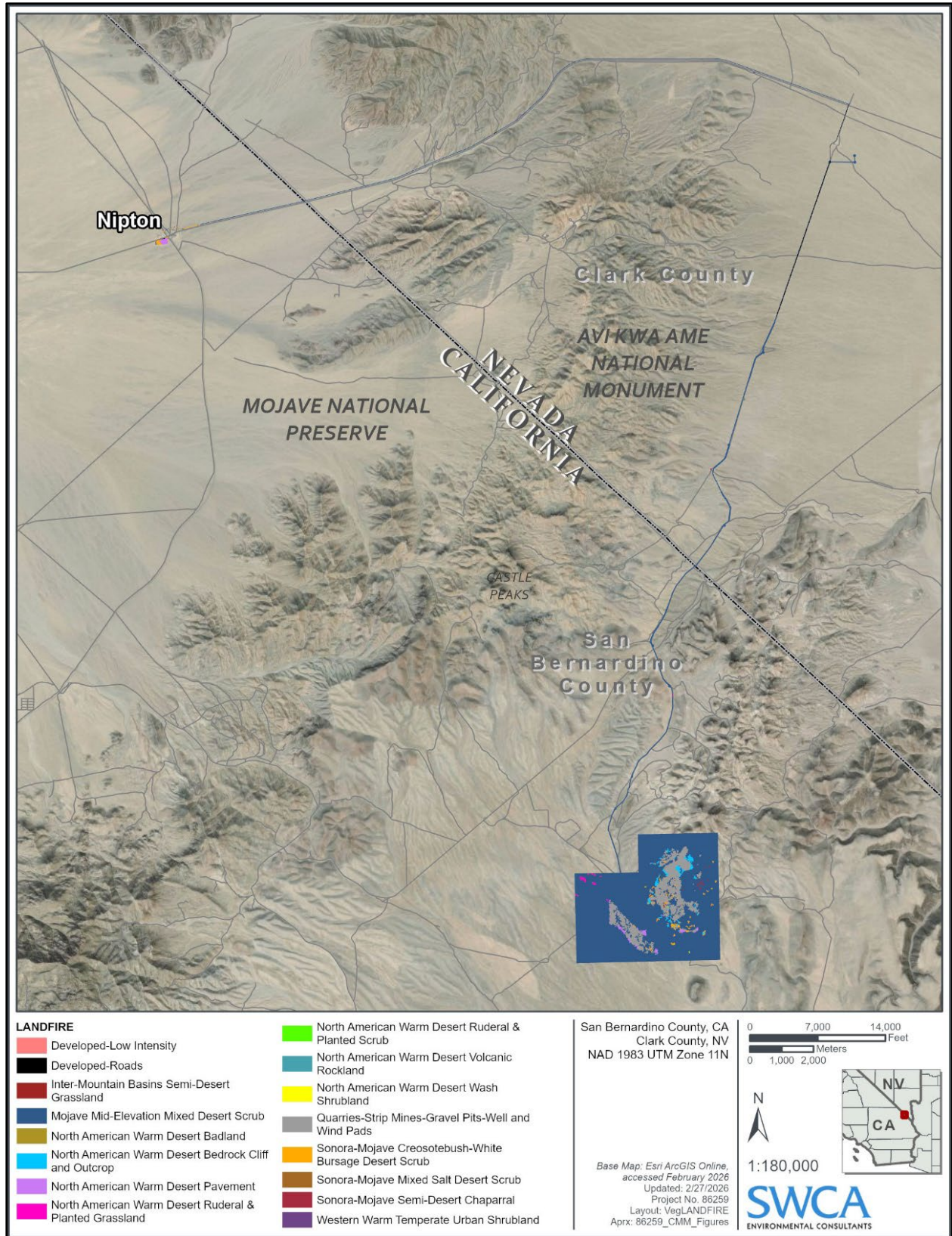


Figure C.3.6-5. Landfire Land Cover Classes in the Analysis Area

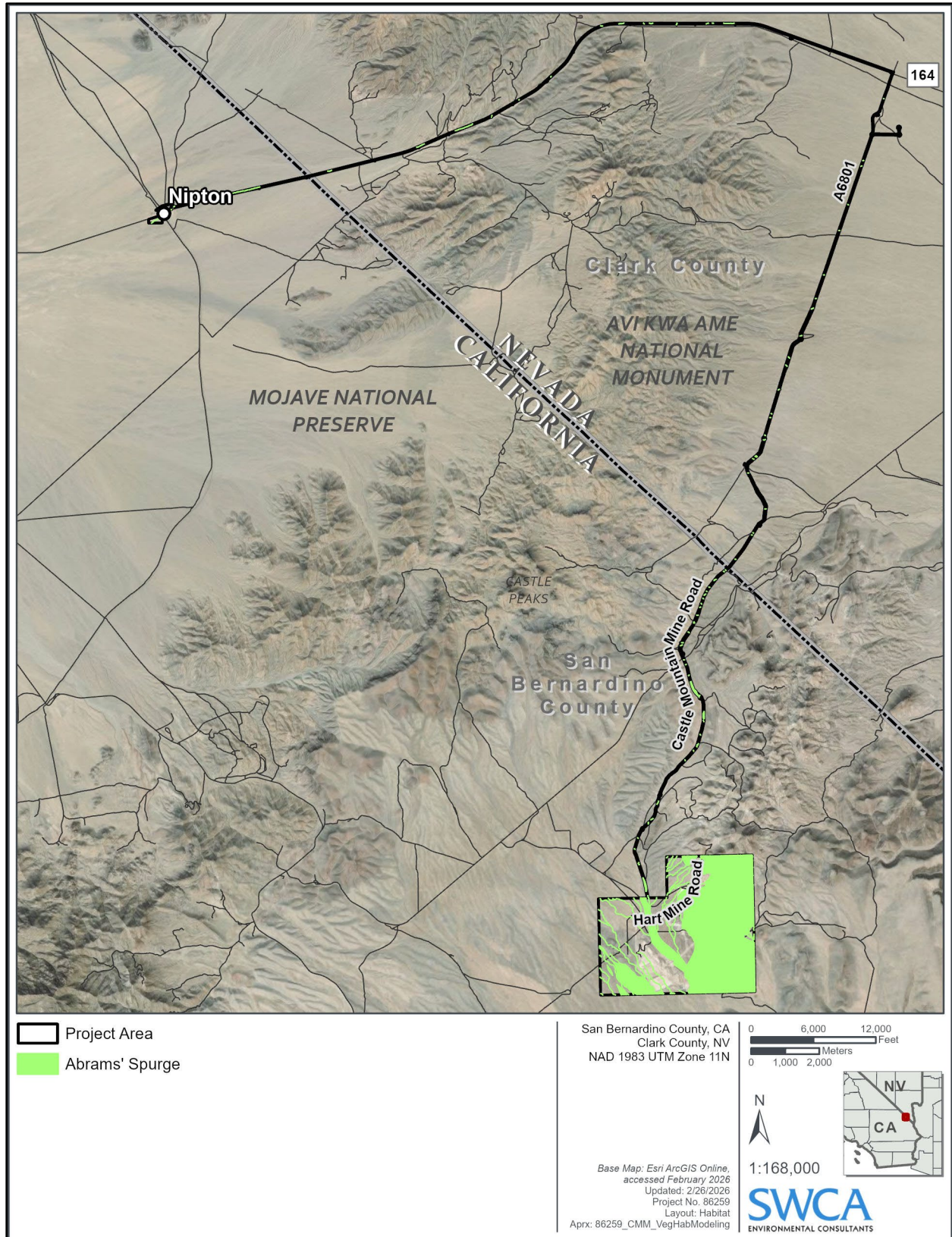


Figure C.3.6-6. Potential Abrams' Spurge Habitat within the Analysis Area

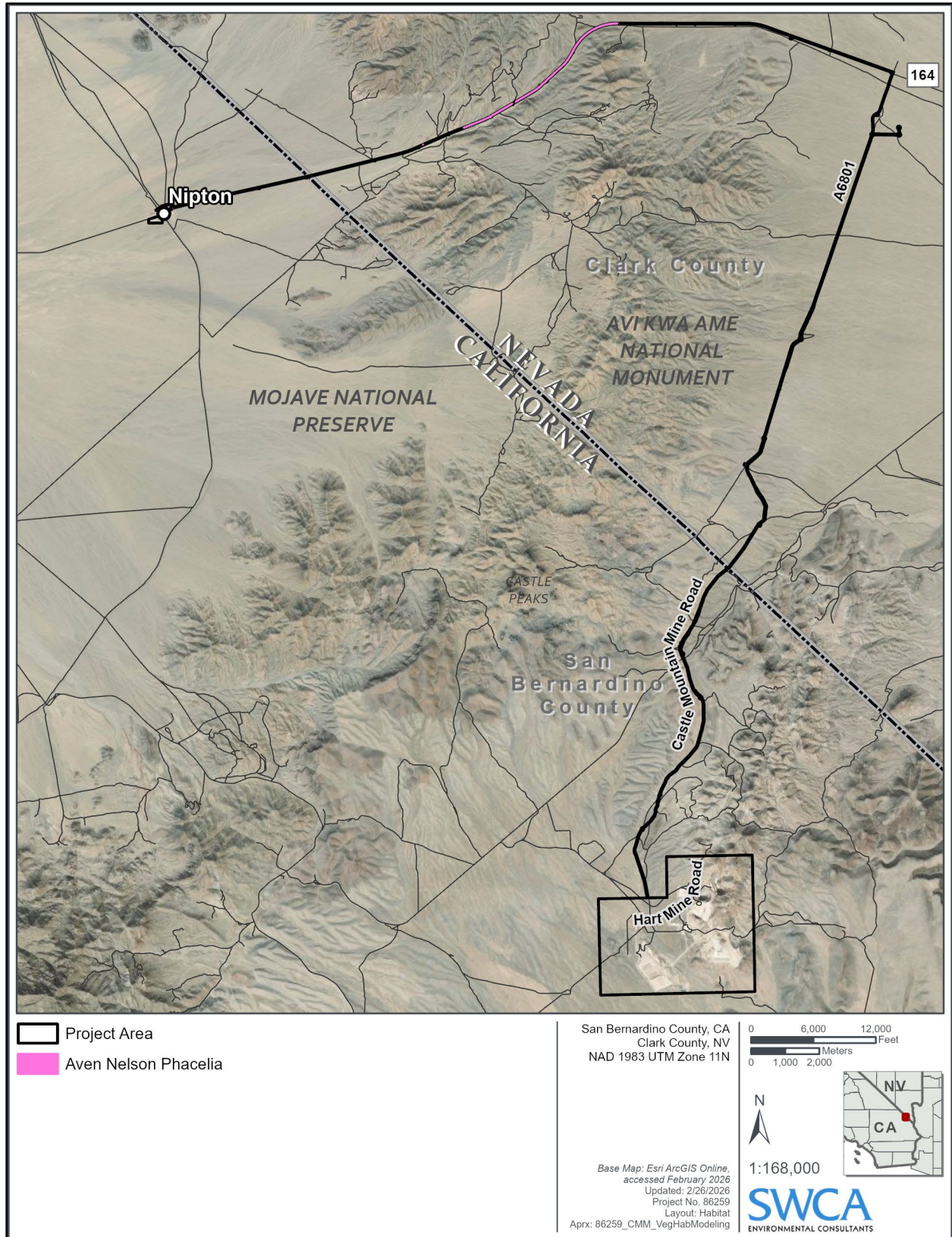


Figure C.3.6-7. Potential Aven Nelson Phacelia Habitat within the Analysis Area

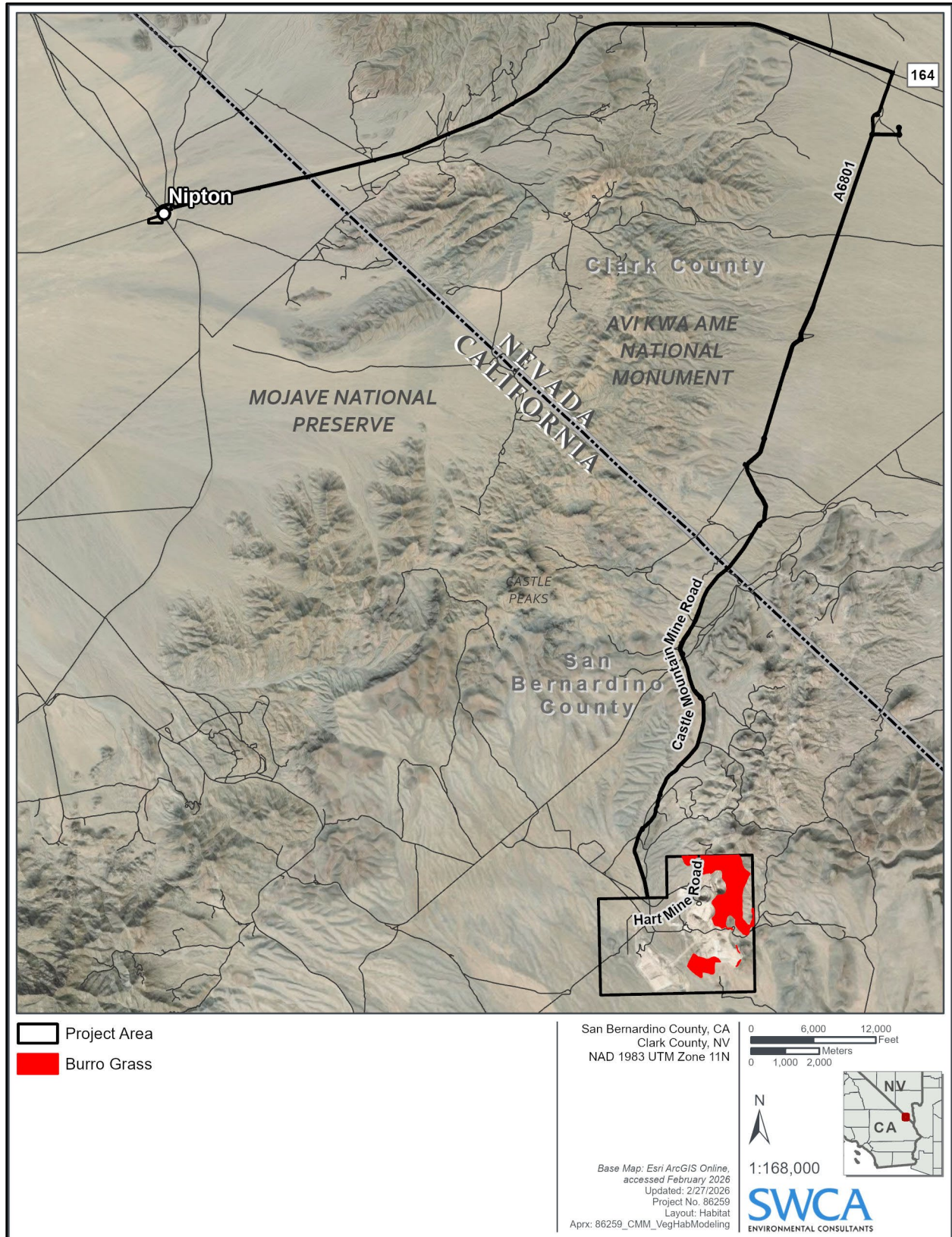


Figure C.3.6-8. Potential Burro Grass Habitat within the Analysis Area

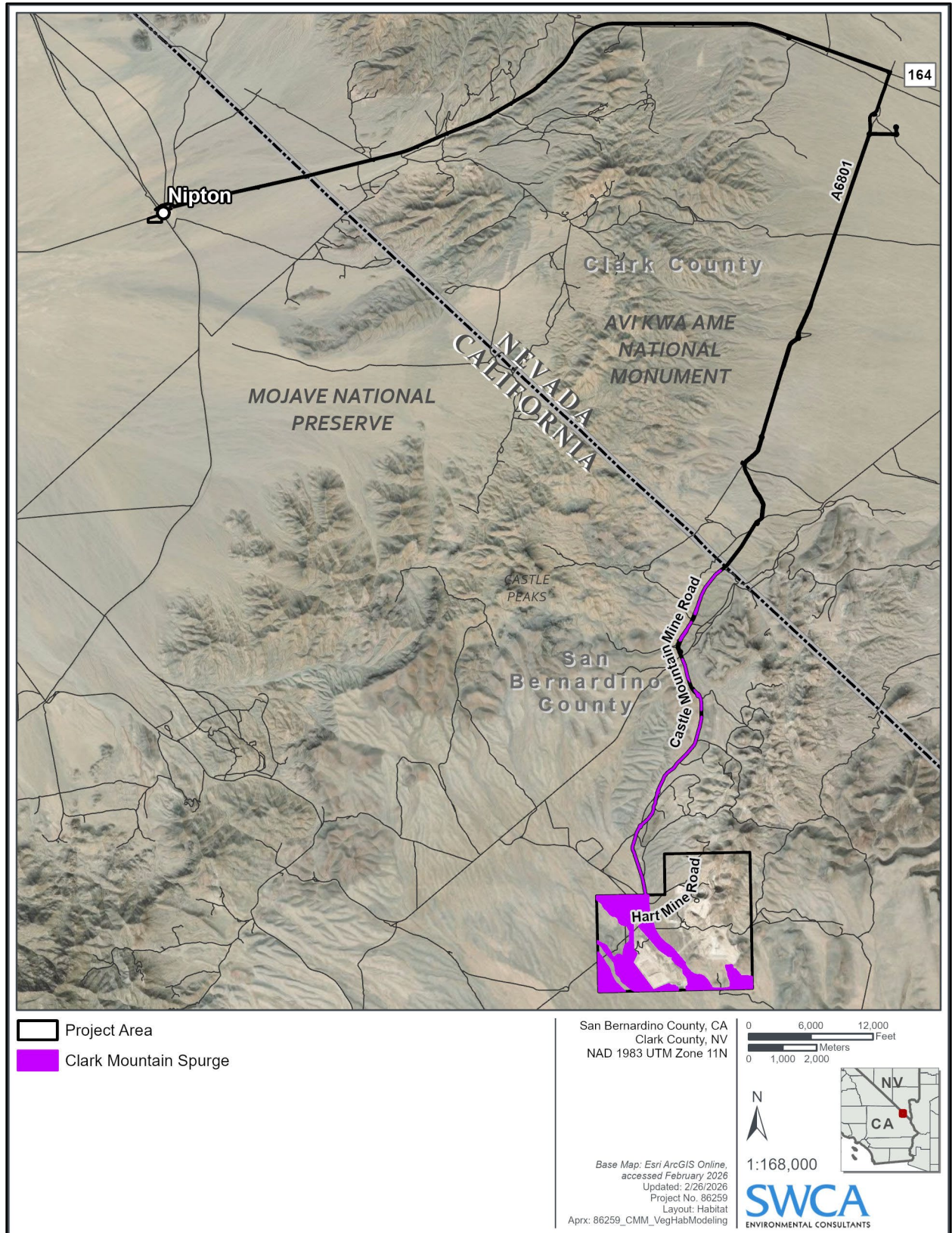


Figure C.3.6-9. Potential Clark Mountain Spurge Habitat within the Analysis Area

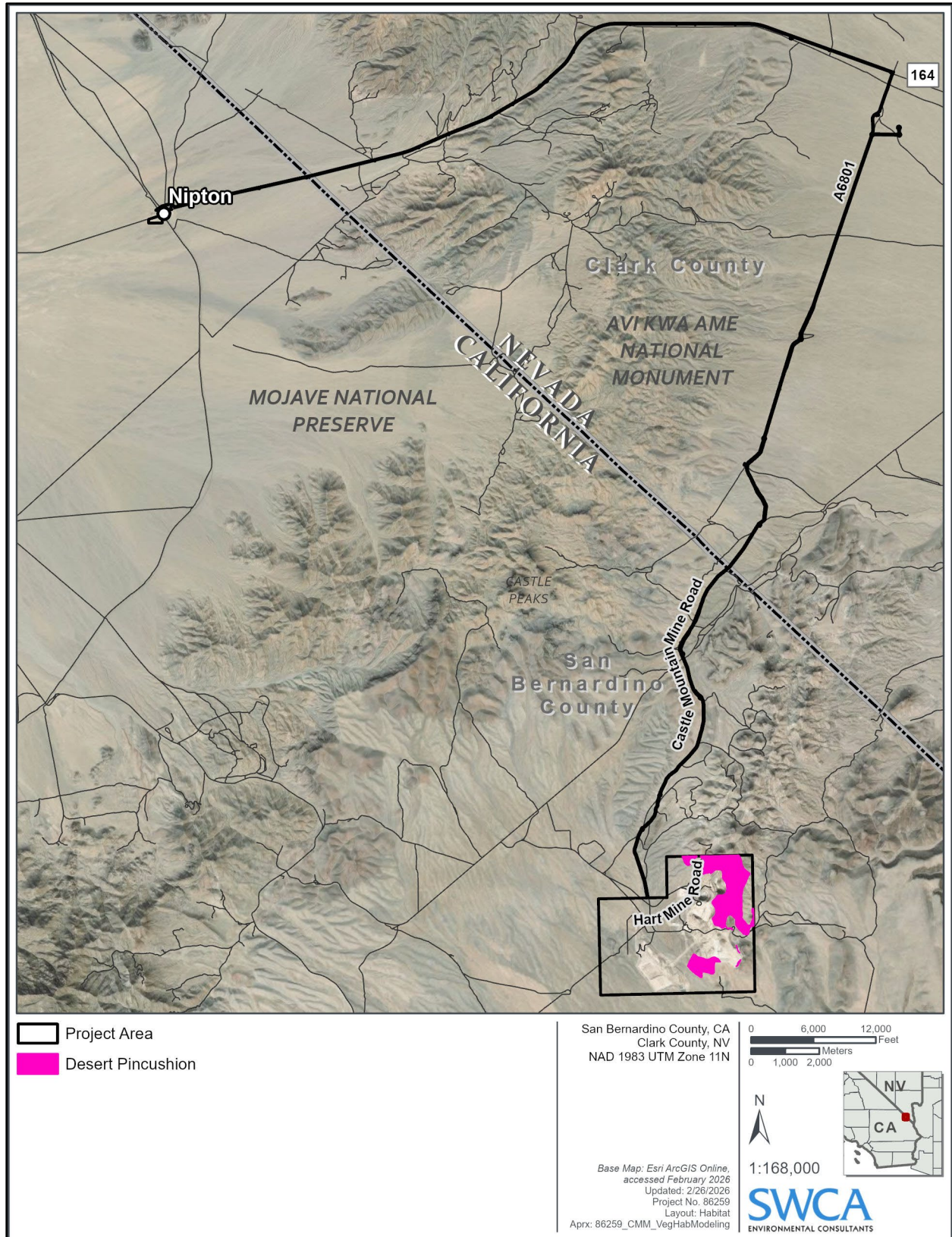


Figure C.3.6-10. Potential Desert Pincushion Habitat within the Analysis Area

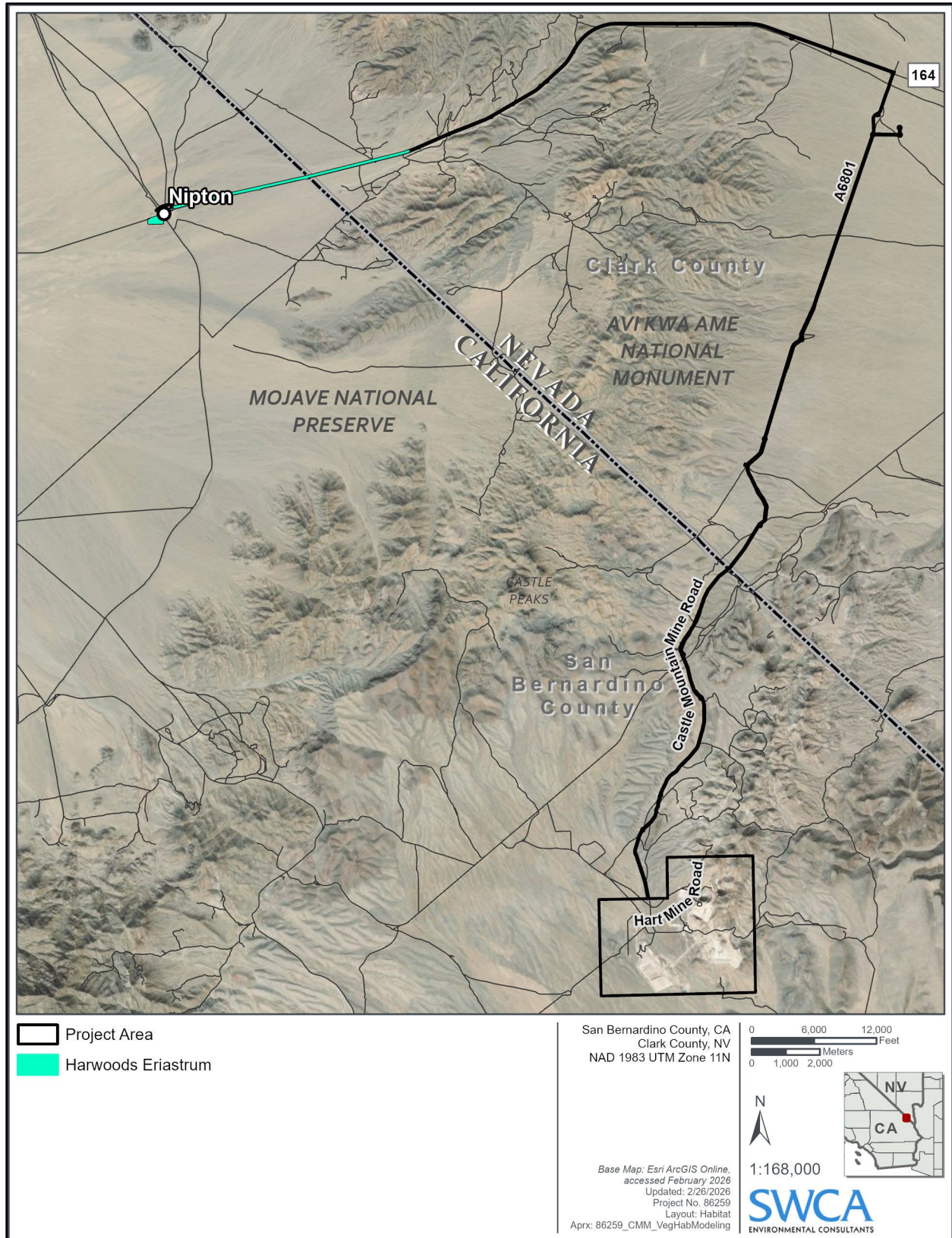


Figure C.3.6-11. Potential Hardwoods Eriastrum Habitat within the Analysis Area

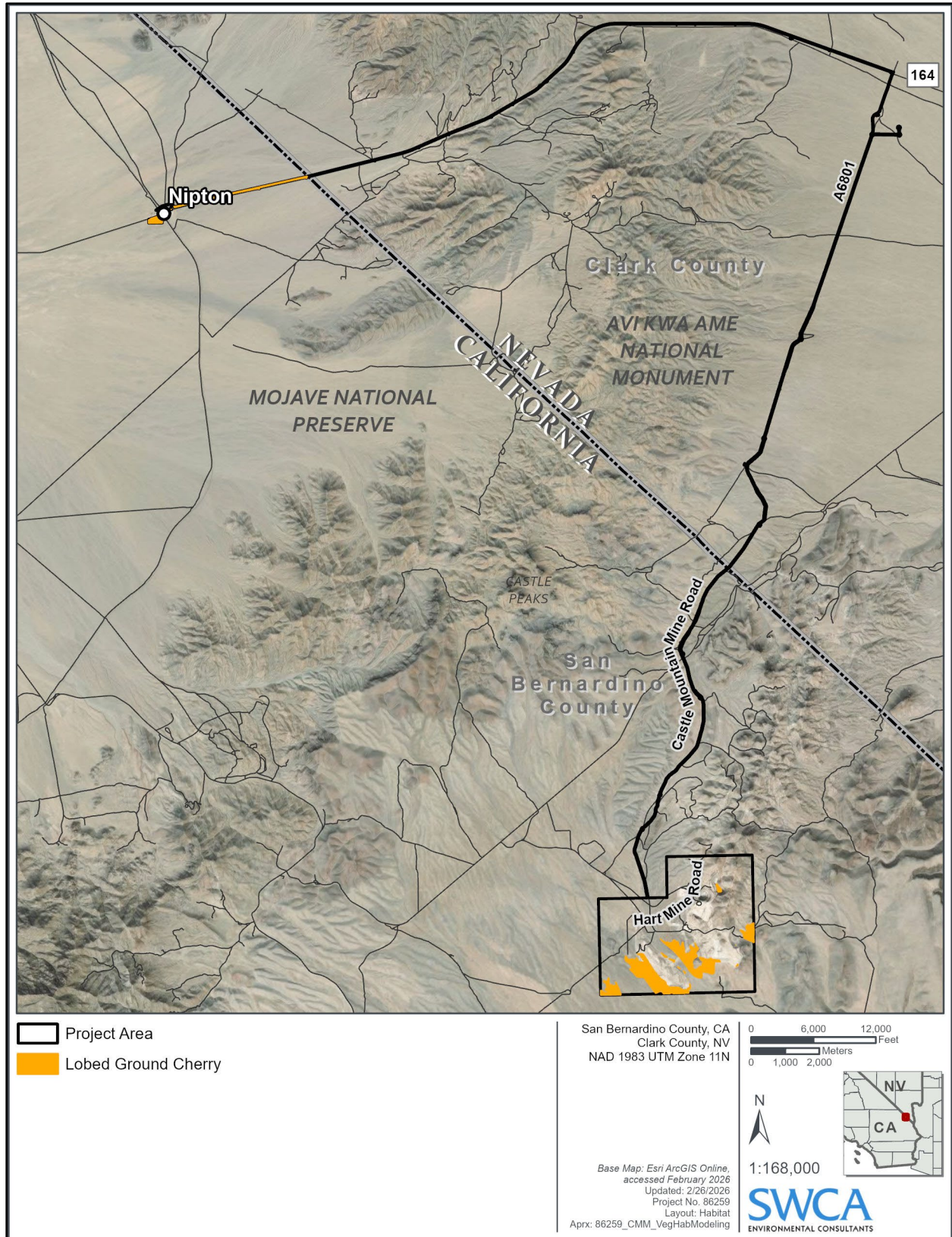


Figure C.3.6-12. Potential Lobed Ground Cherry Habitat within the Analysis Area

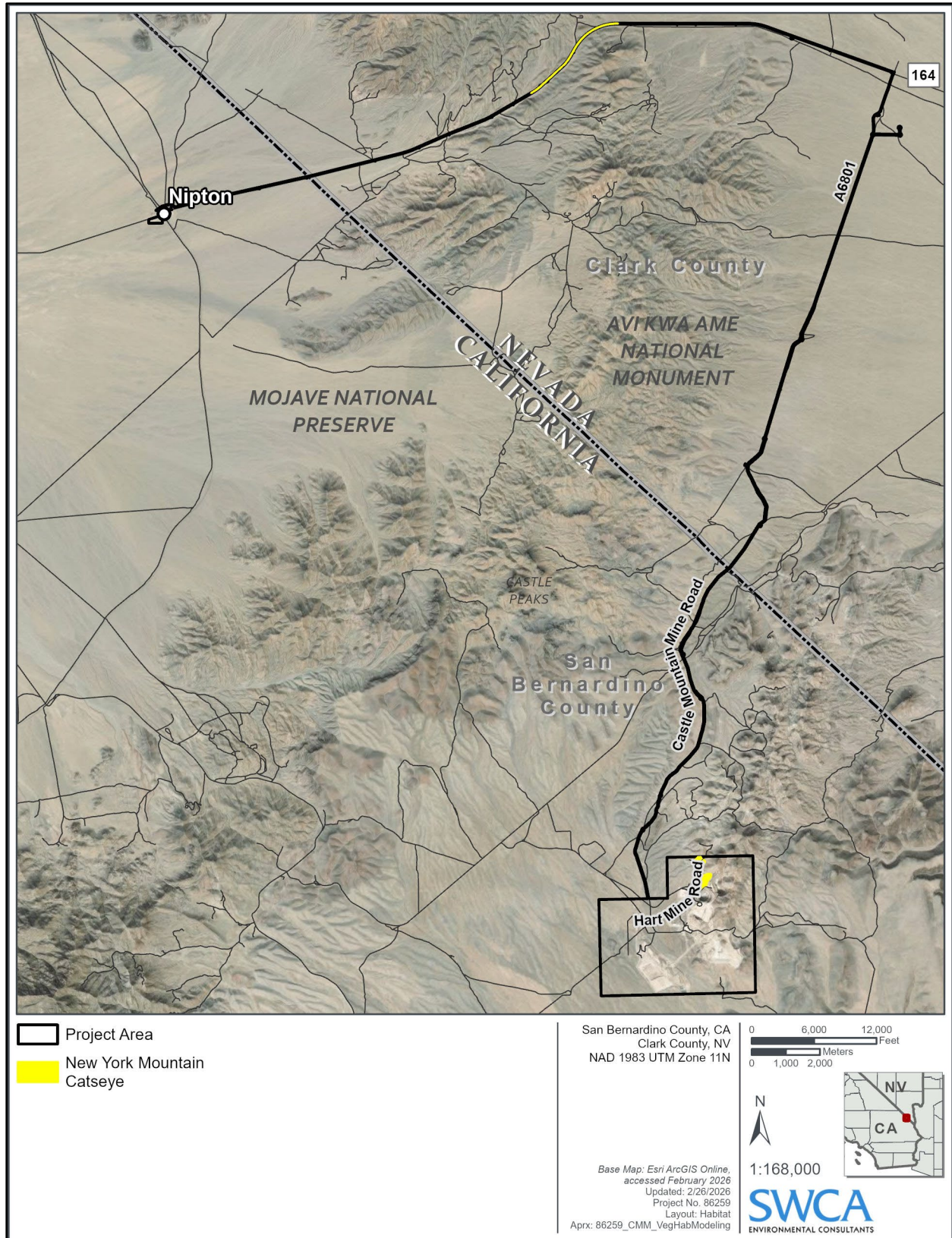


Figure C.3.6-13. Potential New York Mountain Catseye Habitat within the Analysis Area

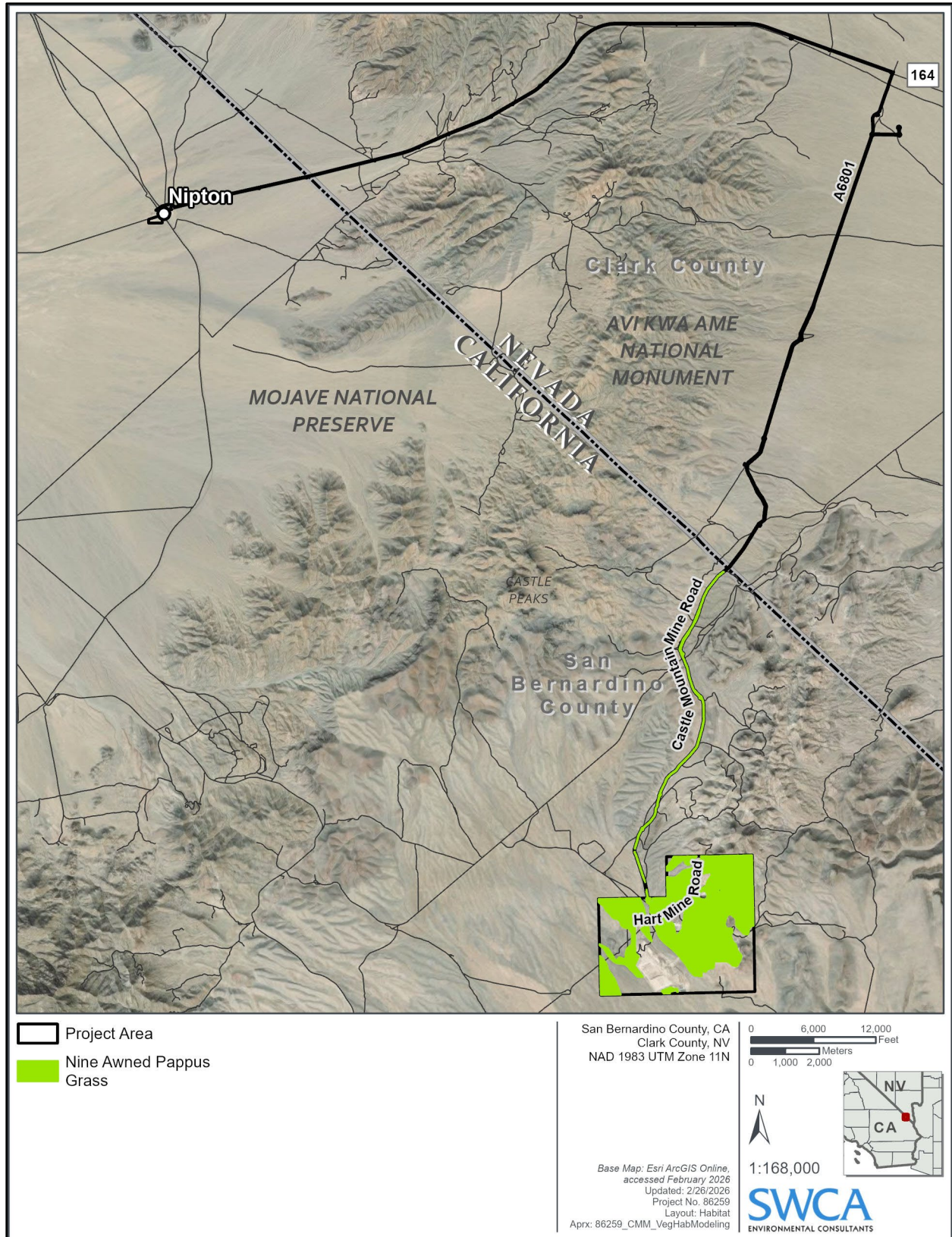


Figure C.3.6-14. Potential Nine Awned Pappus Grass Habitat within the Analysis Area

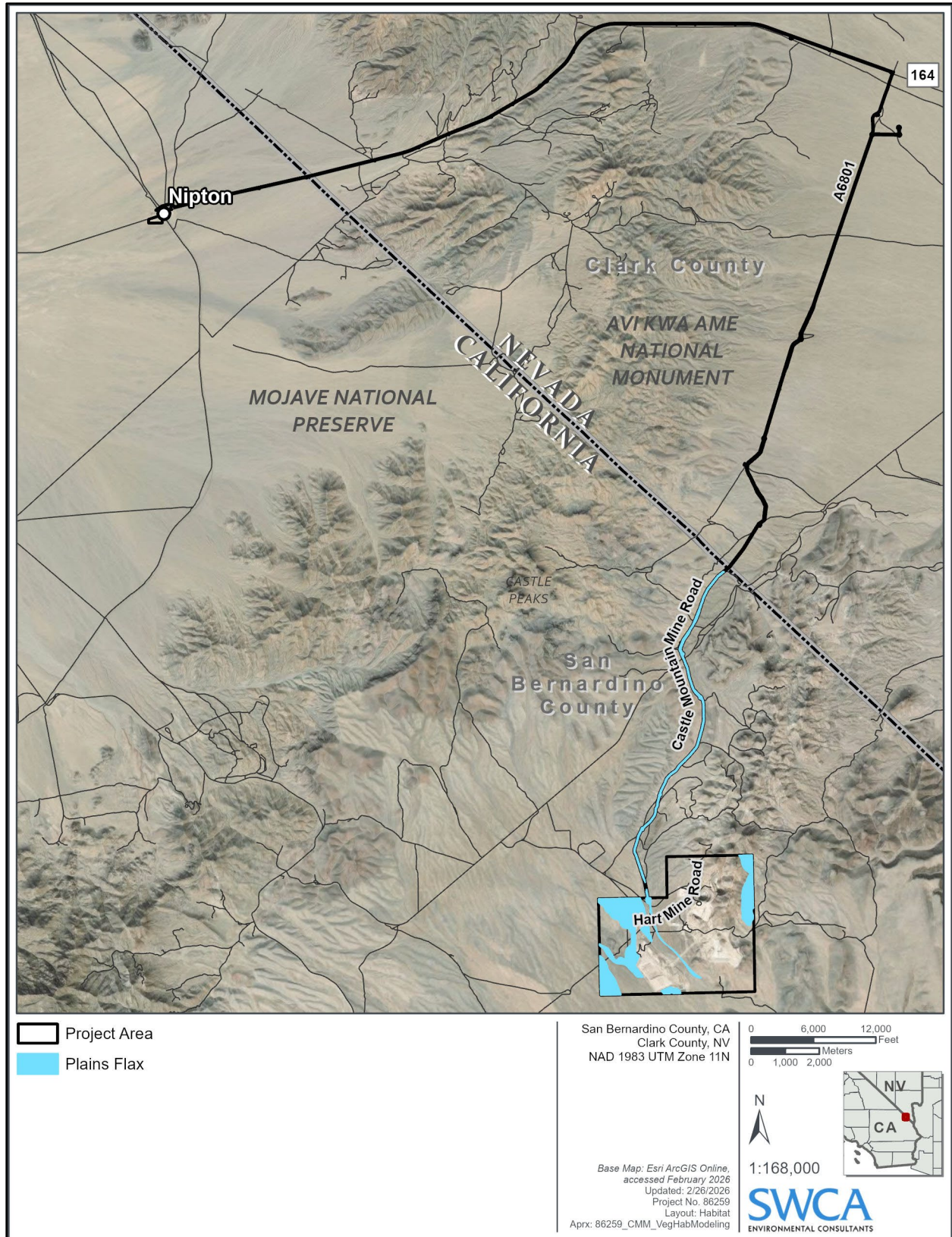


Figure C.3.6-15. Potential Plains Flax Habitat within the Analysis Area

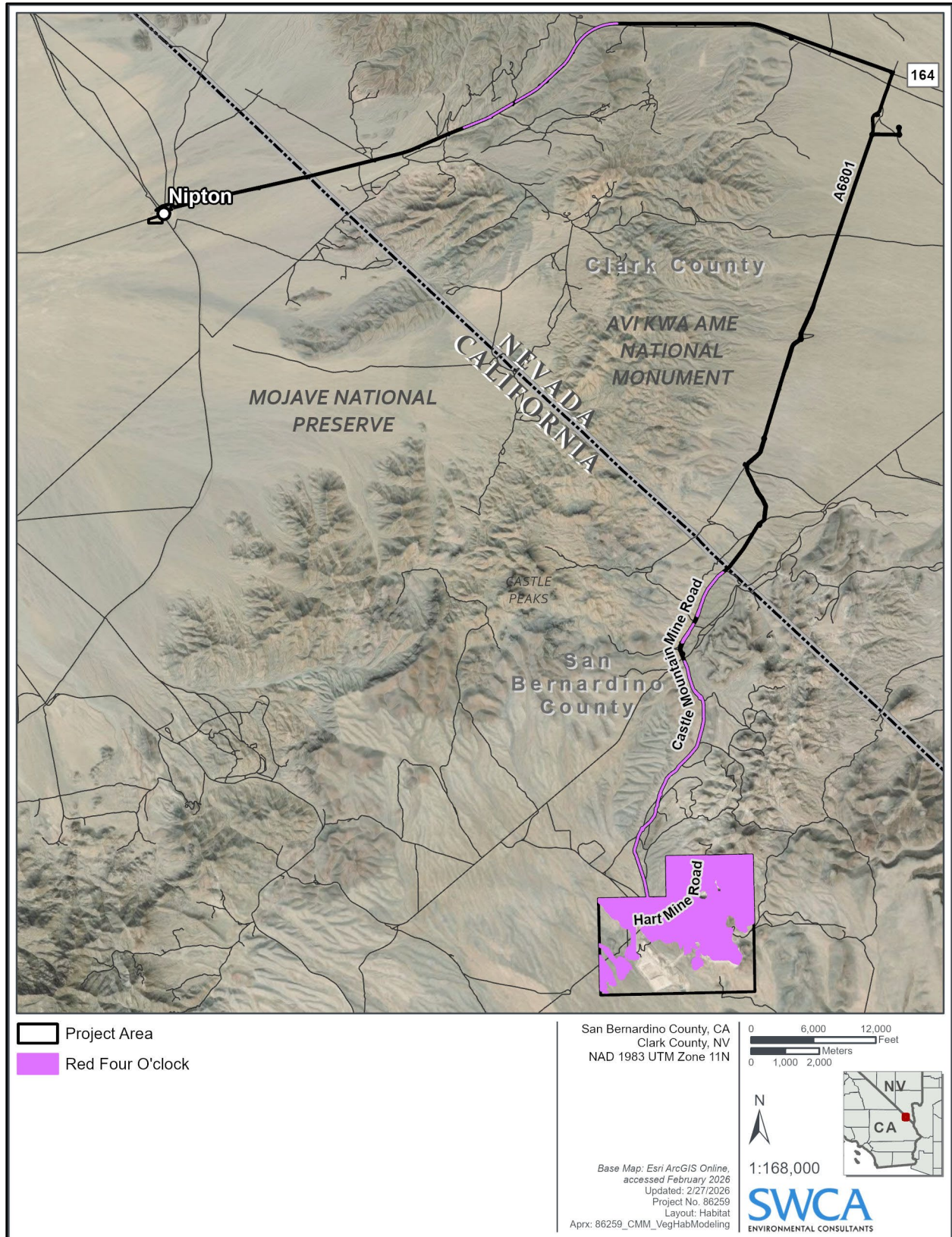


Figure C.3.6-16. Potential Red Four O'clock Habitat within the Analysis Area

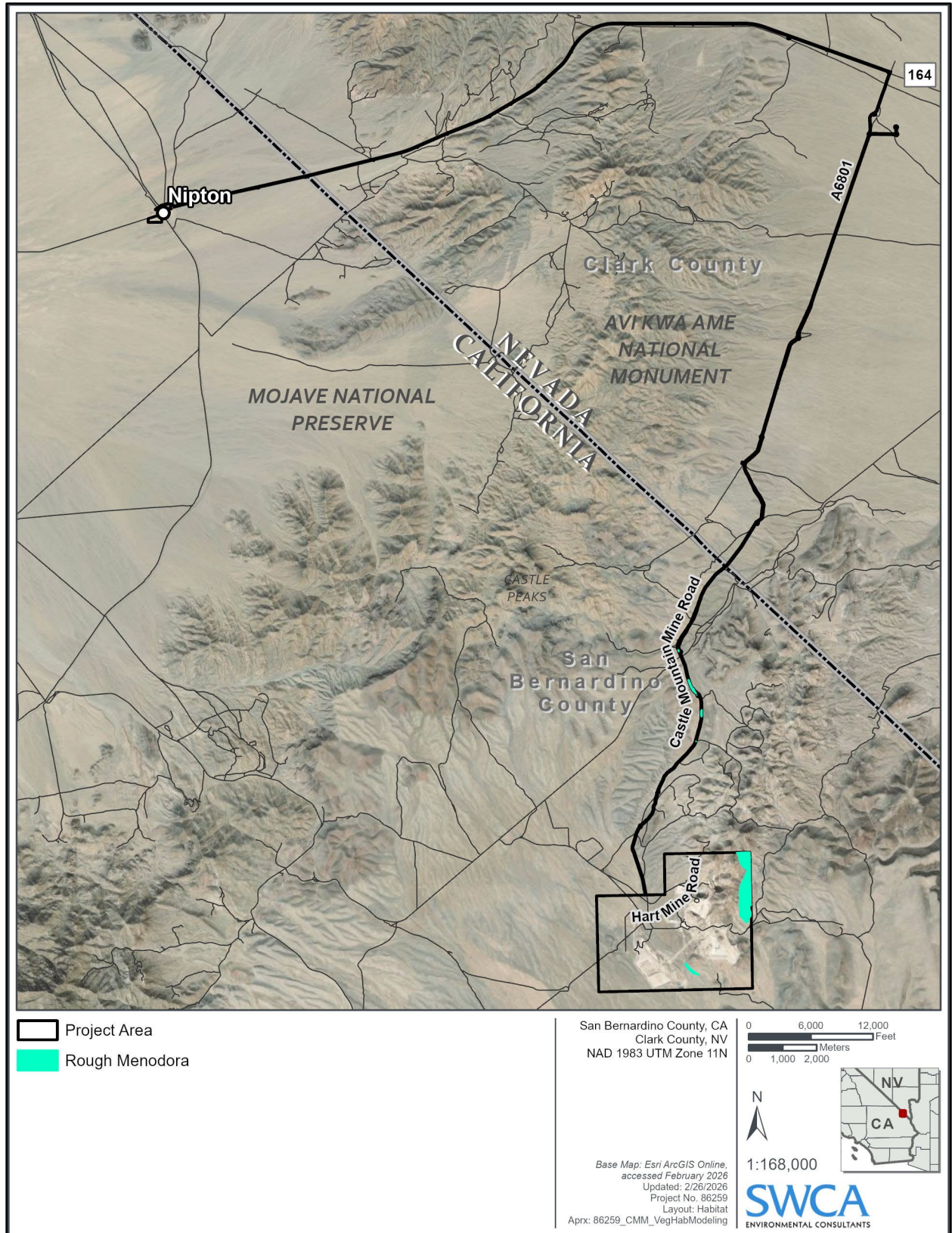


Figure C.3.6-17. Potential Rough Menodora Habitat within the Analysis Area

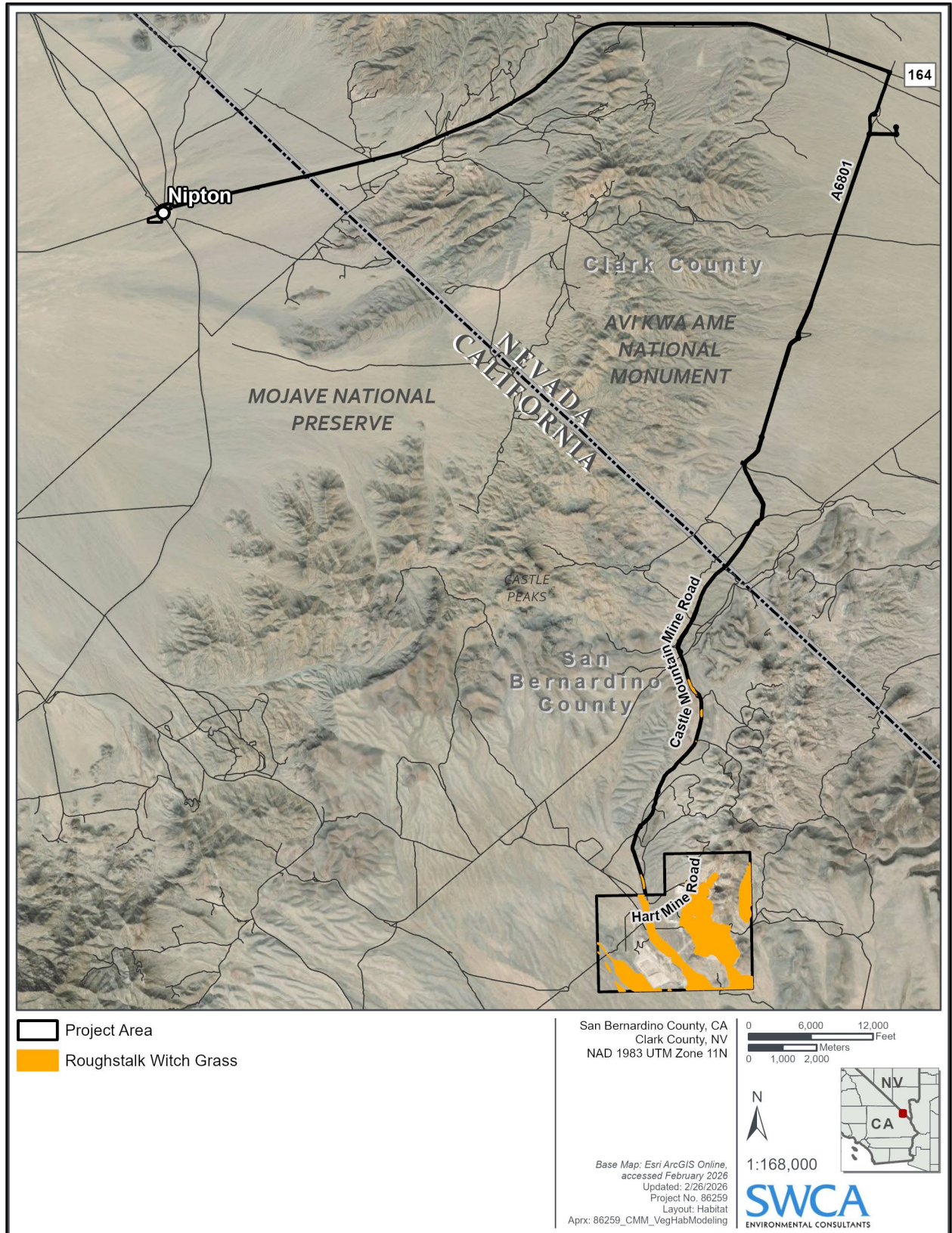


Figure C.3.6-18. Potential Roughstalk Witch Grass Habitat within the Analysis Area

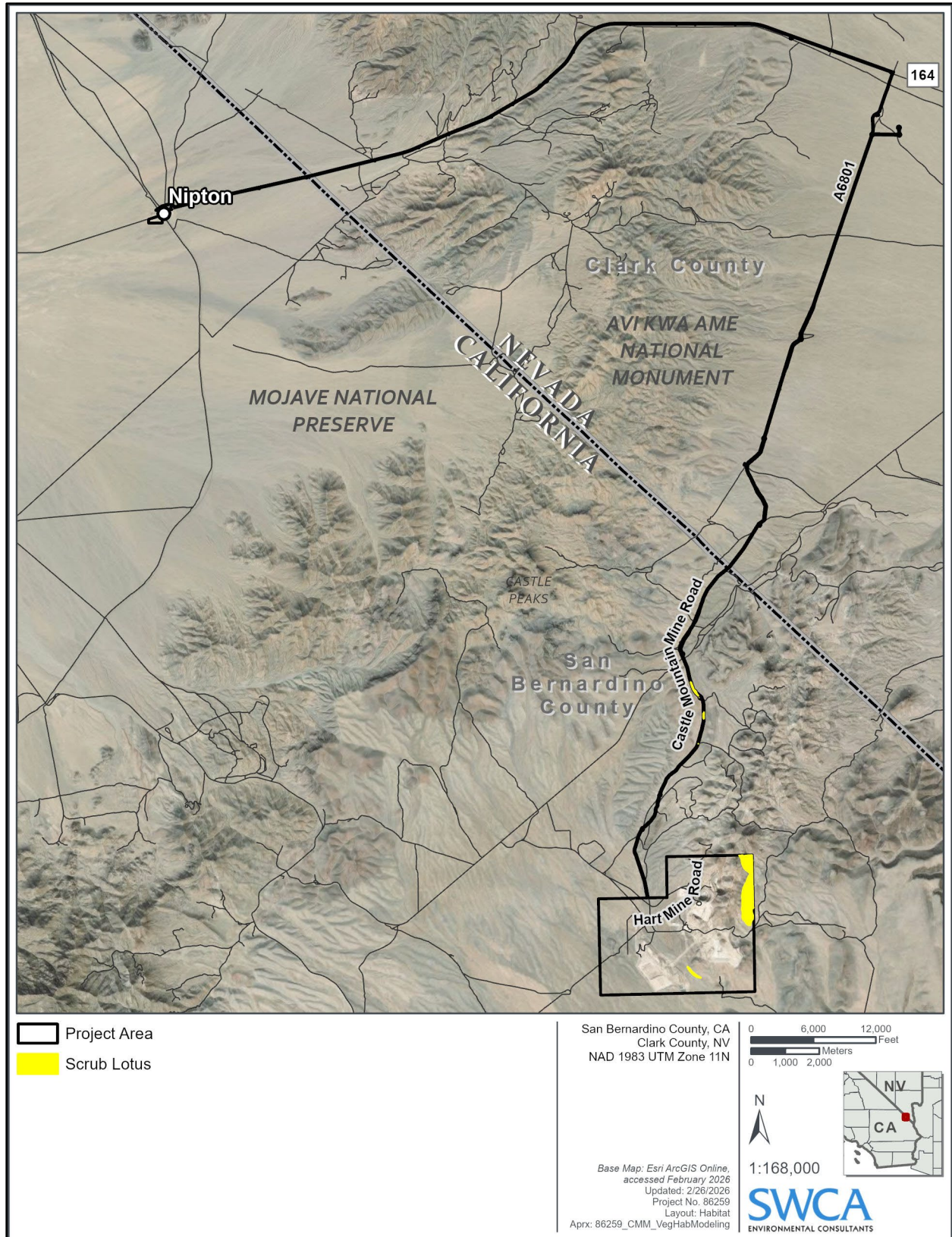


Figure C.3.6-19. Potential Scrub Lotus Habitat within the Analysis Area

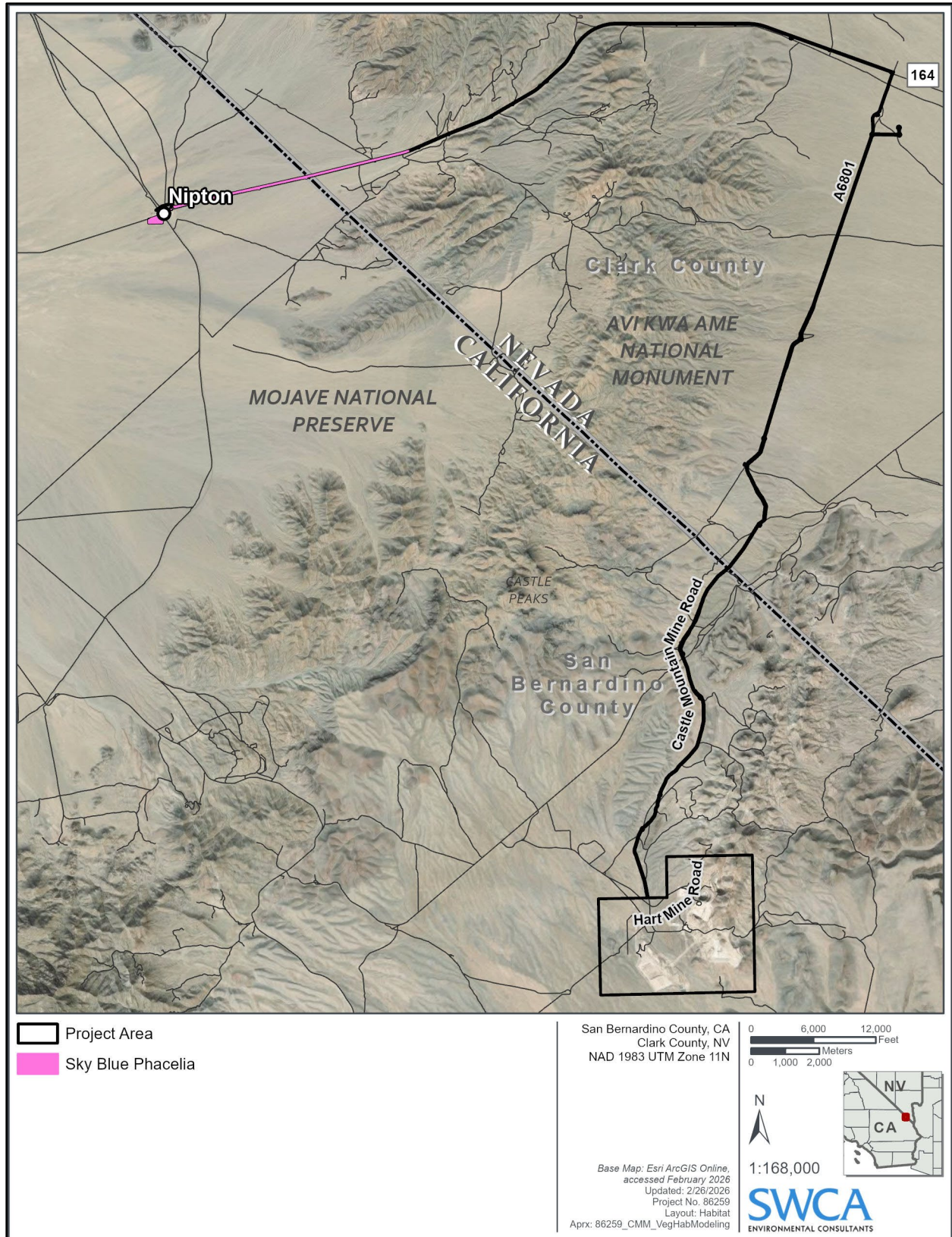


Figure C.3.6-20. Potential Sky Blue Phacelia Habitat within the Analysis Area

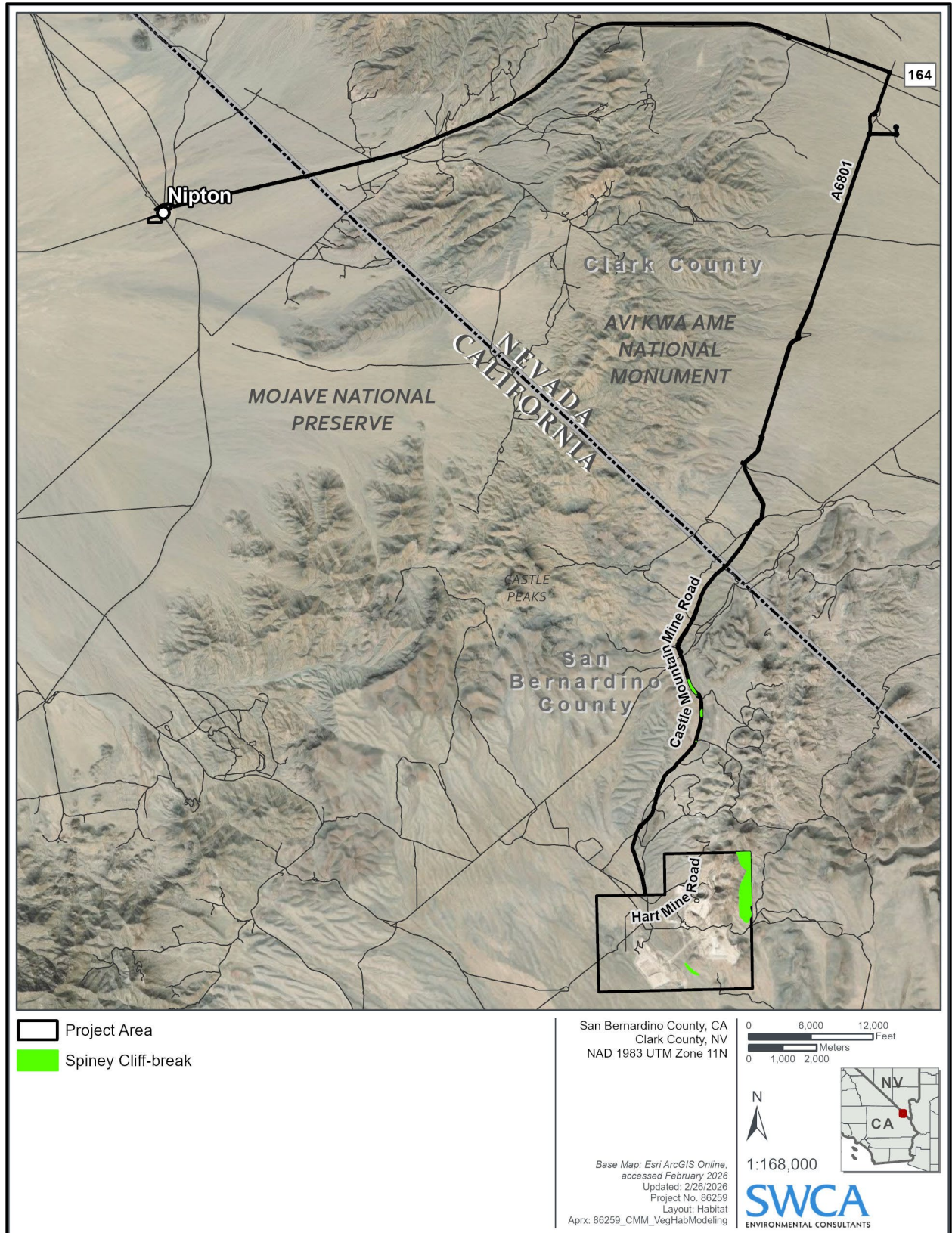


Figure C.3.6-21. Potential Spiney Cliff-break Habitat within the Analysis Area

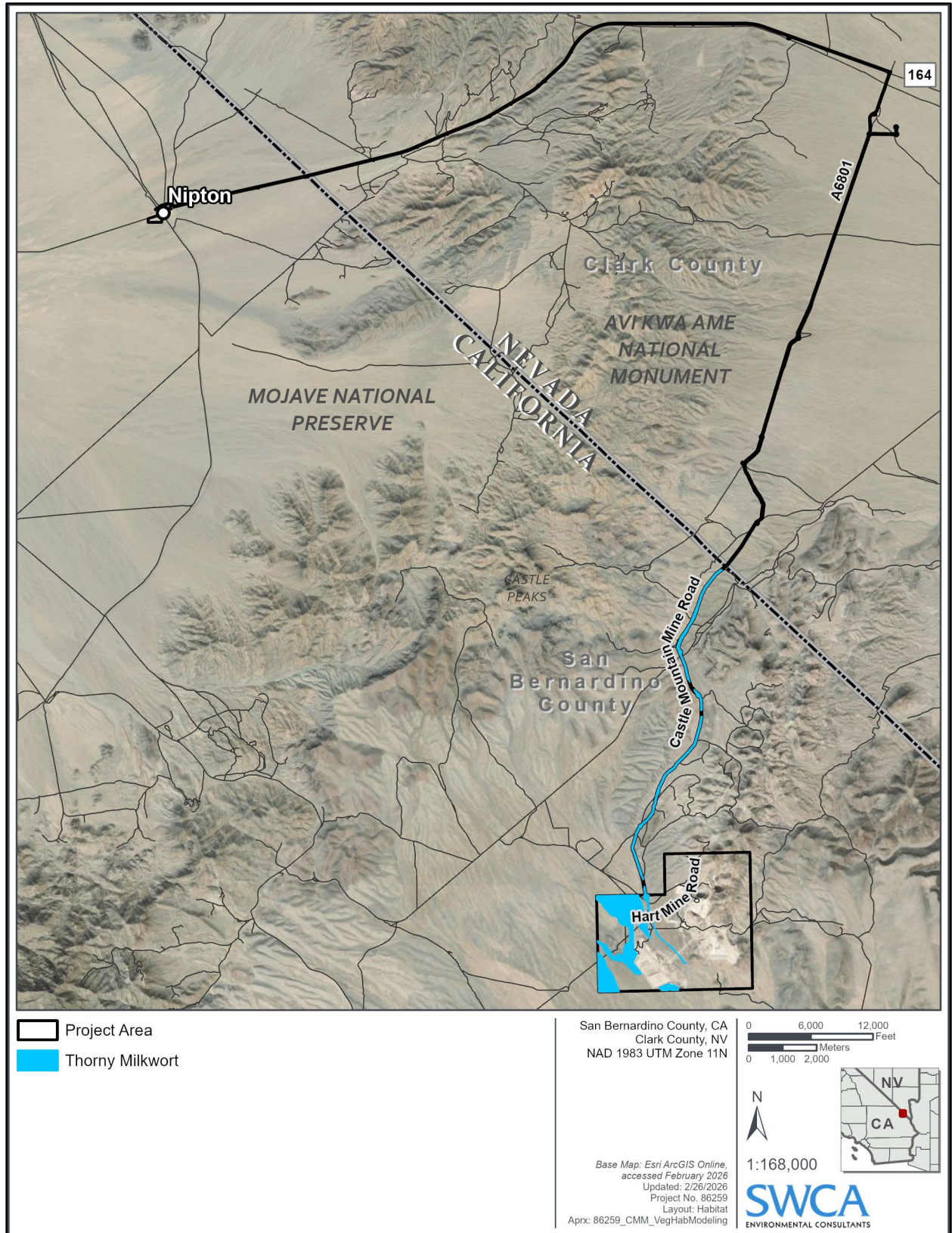


Figure C.3.6-22. Potential Thorny Milkwort Habitat within the Analysis Area

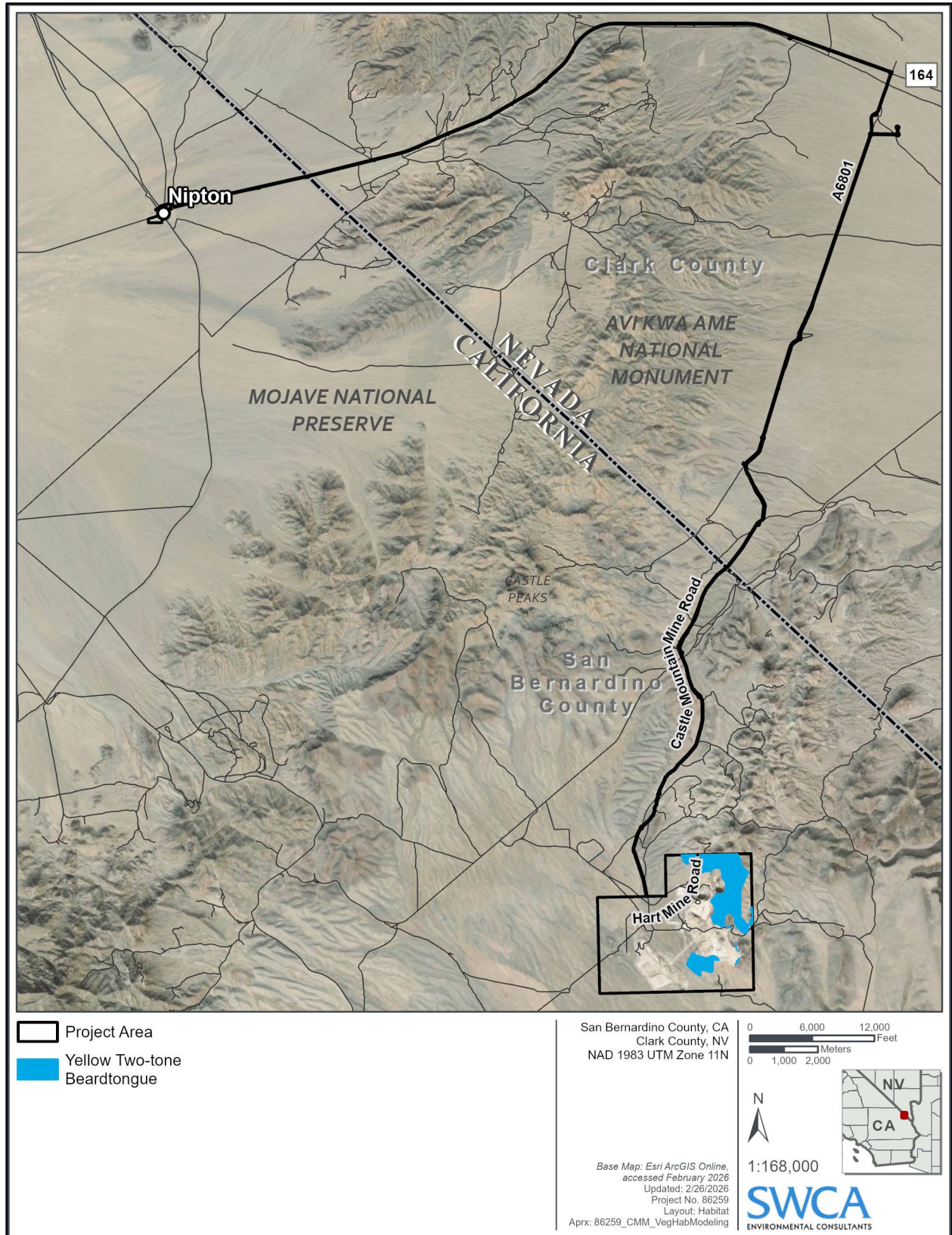


Figure C.3.6-23. Potential Yellow Two-tone Beardtongue Habitat within the Analysis Area

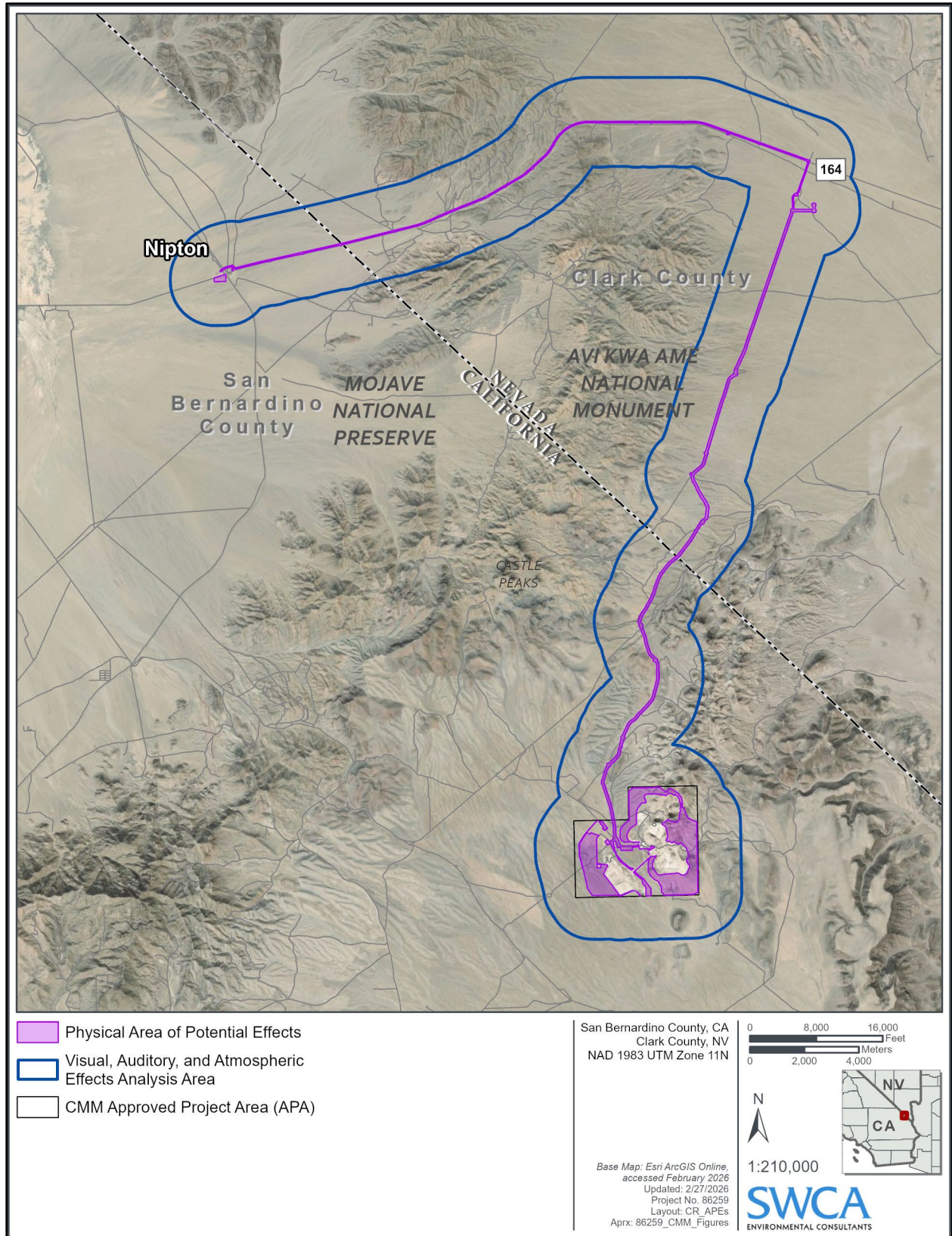


Figure C.3.7-1. Section 106 Undertaking APE and Cumulative Effects Area

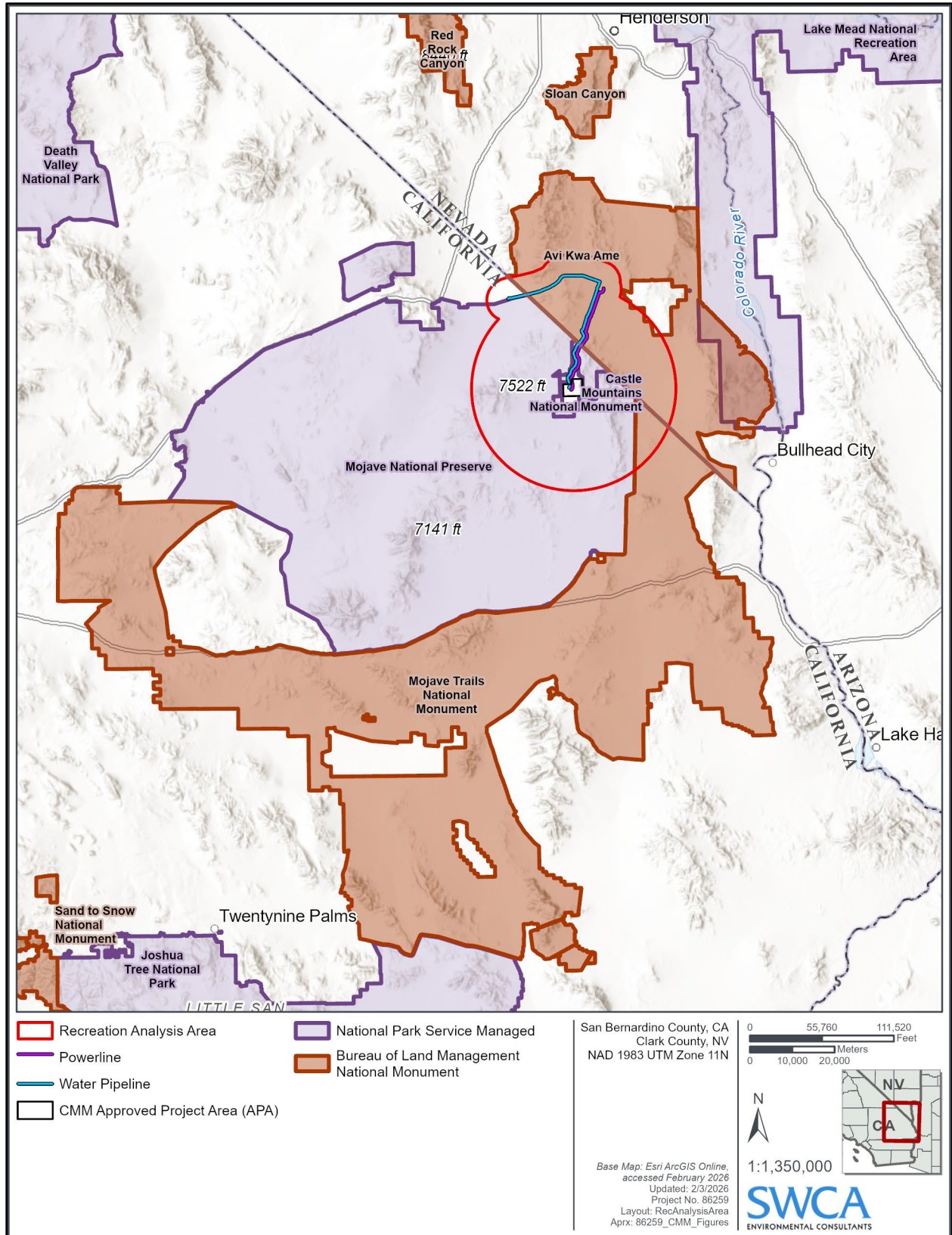
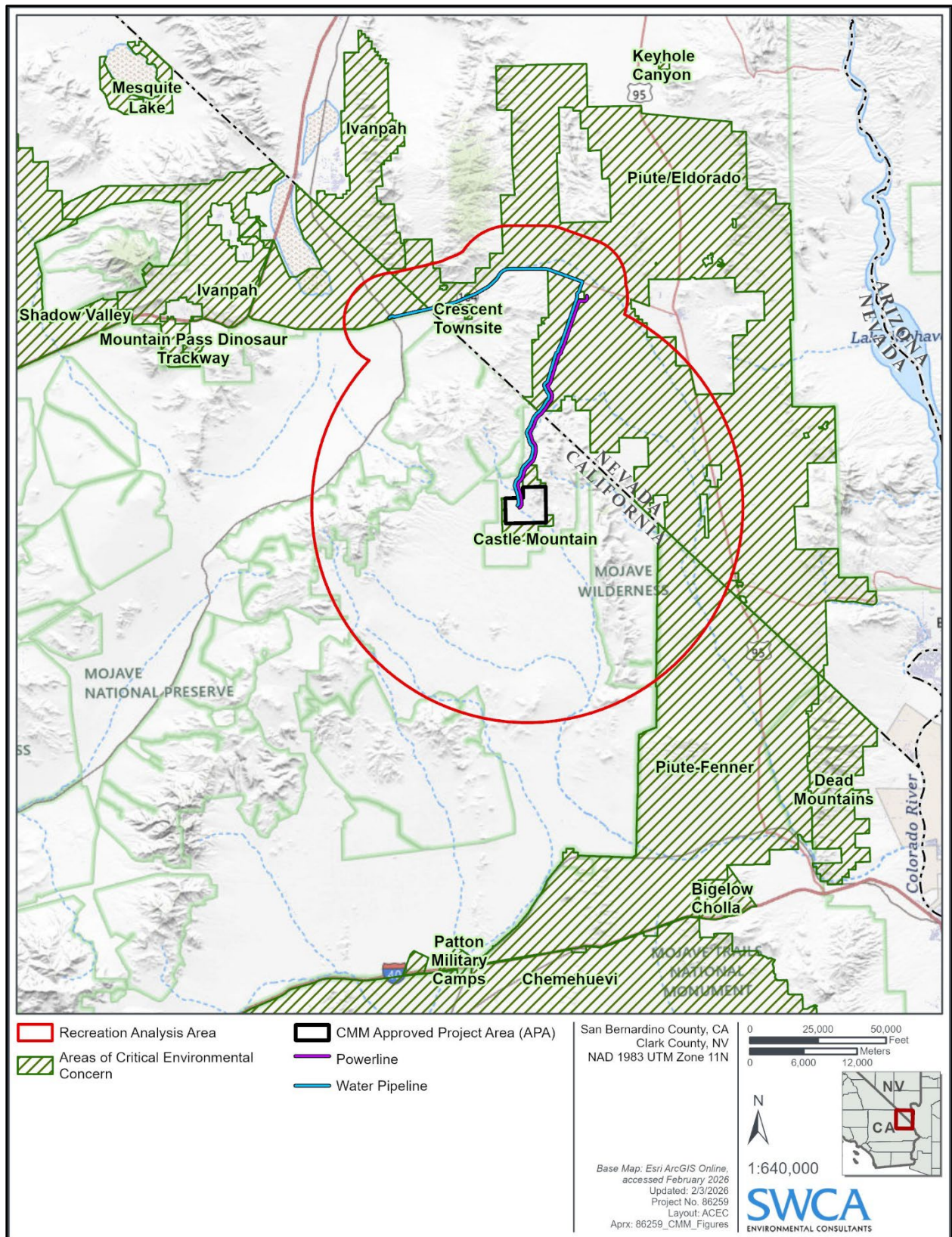


Figure C.3.11-1. Recreation and Special Designations Analysis Area Map



**Figure C.3.11-2. Areas of Critical Environmental Concern in the Recreation and Special Designations Analysis Area**

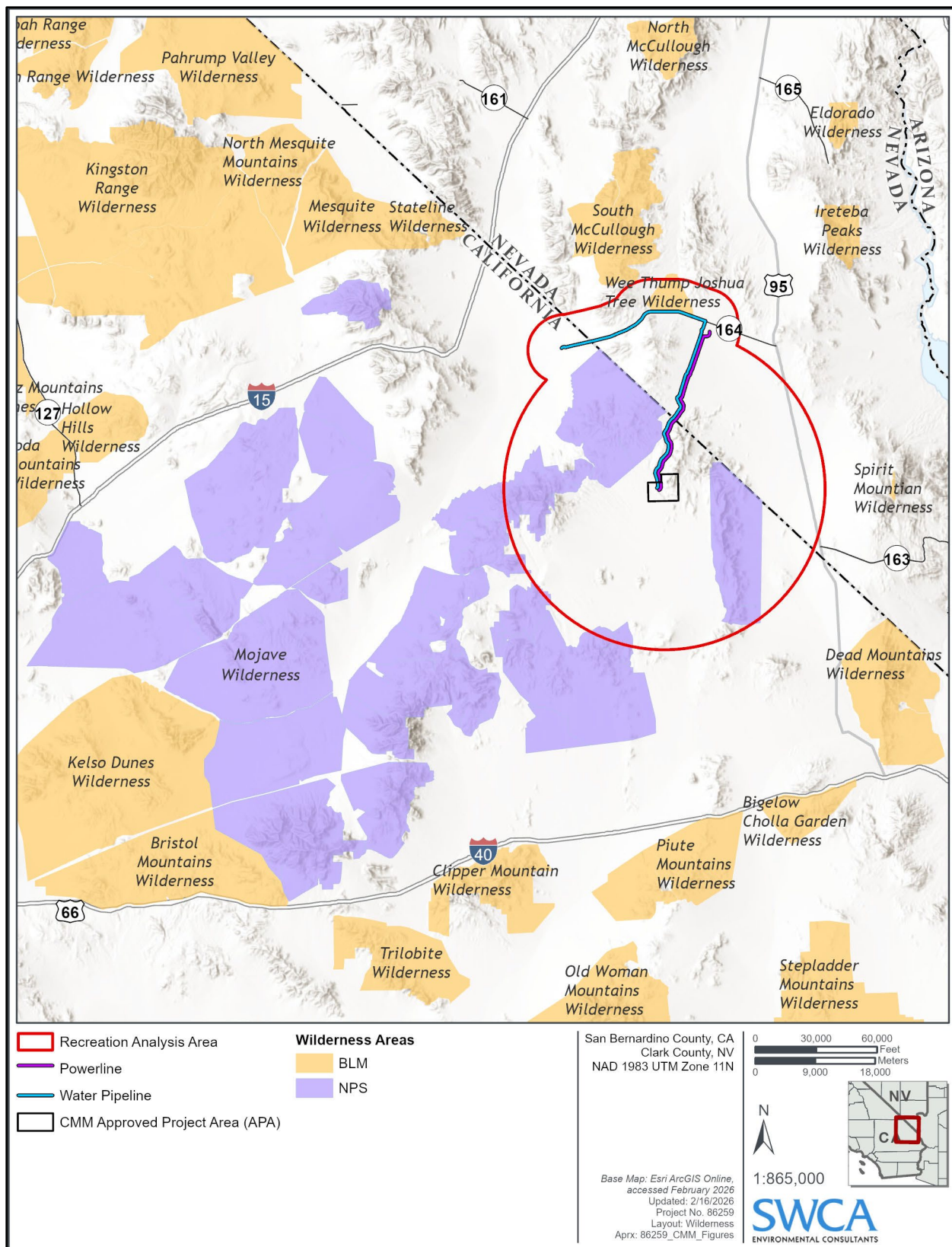
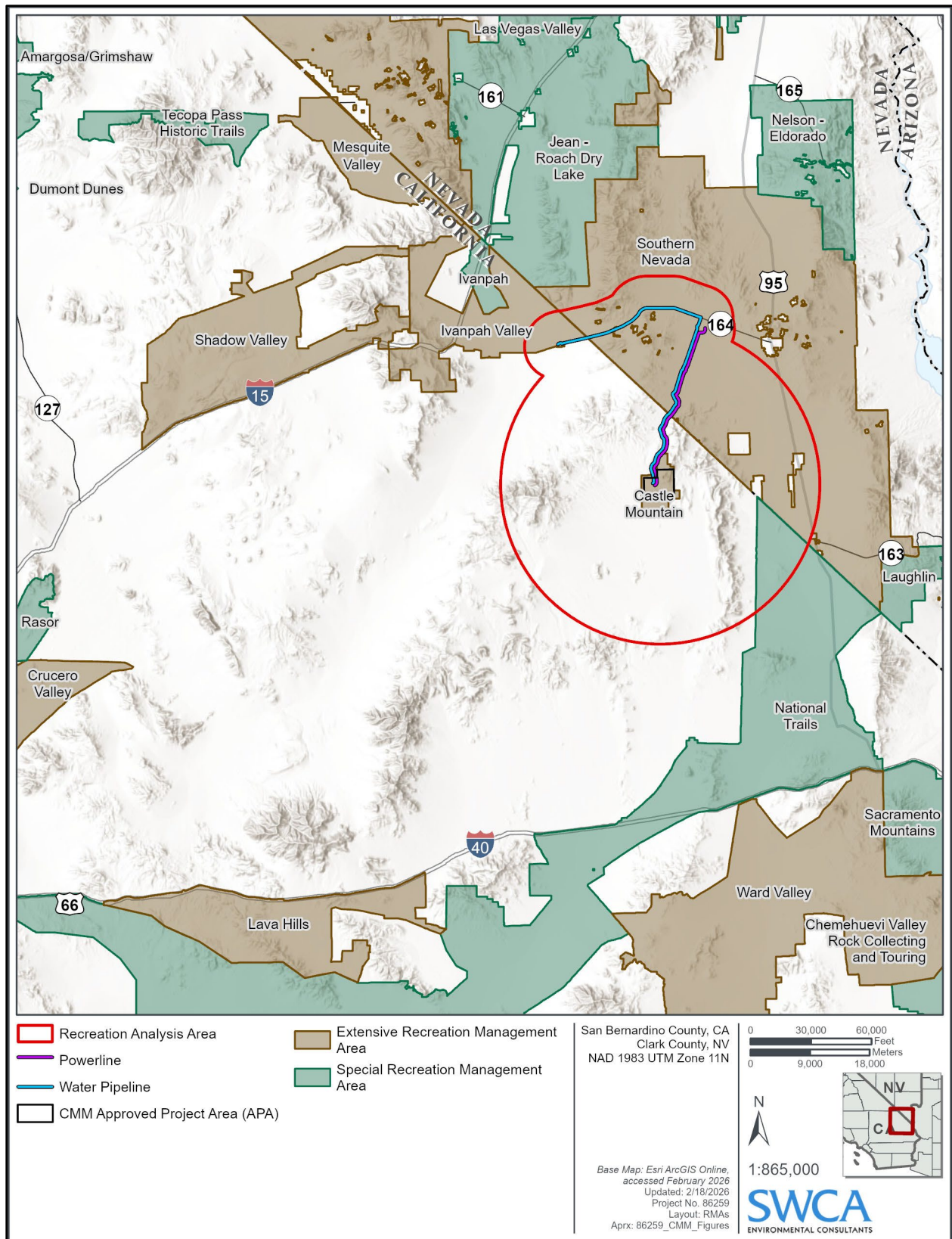


Figure C.3.11-3. Wilderness Areas in the Recreation and Special Designations Analysis Area



**Figure C.3.11-4. Recreation Management Areas in the Recreation and Special Designations Analysis Area**

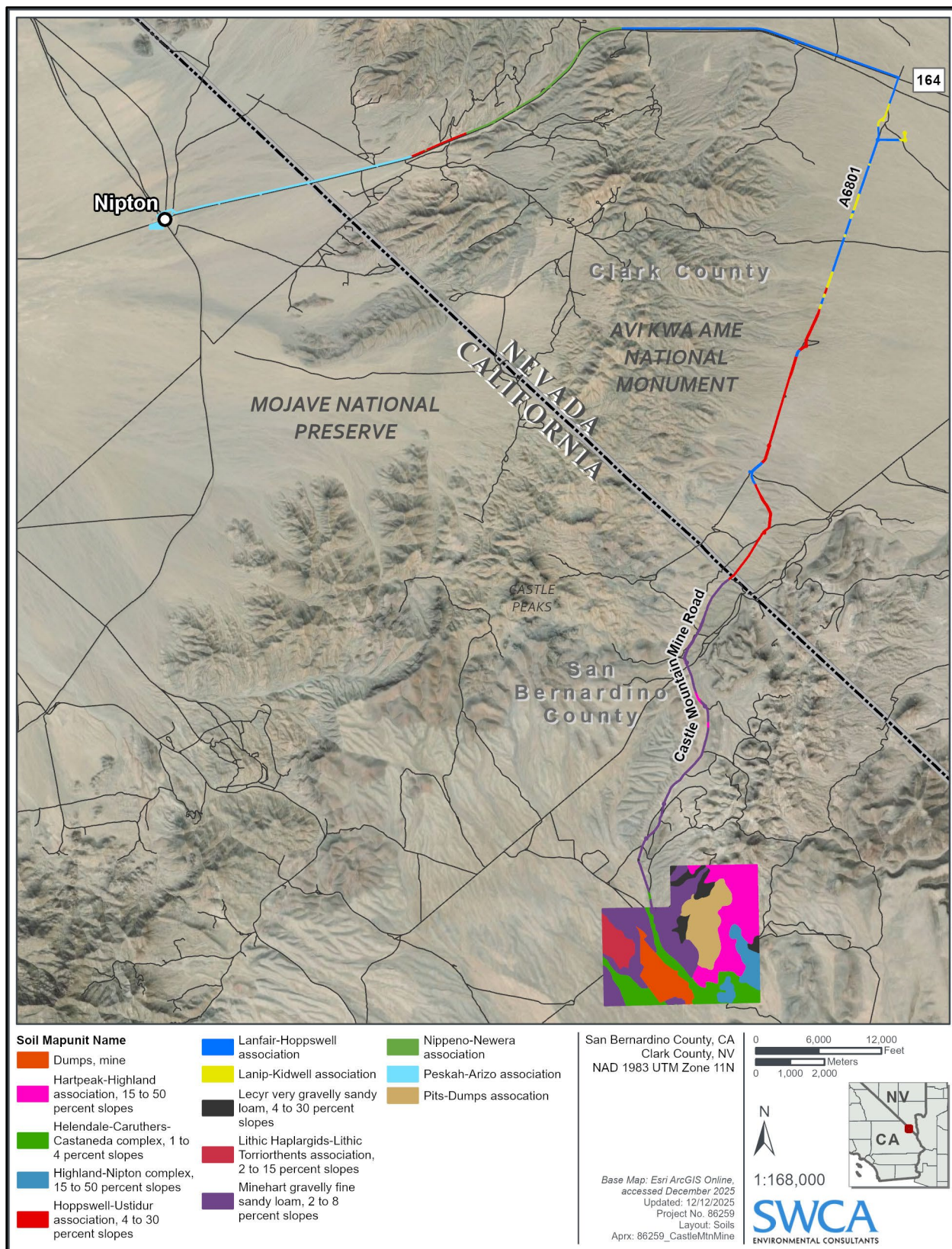


Figure C.3.13-1. Soil Map Units in the Soils Analysis Area

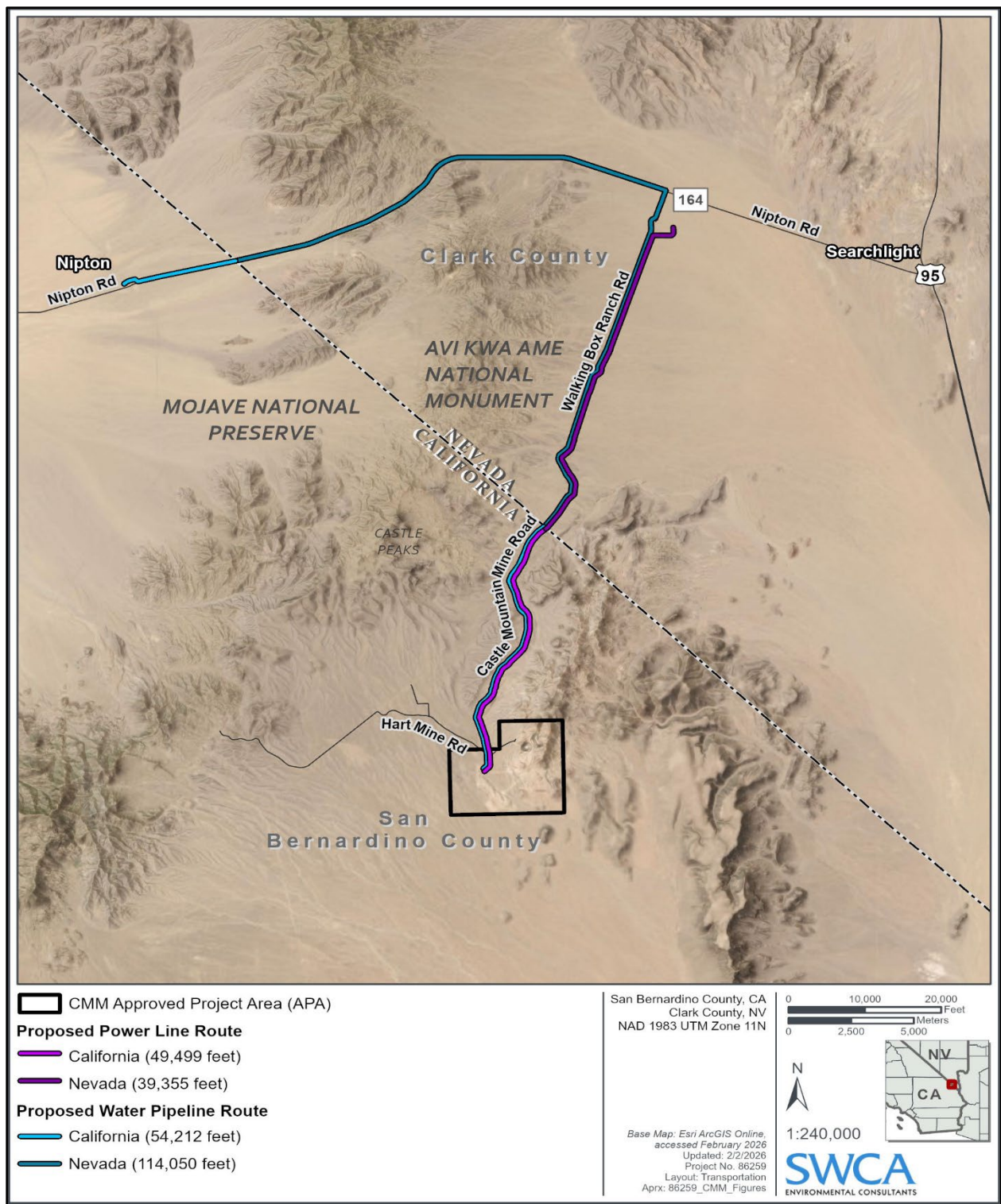


Figure C.3.14-1 Transportation Routes in the Transportation Analysis Area

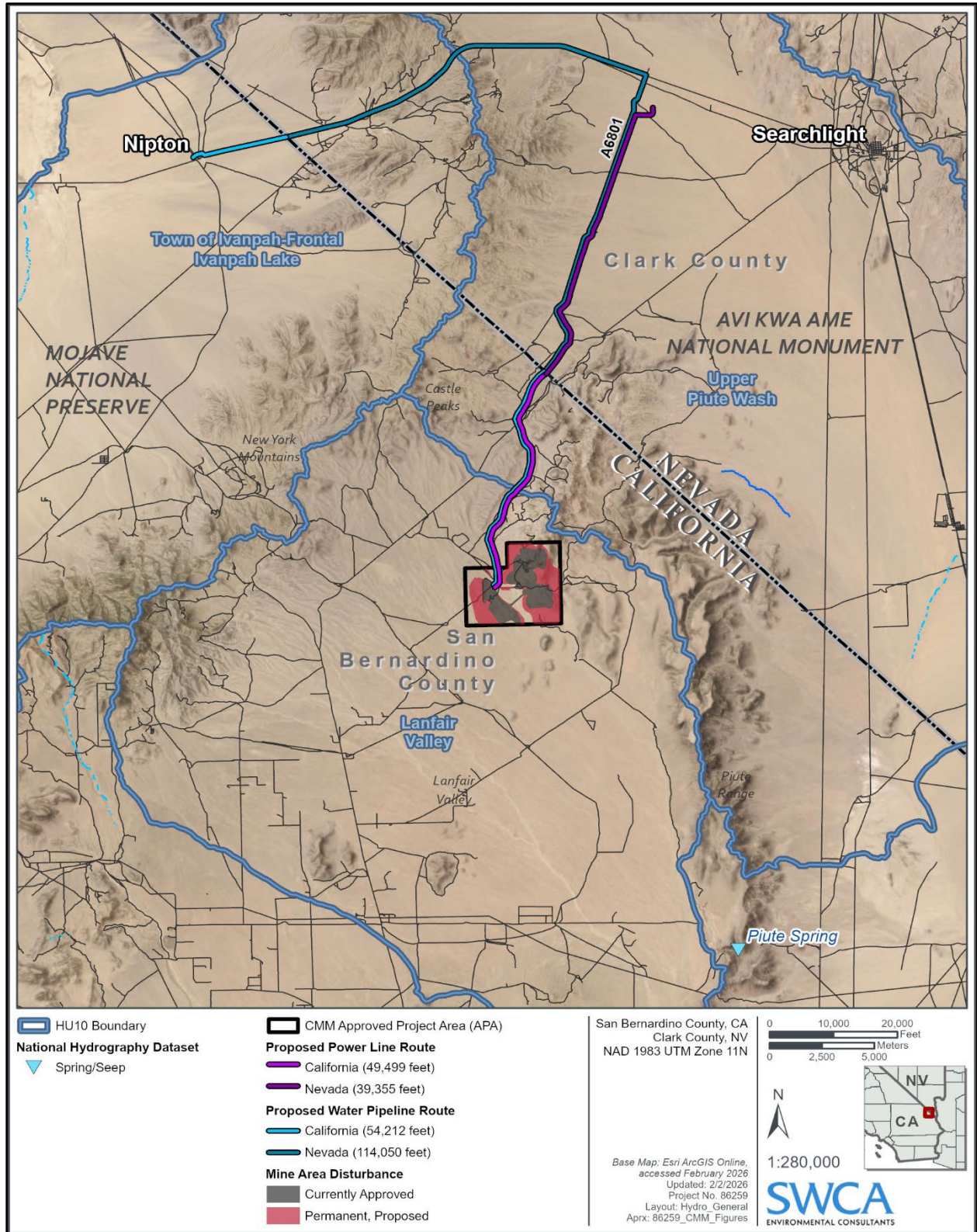


Figure C.3.17-1. General Water Resources in the Water Resources Analysis Area

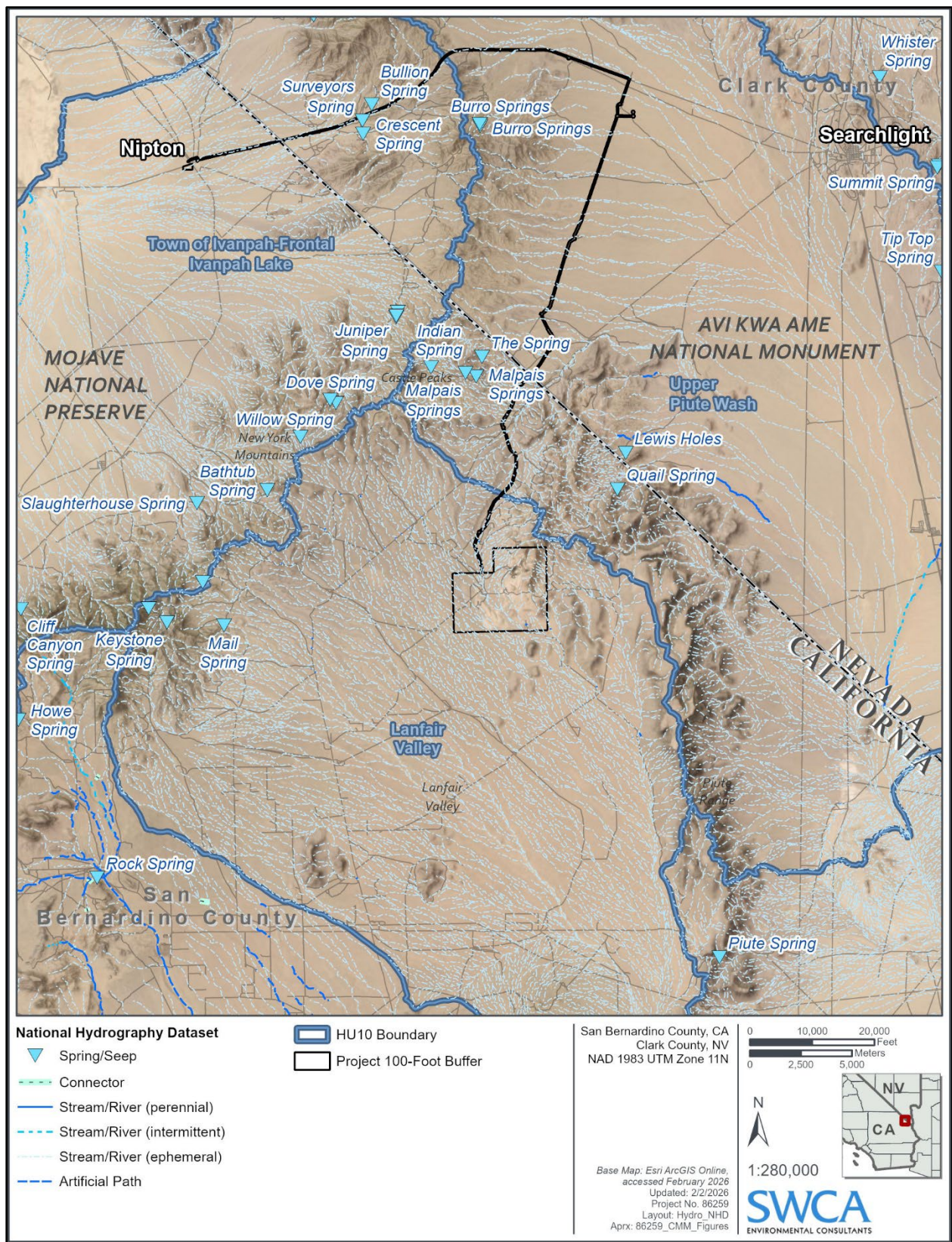


Figure C.3.17-2. Surface Water Features in the Water Resources Analysis Area

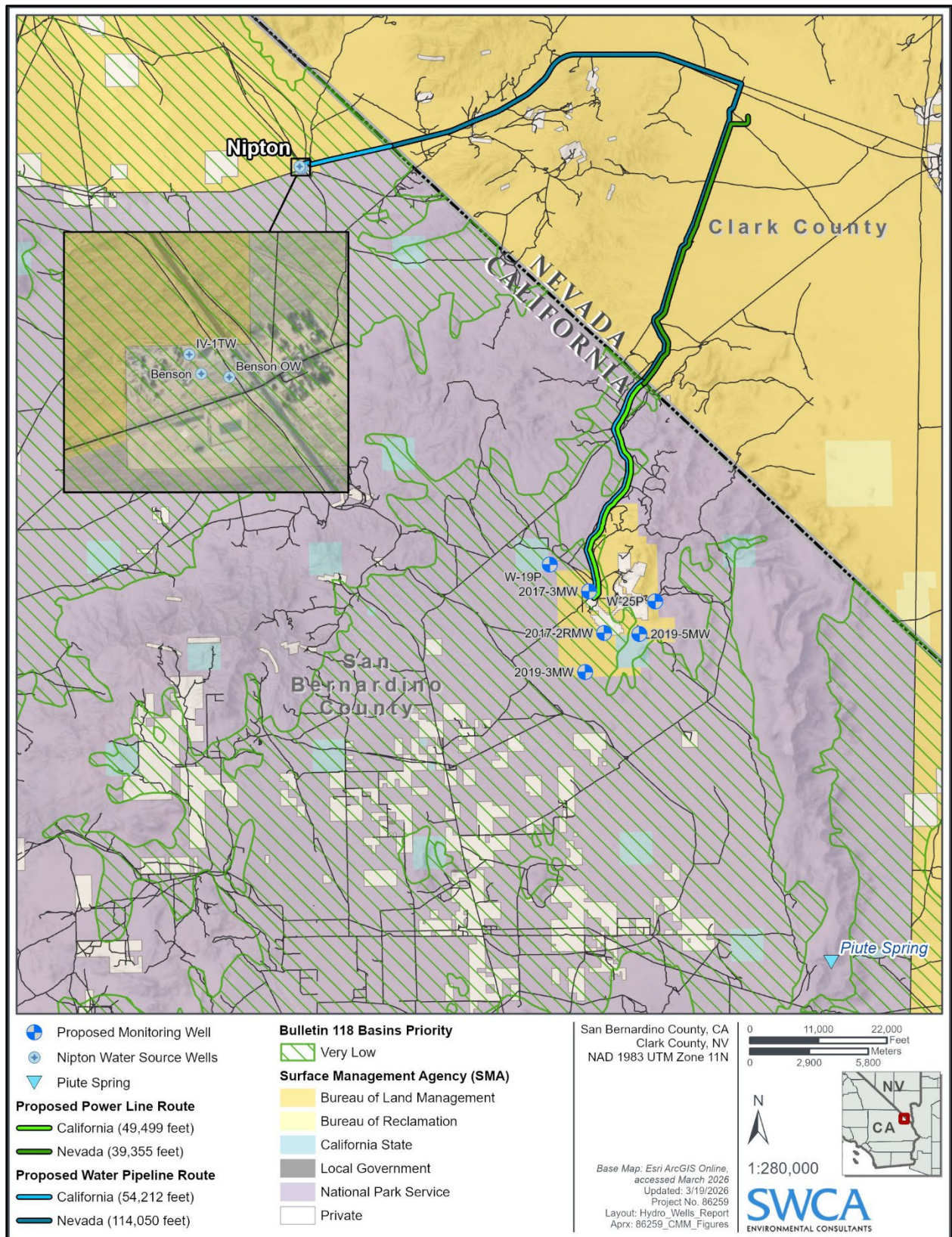


Figure C.3.17-3. Monitoring Wells and Proposed Dewatering Wells in the Water Resources Analysis Area

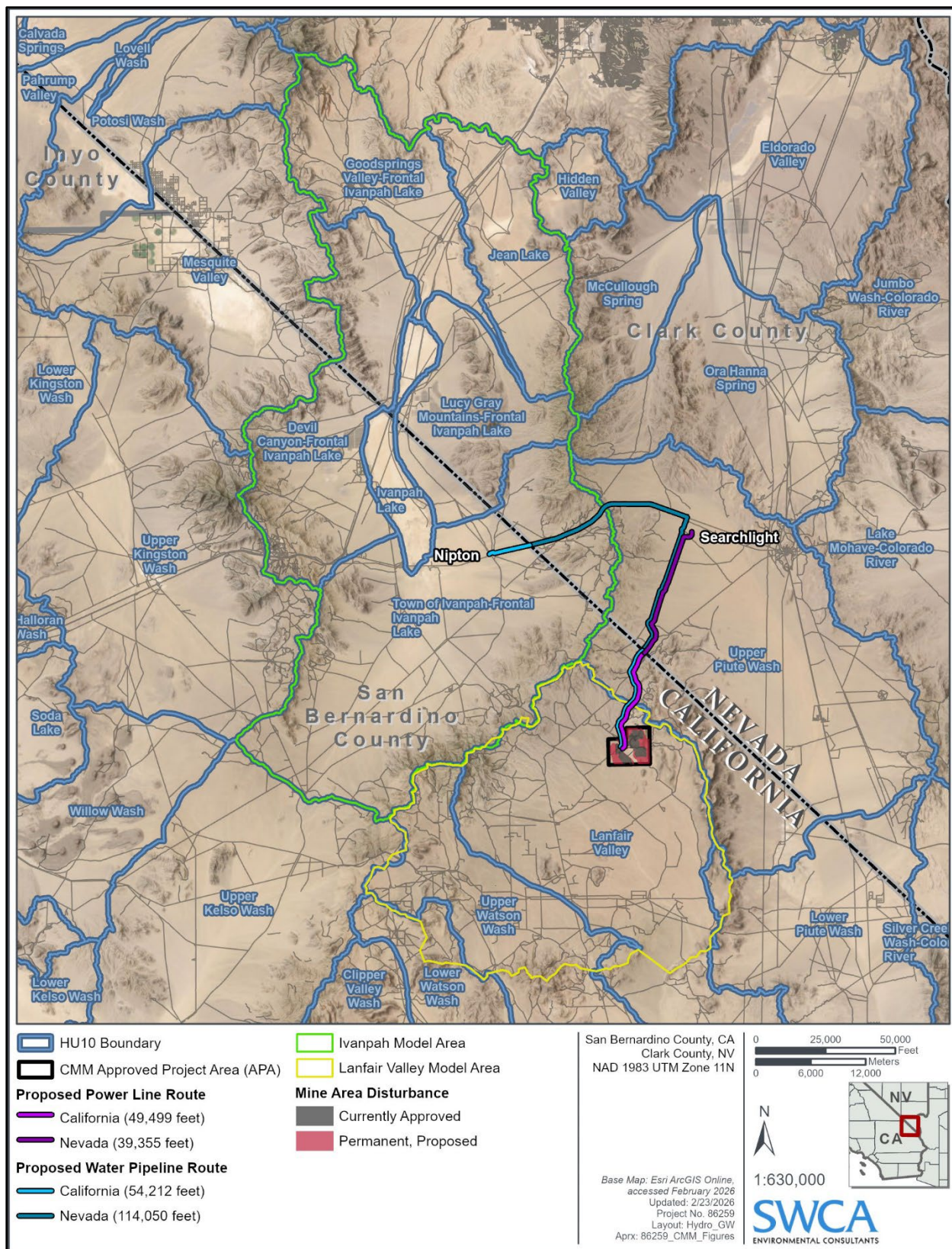


Figure C.3.17-4. Groundwater Modeling Areas in the Water Resources Analysis Area