



Land Use Services Department

AB 98: Updating Truck Routes in Bloomington

Lauren Miracle, Planner
Land Use Services Department
October 1, 2025

Colin Drukker, Principal
PlaceWorks



State law (Assembly Bill 98)

- Passed in late 2024

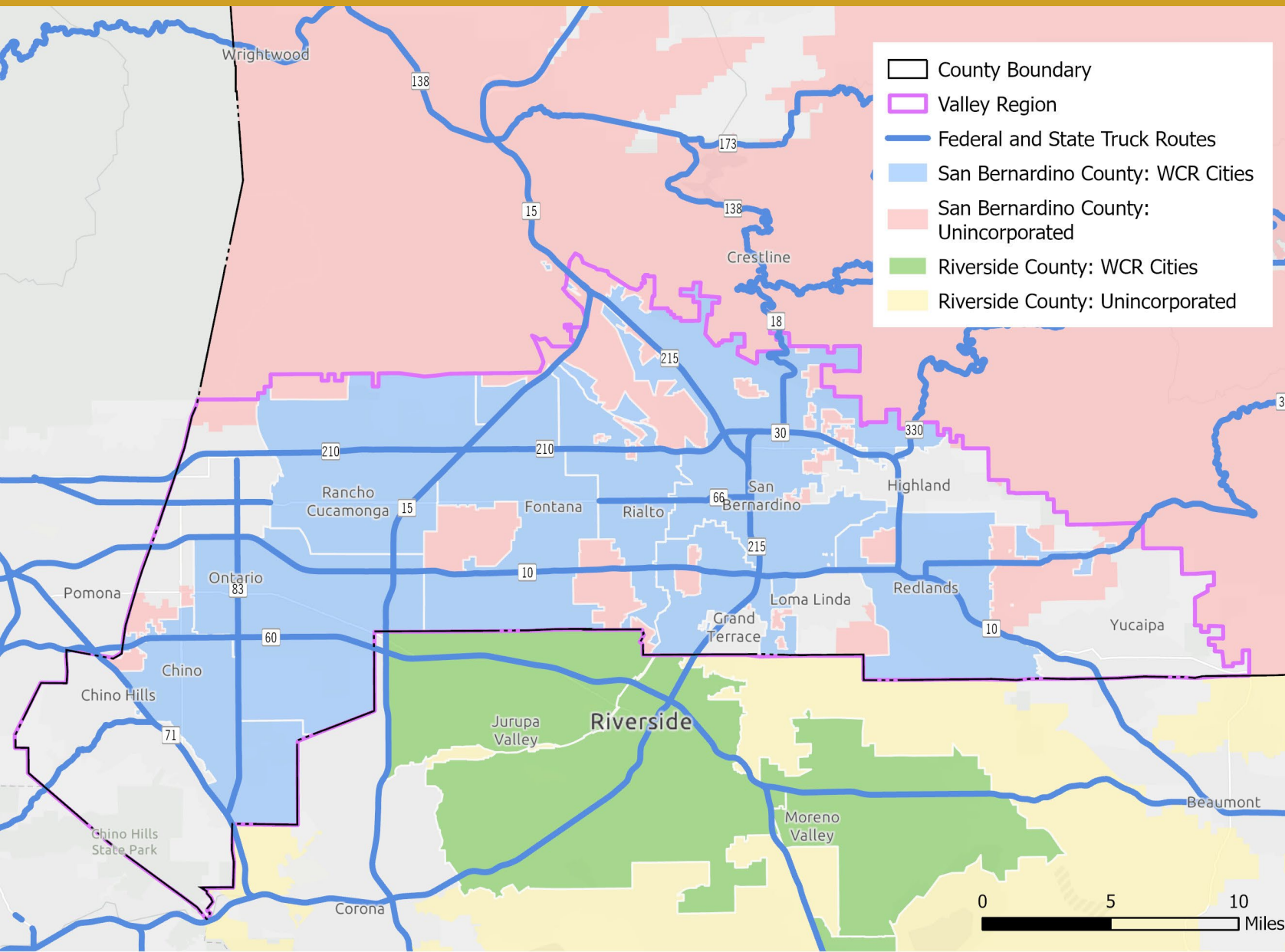
Legislative objectives

- Complete truck route system including local roads across all California jurisdictions
- Minimize the impact of heavy vehicles on sensitive receptors
- Maintain safe and efficient movement of goods
- Assist in enforcing approved truck routes

Sensitive receptors

- Uses that include residences, schools, daycare facilities, parks, playgrounds, nursing homes, and hospitals

Warehouse Concentration Region (WCR)



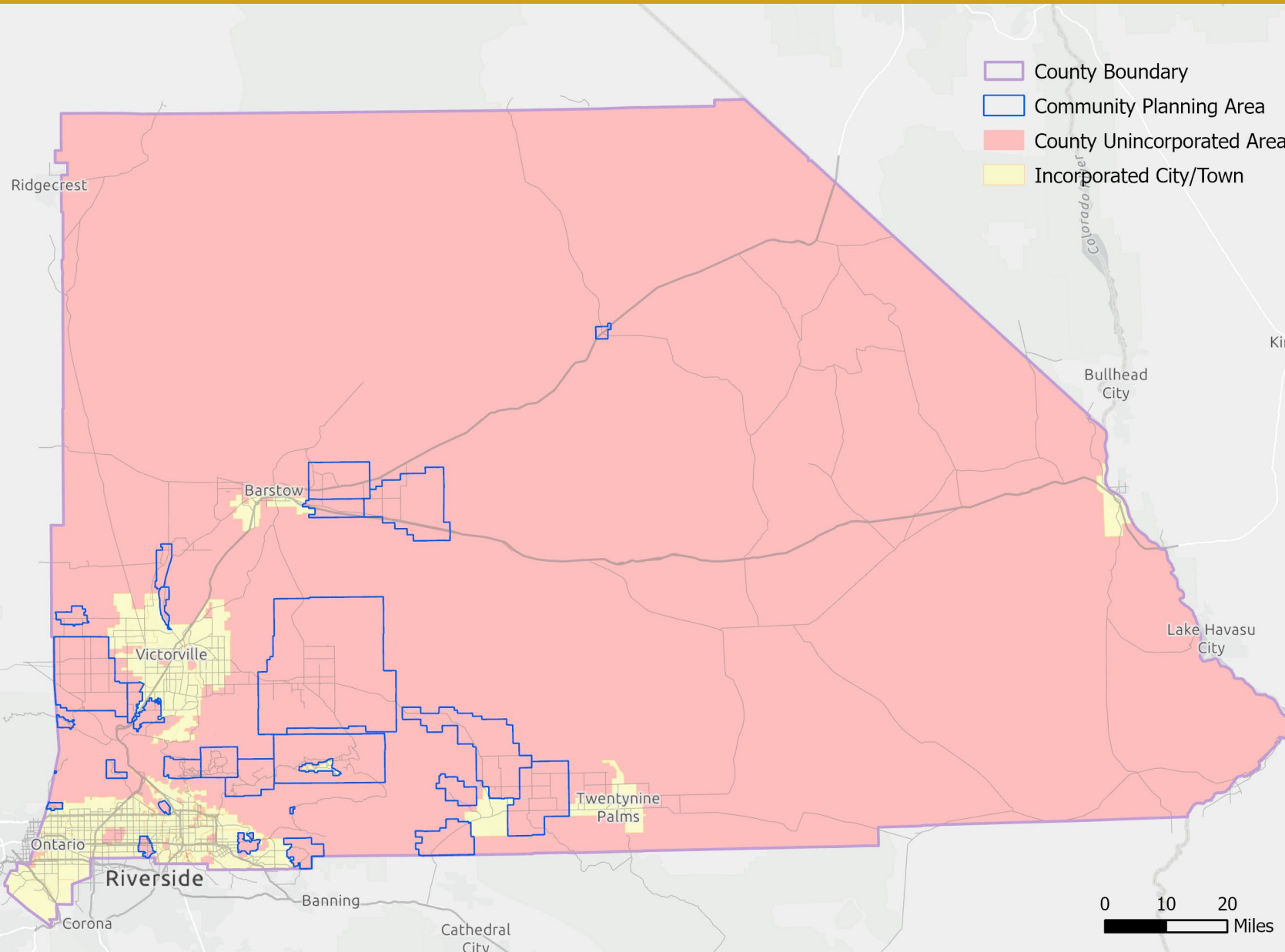
Deadline for compliance

State law lists the jurisdictions shown in color on this map as the WCR.

They must update their truck routes by January 1, 2026.

(all other jurisdictions have until at least 2028)

County Responsibility: Unincorporated Areas



The County is responsible for evaluating truck routes within the **unincorporated** portion of its jurisdiction.



Policy TM-5.5 Countywide truck routes

We support SBCTA's establishment of regional truck routes that efficiently distribute regional truck traffic while minimizing impacts on residents. We support funding through the RTP to build adequate truck route infrastructure.

Policy TM-5.6 Unincorporated truck routes

We establish local truck routes in unincorporated areas to efficiently funnel truck traffic to freeways while minimizing impacts on residents. We establish routes where trucks are prohibited in unincorporated environmental justice focus areas and to avoid overlaps or conflicts with safe routes to schools.

Policy HZ-2.4 Truck routes for hazardous materials

We designate truck routes for the transportation of hazardous materials through unincorporated areas and prohibit routes that pass through residential neighborhoods to the maximum extent feasible.

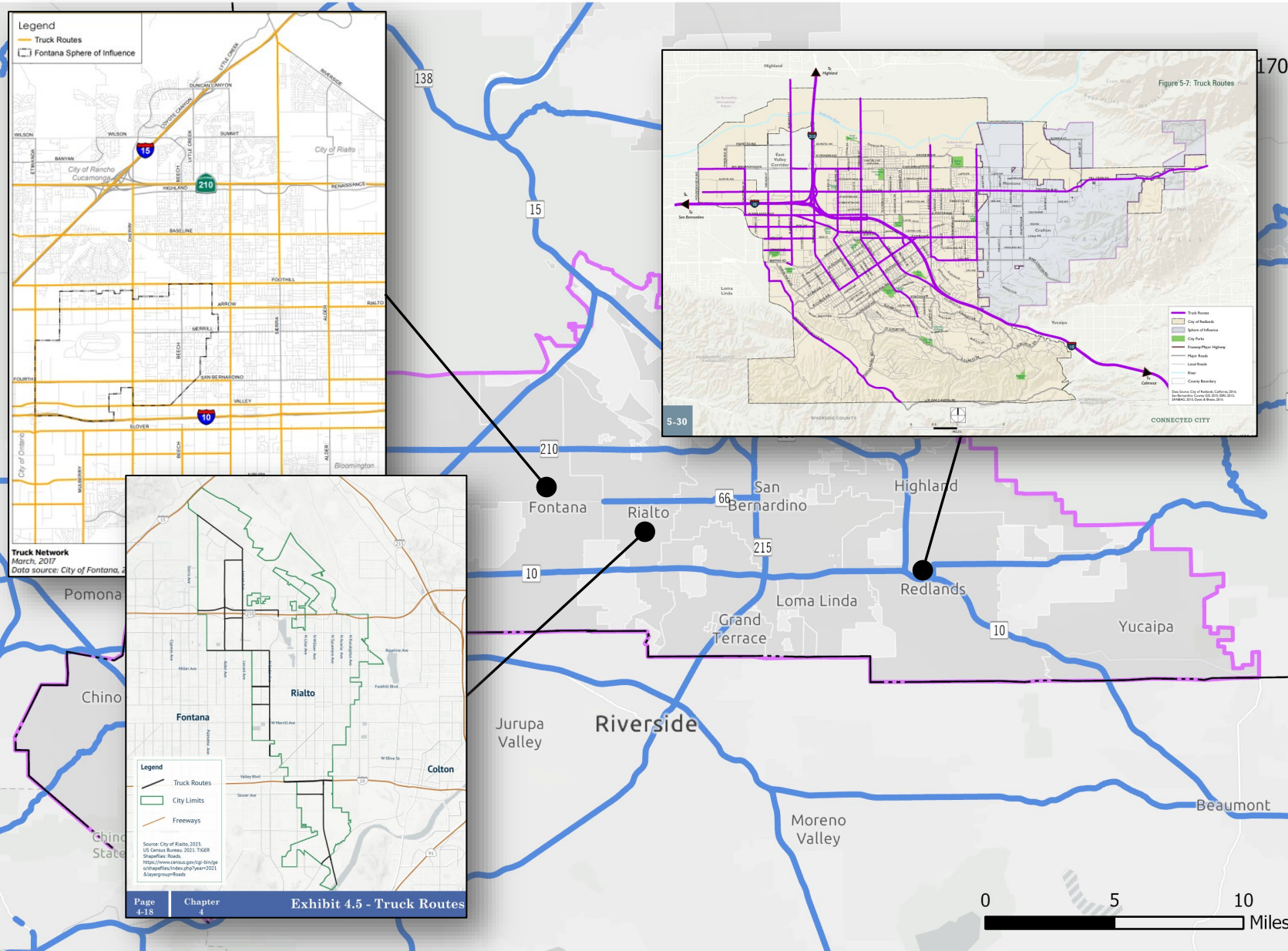


Current Truck Routes in the Policy Plan



Map TM-5 Goods Movement displays the network of truck routes that travel across San Bernardino County and adjacent jurisdictions.

Truck Routes in the Valley Region



Many local jurisdictions designate local roads as truck routes.

Examples:

Fontana, Rialto, and Redlands
General Plans

By January 1, 2026

- Identify updates to County truck routes in unincorporated areas
- Conduct public engagement
- Publish truck routes and initiate signage efforts

2026

- Continue coordination with jurisdictions and evaluate need for further updates
- Update strategies and approaches for truck route enforcement

Ongoing (as appropriate)

- Coordinate with all jurisdictions based upon potential changes to truck routes

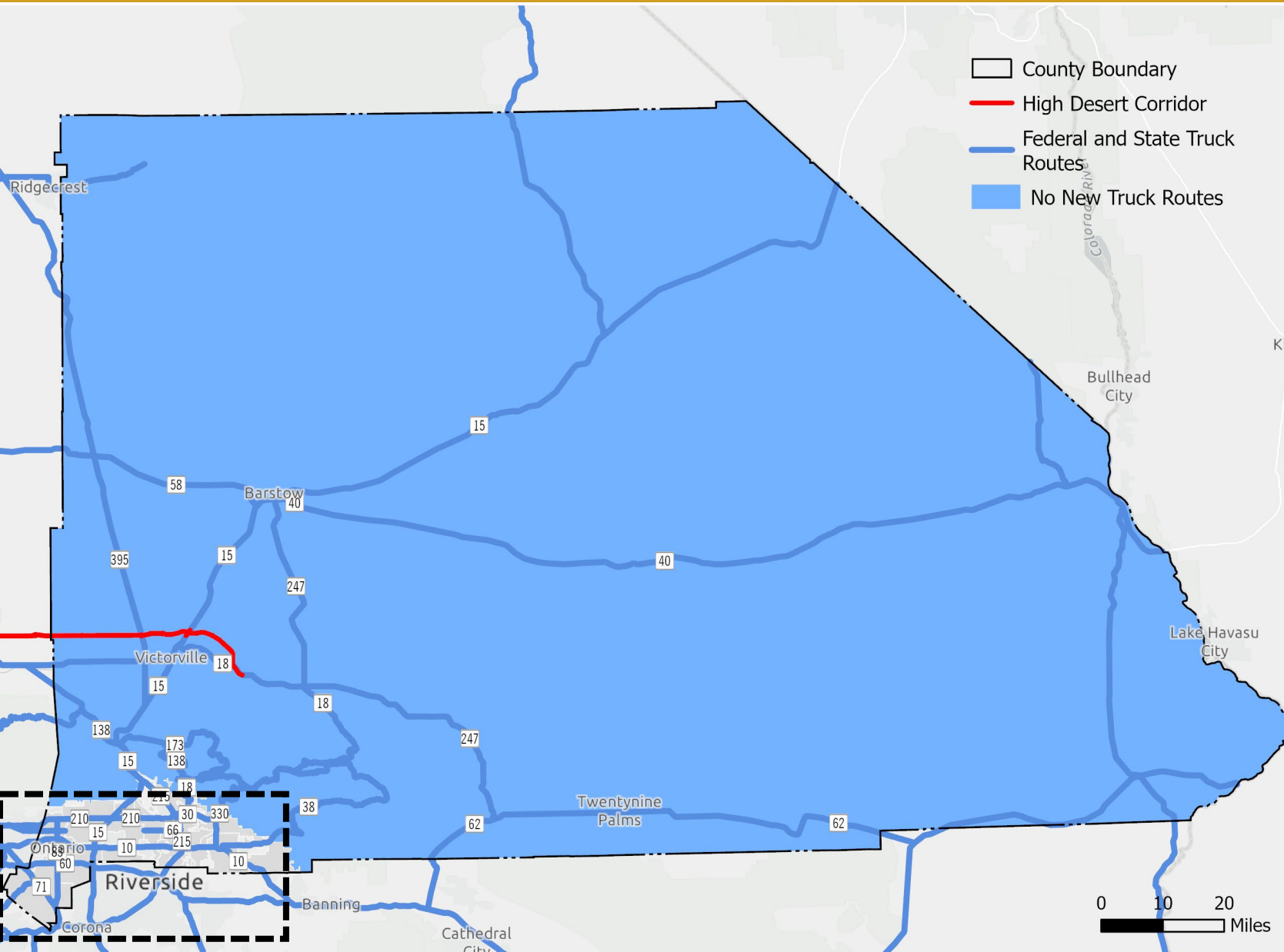
As required by State law (*GOV CODE 65302.02*)

- Ensure efficient and safe routes for goods movement
- Maximize the use of freeways, highways, and major roadways (arterials/collectors)
- Local roads acceptable when properties fronting roadway are at least 50% commercial or industrial
- Minimize exposure of sensitive receptors to truck routes
- Engage the community to obtain input

Federal law (*23 CFR 658.19(a)*)

- Regardless of State or County truck route designations, federal law allows heavy duty trucks to travel along local roads when necessary to serve businesses and obtain food/rest/repairs by the safest and most practical route

Outside of the Valley Region

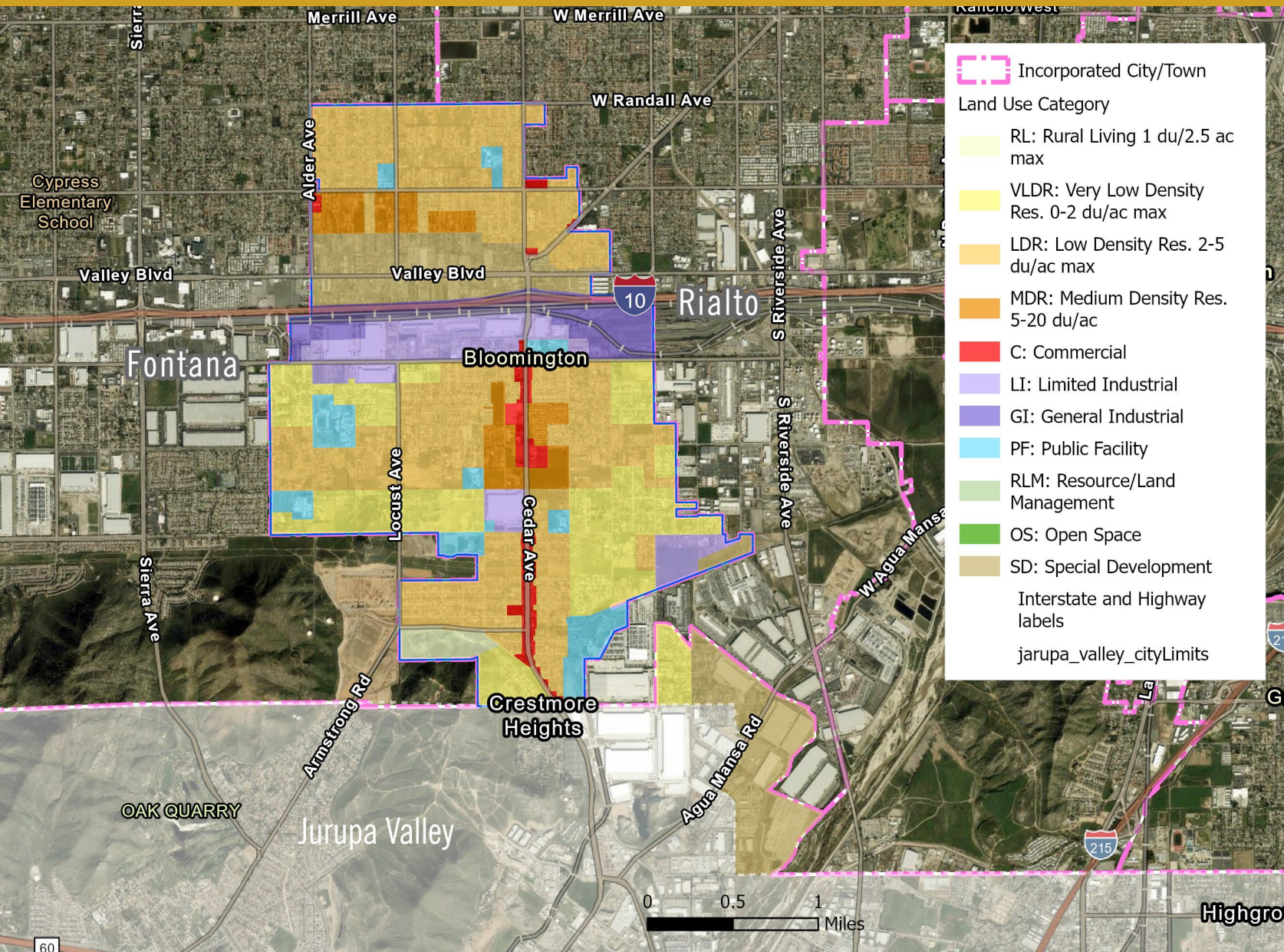


No new truck routes are needed in unincorporated areas at this time in the following regions:

- Mountain
- East Desert
- North Desert

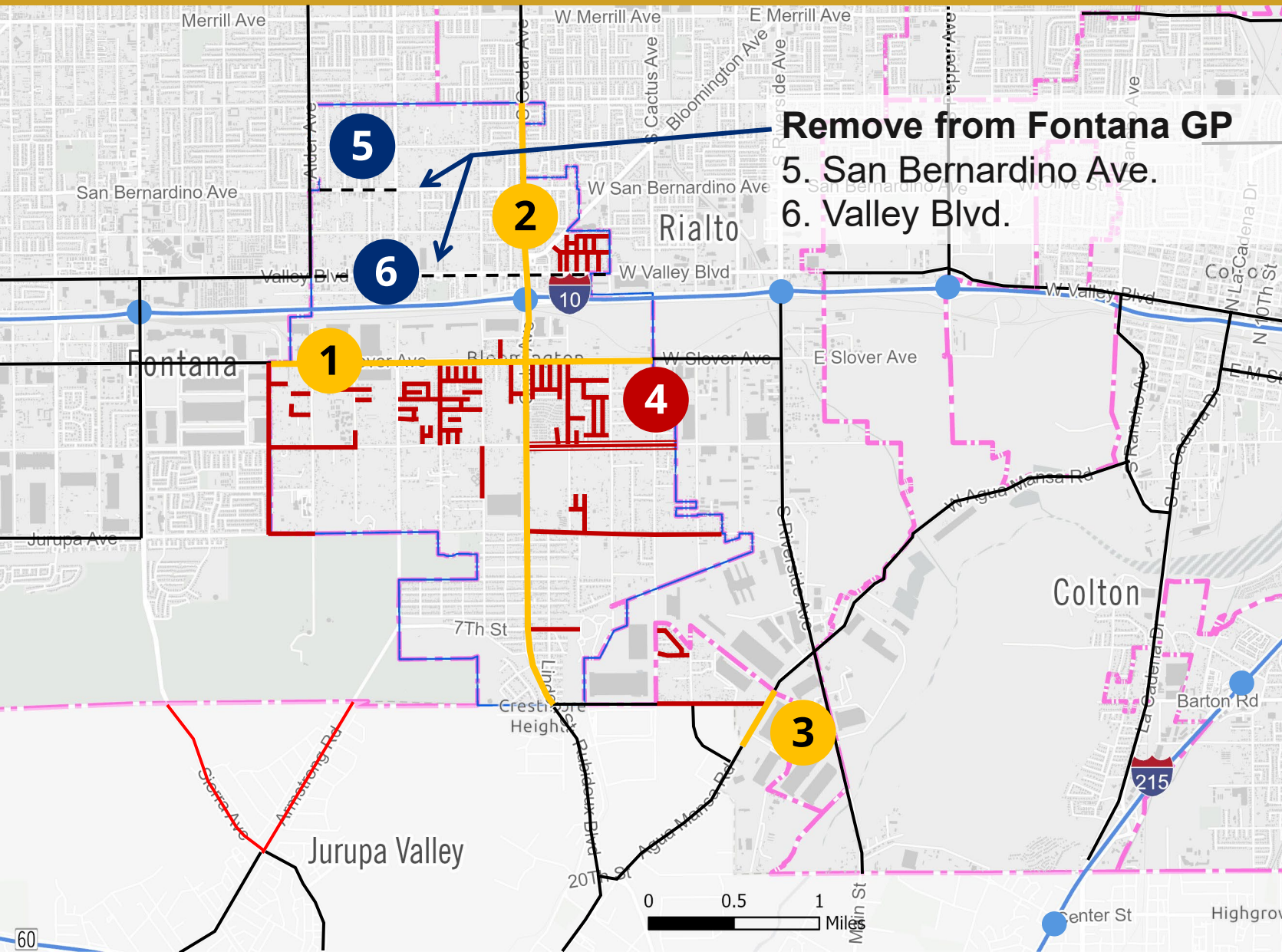


Potential Updates in Bloomington



- Surrounded by the cities of Fontana and Rialto
- Large residential community with commercial corridors and clusters of industrial development
- Adjacent to industrial development in Fontana and Rialto.

Potential Updates in Bloomington



- State/Federal - Existing
- City - Existing
- City - Existing but Unincorporated
- City - Potential Future
- City - Existing Weight-Restricted
- County - Existing Weight-restricted
- County - Proposed
- County - Proposed Weight-restricted

Routes aligned w/other GPs

1. Slover Ave.
2. Cedar Ave.
3. Agua Mansa Rd.

New weight-restricted route

4. Santa Ana Ave.
(Cedar Ave. to eastern boundary)



JOIN THE LAND USE SERVICES DEPARTMENT FOR A COMMUNITY OPEN HOUSE

Are you planning a new construction project, considering a renovation, or simply curious about land use regulations? Join us for an Open House!

Building & Safety: Learn how to obtain permits, meet safety regulations, and navigate inspections with guidance from our experts.

Planning Services: Discover how we can assist with zoning, land use applications, and community development to bring your vision to life.

Code Enforcement: Understand the role of code enforcement in maintaining community standards and safety, from handling complaints to ensuring compliance.

Land Development: Gain insights into drainage, grading plans, and road and drainage improvements for new developments.

NEW
Learn about manufactured housing & AB98 updates!


Open House Dates & Locations

JUNE 11TH 5:00PM - 7:00PM Fontana Lewis Library 8437 Sierra Ave, Fontana, CA 92335	JUNE 25TH 5:00PM - 7:00PM Government Center 63665 29 Palms Hwy Joshua Tree, CA 92252
JULY 9TH 5:00PM - 7:00PM County Office 26010 State Hwy 189 Twin Peaks, CA 92391	JULY 23RD 5:00PM - 7:00PM Big Bear Library 41930 Garstin Dr, Big Bear Lake, CA 92315
AUGUST 6TH 5:00PM - 7:00PM Ovitt Family Library 215 E C St, Ontario, CA 91764	AUGUST 20TH 5:00PM - 7:00PM Ayala Park 17909 Marygold Ave, Bloomington, CA 92316
SEPTEMBER 24TH 5:00PM - 7:00PM Apple Valley Center 13467 Navajo Rd, Apple Valley, CA 92308	 SCAN HERE to Register!

CONTACT US FOR MORE INFORMATION
(909) 387-8311
lus.sbcounty.gov

Registration is not required to attend the events.






JOIN THE LAND USE SERVICES DEPARTMENT FOR COMMUNITY OUTREACH ON AB 98 TRUCK ROUTES

The County of San Bernardino invites you to join us for presentations and discussions about proposed AB 98 compliant truck routes.

Why Attend?

- Learn about existing truck routes, traffic levels, and next steps.
- Provide input to help shape decisions.

Community Outreach Events Dates & Locations






OCTOBER 1ST 6:00PM Bloomington Municipal Advisory Council Ayala Park Community Center 17909 Marygold Ave, Bloomington, CA 92316	OCTOBER 7TH TBD Virtual Countywide Outreach Teams Meeting, Link to be provided
OCTOBER 9TH 9:00AM Planning Commission Study Session Covington Chambers 385 N. Arrowhead Avenue, 1st Floor San Bernardino, CA 92415	OCTOBER 16TH 6:00PM Muscoy Community Steering Committee Covington Chambers 385 N. Arrowhead Avenue, 1st Floor San Bernardino, CA 92415
OCTOBER 23RD 9:00AM Planning Commission Meeting Covington Chambers 385 N. Arrowhead Avenue, 1st Floor San Bernardino, CA 92415	OCTOBER 25TH 9:00AM 2nd Annual AB 617 Community Engagement Event SCAQMD 21865 Copley Dr. Diamond Bar, CA 91765
DECEMBER 16TH 10:00AM Board of Supervisor's Hearing Covington Chambers 385 N. Arrowhead Avenue, 1st Floor San Bernardino, CA 92415	 SCAN HERE for more information!

Your Voice Matters!

Send Discussion Items/Comments to:
Lauren Miracle, Planner
Lauren.Miracle@lus.sbcounty.gov
Vincent Acuna, Planning Manager
Vincent.Acuna@lus.sbcounty.gov

Meeting information subject to change. Check the County website or contact us for updates.
(909) 387 - 8311
lus.sbcounty.gov

We look forward to your participation!



Countywide

- Regional Open Houses
- PC Study Session
- Virtual Open House (bilingual)
- SCAQMD AB 617 Event

Targeted Communities

- Bloomington & Muscoy

Adoption Hearings

- October 23 (PC) & December (BOS)

Websites

- [AB 98 Truck Routes](#)
- [AB 98 Logistics Facilities](#)

Addendum to the Countywide Plan Environmental Impact Report (2020)

- Update and addition of new routes/weight-restricted routes:
 - Align with existing city truck routes
 - Align with existing truck activity
 - Reduce impacts on sensitive receptors
- Not expected to create any new significant impacts
- Will present analysis and conclusions as part of adoption hearings

For tonight

- Discussion and questions

Next steps

- Continue public engagement
- Virtual Outreach Meeting October 7th
- <https://lus.sbcounty.gov/ab-98-truck-routes-in-unincorporated-san-bernardino-county/>

Send your questions and/or comments to:

- Lauren Miracle, Planner lauren.miracle@lus.sbcounty.gov
- Vincent Acuna, Planning Manager Vincent.acuna@lus.sbcounty.gov

Thank you!

